

MEDINA, OHIO

AL-5763 (FAA)

22363

APP CRS	Rwy Idg	3556
271°	TDZE	1183
	Apt Elev	1190

RNAV (GPS) RWY 27

MEDINA MUNI (1G5)

RNP APCH.

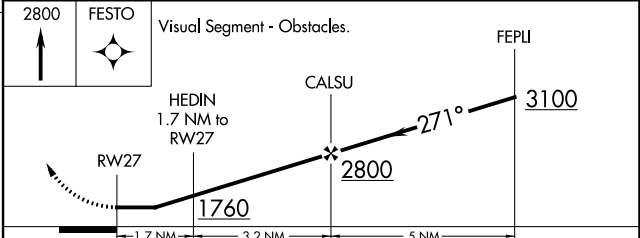
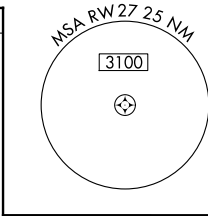
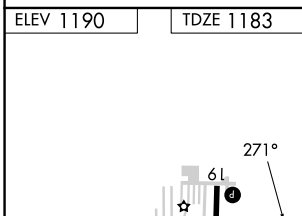
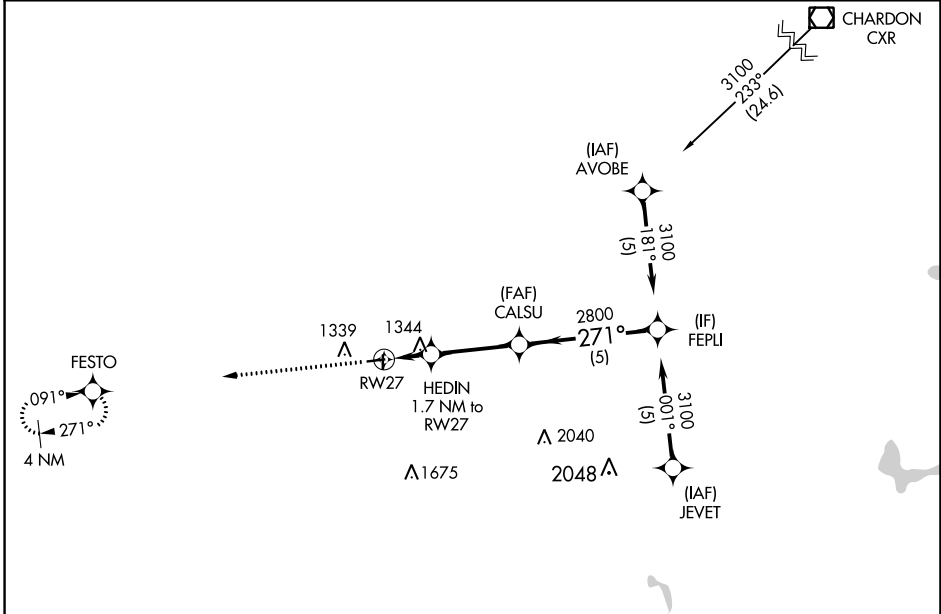
NA Rwy 27 helicopter visibility reduction below 3/4 SM NA. Use Cleveland-Hopkins Intl altimeter setting.

MISSED APPROACH: Climb to 2800 direct FESTO and hold.

CLE ASOS
127.85

CLEVELAND APP CON
125.35 346.325

UNICOM
123.0 (CTAF) 0



CATEGORY	A	B	C	D
LNVA MDA	1700-1	517 (600-1)	1700-1 3/8 517 (600-1 3/8)	NA

MEDINA, OHIO
Orig-C 07NOV19

41°08'N-81°46'W

RNAV (GPS) RWY 27

EC-2, 28 NOV 2024 to 26 DEC 2024

EC-2, 28 NOV 2024 to 26 DEC 2024