

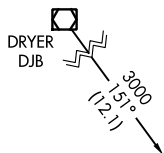
APP CRS	Rwy Idg	3556
091°	TDZE	1179
	Apt Elev	1190

RNAV (GPS) RWY 9

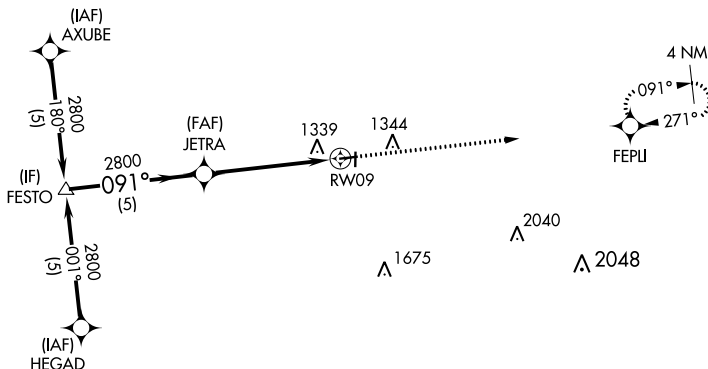
MEDINA MUNI (1G5)

RNP APCH.	<p>Procedure NA at night. Rwy 9 helicopter visibility reduction below 1 SM NA. Use Cleveland-Hopkins Intl altimeter setting.</p>	MISSED APPROACH: Climb to 2800 direct FEPLI and hold.
-----------	--	---

CLE ASOS 127.85	CLEVELAND APP CON 125.35 346.325	UNICOM 123.0 (CTAF) 0
---------------------------	--	---------------------------------

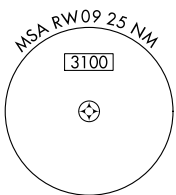


Procedure NA for arrival on DJB VOR/DME airway radials 074 CW 219.



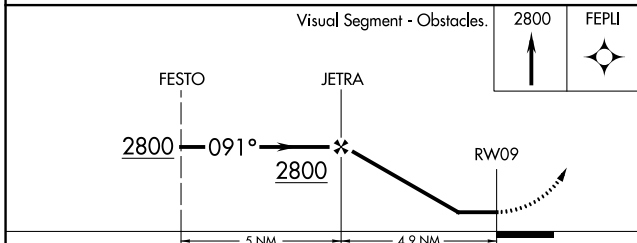
EC-2, 28 NOV 2024 to 26 DEC 2024

EC-2, 28 NOV 2024 to 26 DEC 2024



ELEV 1190	TDZE 1179
-----------	-----------

REIL Rwy 27 0
MIRL Rwy 9-27 and 1-19 0



CATEGORY	A	B	C	D
LNNAV MDA	1700-1	521 (600-1)	1700-1½ 521 (600-1½)	NA