

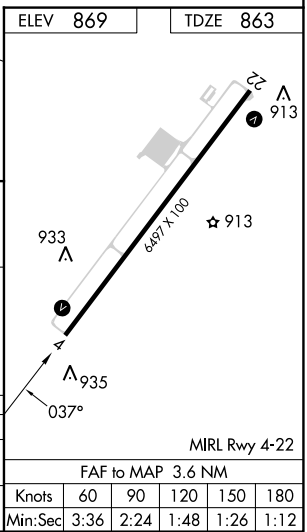
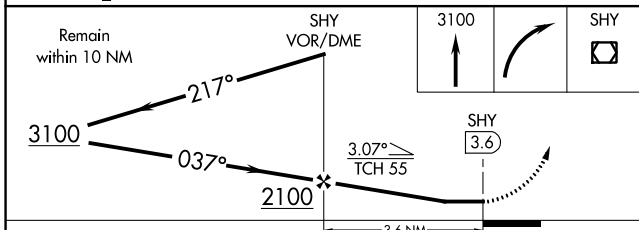
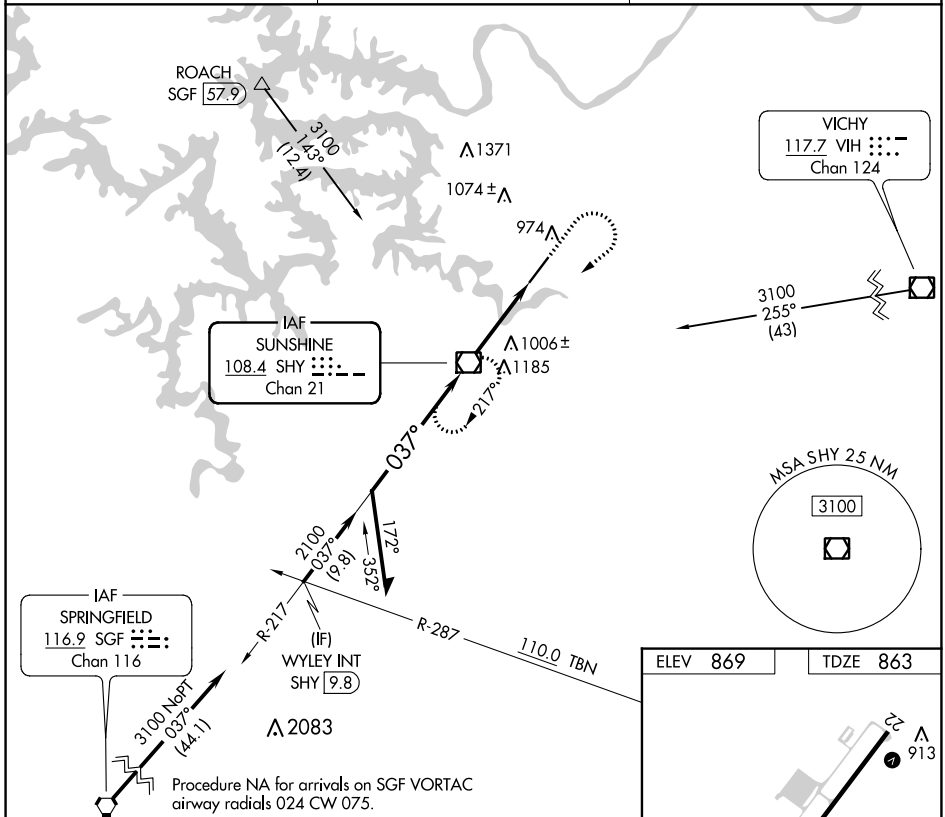
VOR/DME SHY 108.4 Chan 21	APP CRS 037°	Rwy Idg 6497 TDZE 863 Apt Elev 869
--	------------------------	---

VOR RWY 4
LEE C FINE MEML (AIZ)

⚠ Straight-in minimums NA at night. Helicopter visibility reduction below 1 SM NA. When local altimeter setting not received, use Camden ton altimeter setting and increase all MDAs 60 feet and S-4 Cat C and Circling Cat C visibility ¼ SM.

⚠ MISSED APPROACH: Climb to 3100 then right turn direct SHY VOR/DME and hold.

AWOS-3PT 135.325	MIZZU APP CON 124.1 353.925	UNICOM 122.8 (CTAF) 0
----------------------------	---------------------------------------	---------------------------------



CATEGORY	A	B	C	D
S-4	1260-1	397 (400-1)	1260-1½ 397 (400-1½)	NA
CIRCLING	1320-1 451 (500-1)	1380-1 511 (600-1)	1440-1½ 571 (600-1½)	NA

NC-3, 28 NOV 2024 to 26 DEC 2024

NC-3, 28 NOV 2024 to 26 DEC 2024