

WAAS CH <b>93828</b> <b>W09A</b>	APP CRS <b>094°</b>	Rwy Idg TDZE <b>779</b> Apt Elev <b>781</b>
--	------------------------	---

# RNAV (GPS) RWY 9

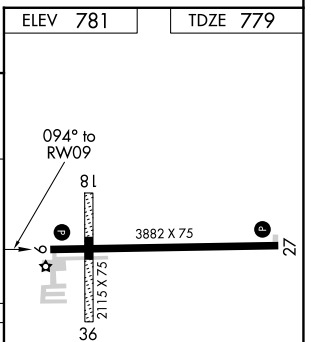
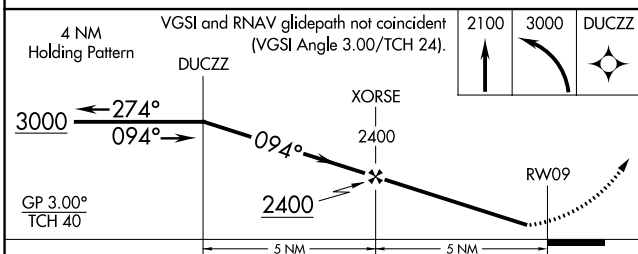
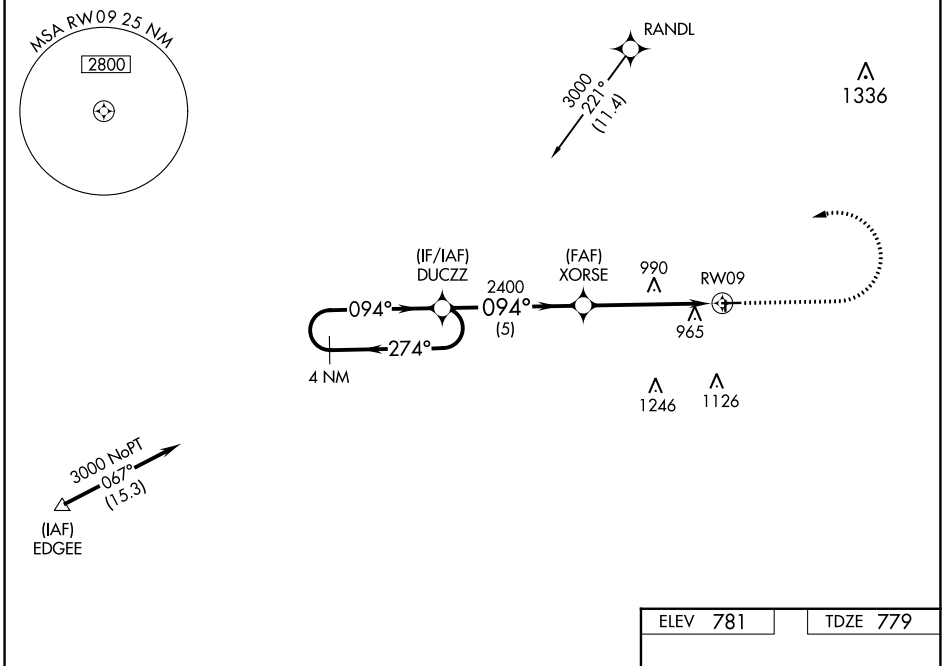
FULTON COUNTY (USE)

RNP APCH - GPS.

▼ For uncompensated Baro-VNAV systems, LNAV/VNAV NA below -16°C or above 54°C. Circling NA to Rwys 18 and 36. Rwy 9 helicopter visibility reduction below 1 SM NA. Procedure NA at night.

MISSED APPROACH: Climb to 2100 then climbing left turn to 3000 direct DUCZZ and hold.

AWOS-3P <b>127.375</b>	TOLEDO APP CON <b>134.35 317.55</b>	UNICOM <b>123.0 (CTAF) 0</b>
---------------------------	--	---------------------------------



CATEGORY	A	B	C	D
LPV DA	1109-1		330 (400-1)	
LNAV/VNAV DA	1198-1½		419 (500-1½)	
LNAV MDA	1300-1	521 (600-1)	1300-1½	521 (600-1½)
CIRCLING	1320-1	539 (600-1)	1480-2 699 (700-2)	1480-2¼ 699 (700-2¼)

REIL Rwys 9 and 27 0  
MIRL Rwy 9-27 0

EC-2, 28 NOV 2024 to 26 DEC 2024

EC-2, 28 NOV 2024 to 26 DEC 2024