

WAAS CH 70320 W23A	APP CRS 227°	Rwy ldg TDZE 133 Apt Elev 133	5501
--	------------------------	---	-------------

RNAV (GPS) RWY 23

WAYNE EXEC JETPORT (GWW)

RNP APCH

▼ Baro-VNAV NA when using Smithfield altimeter setting. For uncompensated Baro-VNAV systems, LNAV/VNAV NA below -15°C (5°F) or above 43°C (109°F). VDP NA with Smithfield altimeter setting. When local altimeter setting not received, use Smithfield altimeter setting and increase LPV DA to 387 feet, LNAV/VNAV DA to 499 feet and all MDA 60 feet, increase LNAV/VNAV all Cats and LNAV Cats C/D visibilities ½ SM, and Circling Cat C/D ¼ SM. For inop ALS when using Smithfield altimeter setting, increase LNAV/VNAV visibility all Cats to 1 SM and LNAV visibility Cats A/B to 1 SM and Cats C/D to 1½ SM.

ODALS

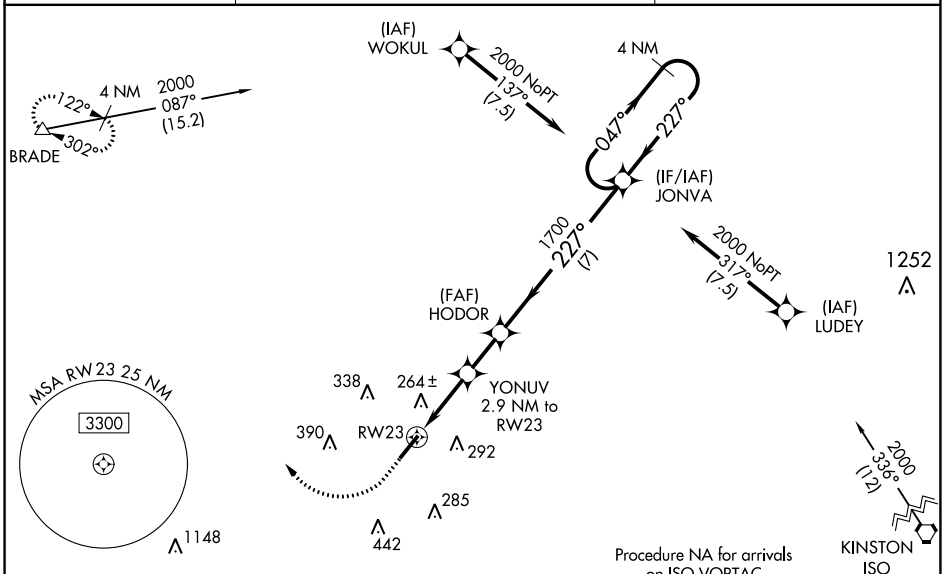


MISSED APPROACH:
Climb to 600 then climbing right turn to 2000 direct BRADE and hold.

AWOS-3P
118.975

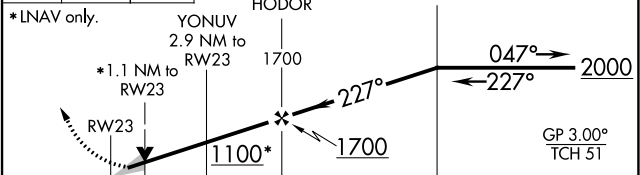
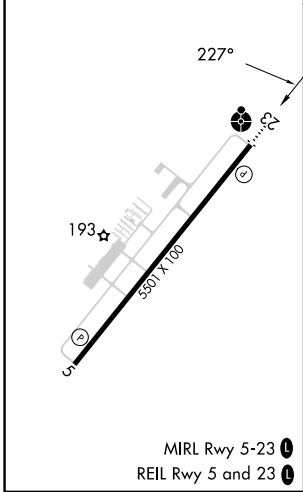
SEYMOUR JOHNSON APP CON ★
121.175 290.9

UNICOM
122.975 (CTAF) 0



ELEV 133	TDZE 133
----------	----------

600 2000 BRADE VGSI and RNAV glidepath not coincident (VGSI Angle 3.00/TCH 44). 4 NM Holding Pattern



CATEGORY	A	B	C	D
LPV DA		333-3/4	200 (200-3/4)	
LNAV/VNAV DA		445-7/8	312 (400-7/8)	
LNAV MDA	520-3/4	387 (400-3/4)	520-1	387 (400-1)
CIRCLING	580-1 447 (500-1)	640-1 507 (600-1)	760-1 3/4 627 (700-1 3/4)	760-2 627 (700-2)

SE-2, 28 NOV 2024 to 26 DEC 2024

SE-2, 28 NOV 2024 to 26 DEC 2024