

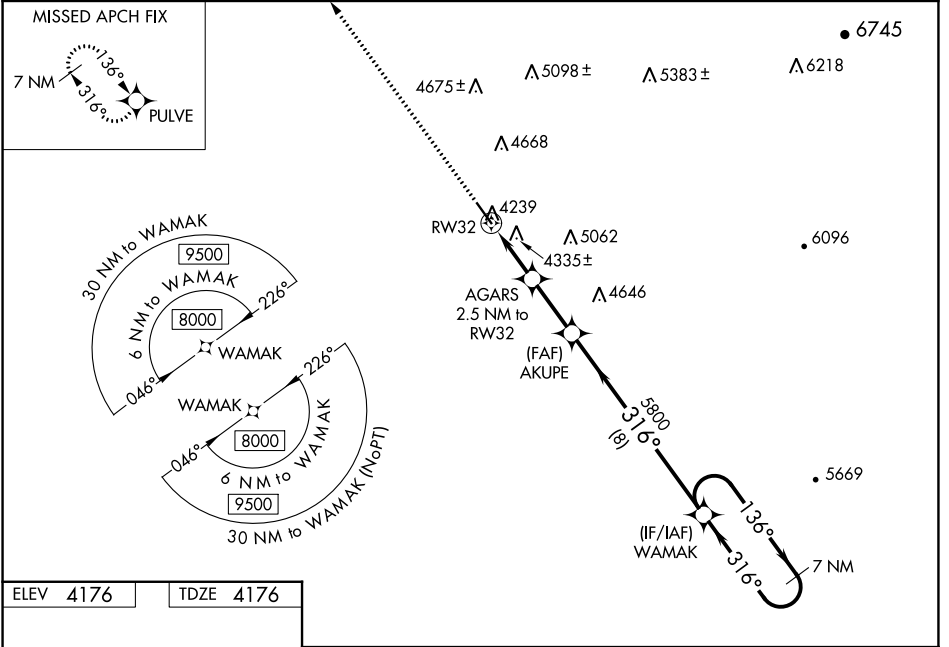
WAAS CH <b>61225</b> <b>W32A</b>	APP CRS <b>316°</b>	Rwy ldg TDZE Apt Elev	<b>5310</b> <b>4176</b> <b>4176</b>
--	------------------------	-----------------------------	---

# RNAV (GPS) RWY 32

MONDELL FLD (ECS)

RNP APCH.	ODALS	MISSED APPROACH: Climb to 9500 direct PULVE and hold, continue climb-in-hold to 9500.
<p>⚠ When Newcastle altimeter setting not received, procedure NA. For uncompensated Baro-VNAV systems, LNAV/VNAV NA below -23°C (-9°F) or above 53°C (128°F). Circling NA northeast of Rwy 14-32. For inop ODAL, increase LNAV/VNAV visibility all Cats and LNAV Cats C/D ½ mile. Inop table does not apply to LPV all Cats and LNAV Cats A/B.</p>		

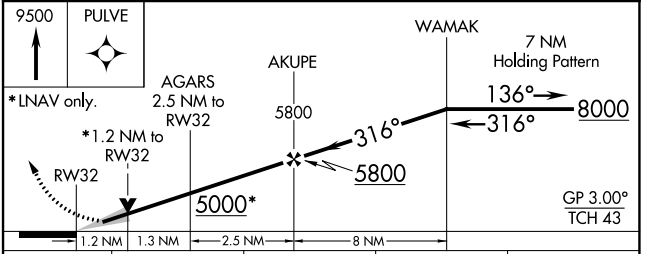
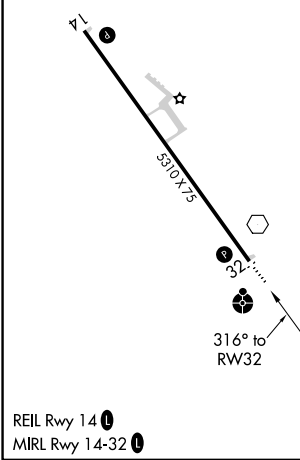
AWOS-3PT <b>118.0</b>	DENVER CENTER <b>127.95 338.2</b>	UNICOM <b>122.8</b> (CTAF) <b>1</b>
--------------------------	--------------------------------------	--



NW-1, 28 NOV 2024 to 26 DEC 2024

NW-1, 28 NOV 2024 to 26 DEC 2024

ELEV <b>4176</b>	TDZE <b>4176</b>
------------------	------------------



CATEGORY	A	B	C	D
LPV DA	4385-1 209 (300-1)			
LNAV/VNAV DA	4618-1 3/8 442 (500-1 3/8)			
LNAV MDA	4600-1	424 (500-1)	4600-1 1/8	424 (500-1 1/8)
<b>C</b> CIRCLING	4700-1	524 (600-1)	4720-1 1/2 544 (600-1 1/2)	5000-2 3/4 824 (900-2 3/4)