

WAAS CH <b>69203</b> <b>W24A</b>	APP CRS <b>238°</b>	Rwy Idg TDZE Apt Elev	<b>6500</b> <b>66</b> <b>67</b>
--	------------------------	-----------------------------	---------------------------------------

# RNAV (GPS) Z RWY 24

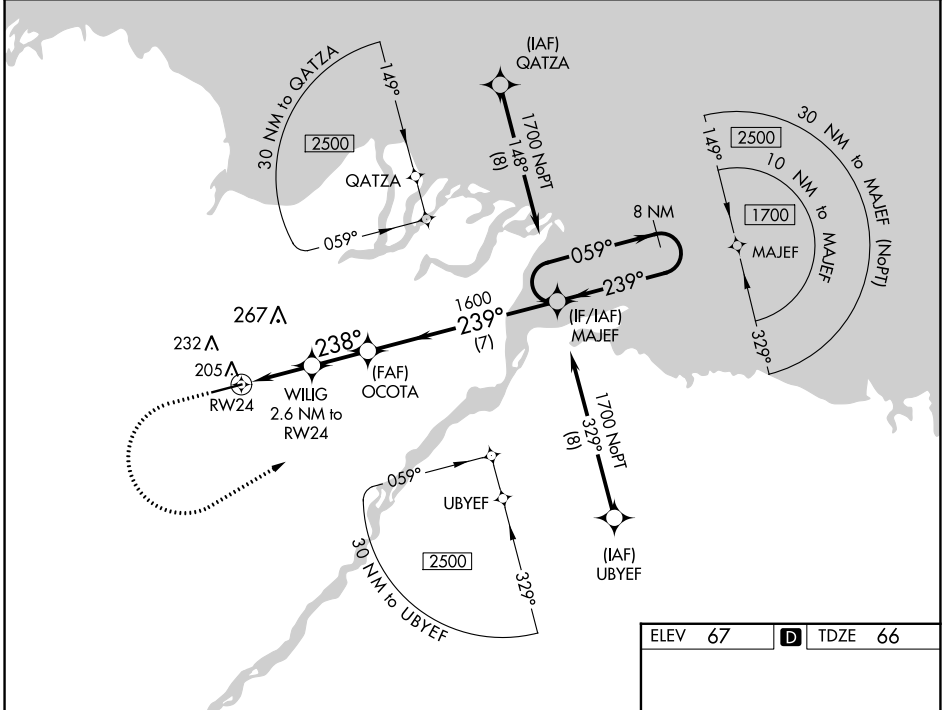
DEADHORSE (SCC) (PASC)

**▼** For uncompensated Baro-VNAV systems, LNAV/VNAV NA below -17°C (2°F) or above 54°C (130°F). DME/DME RNP-0.3 NA.  
For inop ALS, increase LPV Cat E visibility to RVR 4000, LNAV/VNAV all Cats visibility to RVR 5000, and LNAV Cat E visibility to RVR 6000.  
# RVR 1800 authorized with use of FD or AP or HUD to DA.



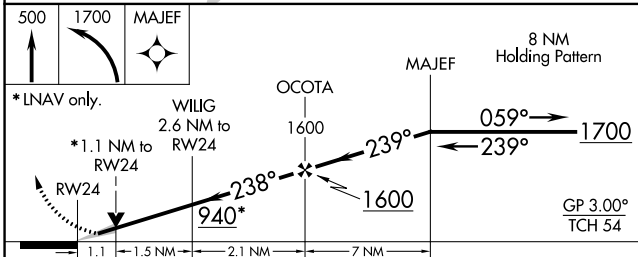
**MISSED APPROACH:** Climb to 500 then climbing left turn to 1700 direct MAJEF and hold.

AFIS <b>118.4</b>	ANCHORAGE CENTER <b>134.4 370.9</b>	DEADHORSE RADIO <b>123.6 (CTAF) 0</b>
----------------------	--	--

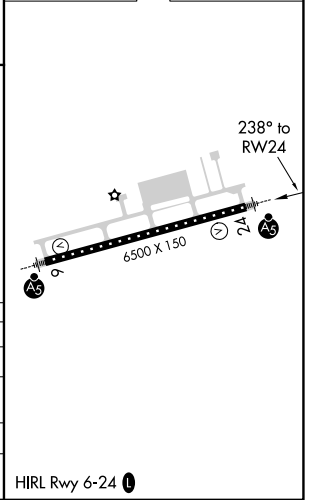


AK, 31 OCT 2024 to 26 DEC 2024

AK, 31 OCT 2024 to 26 DEC 2024



ELEV 67	<b>D</b> TDZE 66
---------	------------------



CATEGORY	A	B	C	D	E
LPV DA#	266/24		200 (200-½)		
LNAV/VNAV DA	381/30		315 (400-¾)		
LNAV MDA	460/24 394 (400-½)		460/35 394 (400-¾)		
<b>C</b> CIRCLING	540-1 473 (500-1)		580-1½ 513 (600-1½) 620-2 553 (600-2)		

HIRL Rwy 6-24 **0**