

DEADHORSE, ALASKA

AL-5776 (FAA)

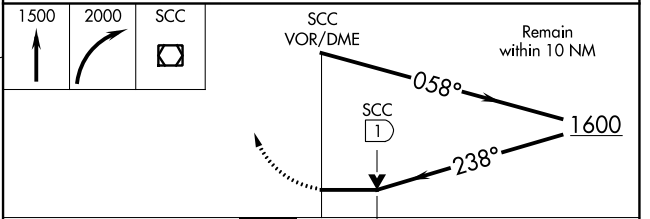
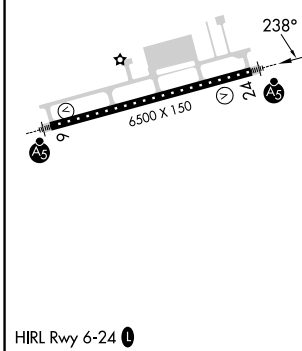
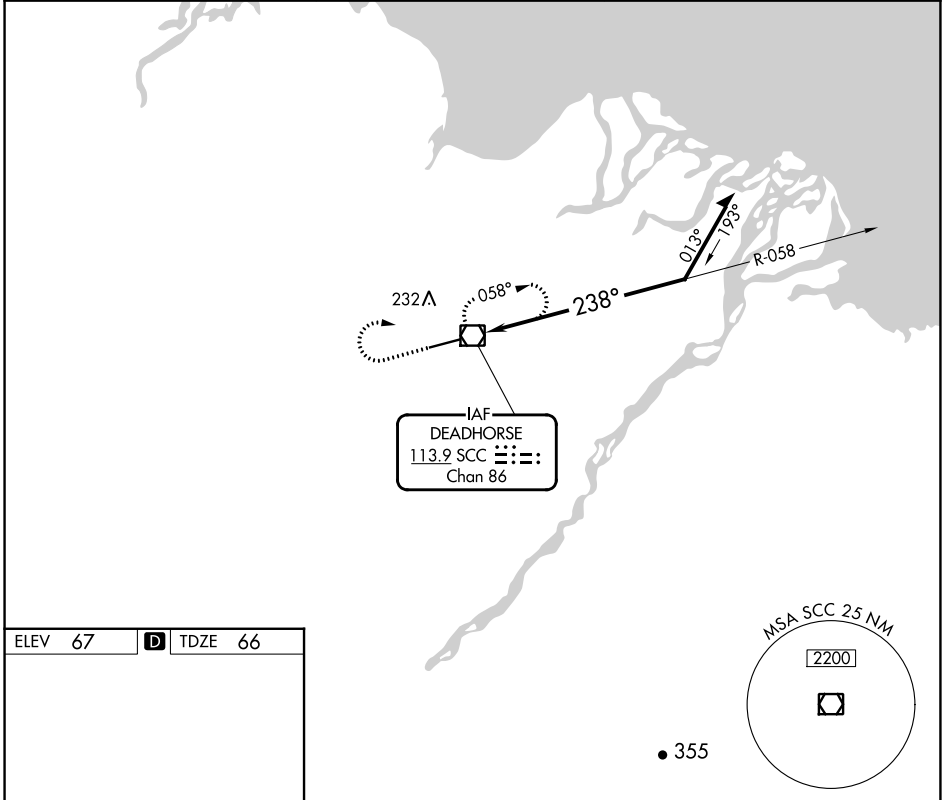
24081

| | | | |
|----------------|-------------|----------|------|
| VOR/DME SCC | APP CRS | Rwy Idg | 6500 |
| 113.9 | 238° | TDZE | 66 |
| Chan 86 | | Apt Elev | 67 |

VOR Y RWY 24

DEADHORSE (SCC) (PASC)

| | | |
|----------------------|--|--|
| | MALSR | MISSED APPROACH: Climb to 1500 then climbing right turn to 2000 direct SCC VOR/DME and hold, continue climb-in-hold to 2000. |
| | | |
| AFIS 118.4 | ANCHORAGE CENTER 134.4 370.9 | DEADHORSE RADIO 123.6 (CTAF) |



| CATEGORY | A | B | C | D |
|-------------------|--------|-------------|------------------------|----------------------|
| S-24 | 580/24 | 514 (600-½) | 580/55 | 514 (600-1) |
| C CIRCLING | 580-1 | 513 (600-1) | 580-1½ 513 (600-1½) | 620-2 553 (600-2) |

DEADHORSE, ALASKA
Amdt 6B 12OCT17

70°12'N-148°28'W

DEADHORSE (SCC) (PASC)

VOR Y RWY 24

AK, 31 OCT 2024 to 26 DEC 2024

AK, 31 OCT 2024 to 26 DEC 2024