

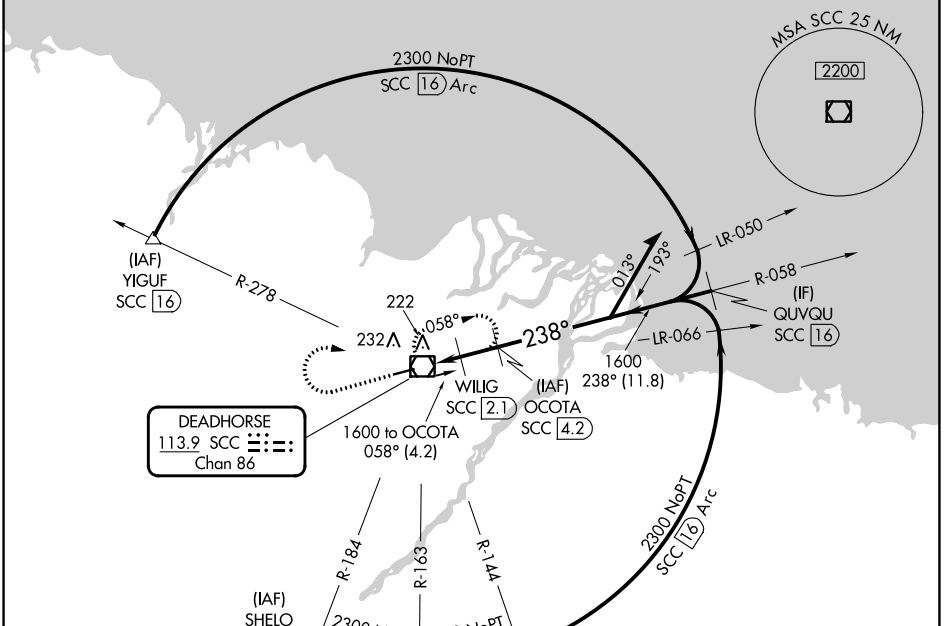
VOR/DME SCC <b>113.9</b> Chan <b>86</b>	APP CRS <b>238°</b>	Rwy Idg TDZE <b>66</b> Apt Elev <b>67</b>
---	------------------------	---

# VOR Z RWY 24

DEADHORSE (SCC) (PASC)

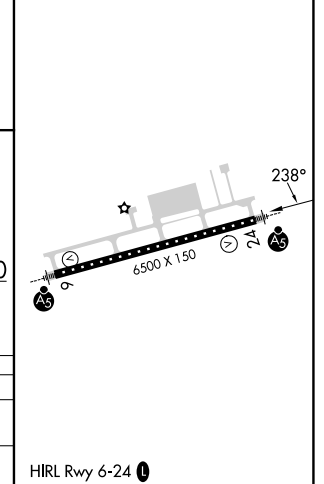
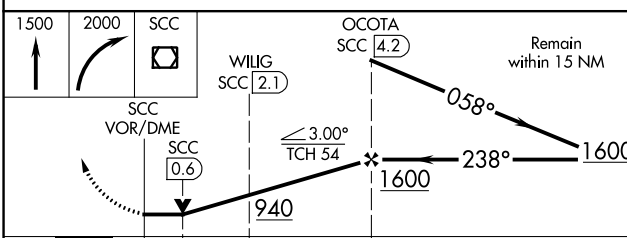
<p>DME required. For inop ALS, increase Cats C/D/E visibility to RVR 6000.</p>	<p>MALSR</p>	<p>MISSED APPROACH: Climb to 1500 then climbing right turn to 2000 direct SCC VOR/DME and hold, continue climb-in-hold to 2000.</p>
--	--------------	---

AFIS <b>118.4</b>	ANCHORAGE CENTER <b>134.4 370.9</b>	DEADHORSE RADIO <b>123.6 (CTAF) 0</b>
----------------------	--	--



**DME REQUIRED**

ELEV 67	<b>D</b> TDZE 66
---------	------------------



CATEGORY	A	B	C	D	E
S-24	480/24 414 (500-1/2)		480/40 414 (500-3/4)		
<b>C</b> CIRCLING	540-1 473 (500-1)		580-1 1/2 513 (600-1 1/2)	620-2 553 (600-2)	

AK, 31 OCT 2024 to 26 DEC 2024

AK, 31 OCT 2024 to 26 DEC 2024