

VOR/DME VIO 115.95 Chan 106 (Y)	APP CRS 142°	Rwy Idg 4763 TDZE 800 Apt Elev 800
---	------------------------	---

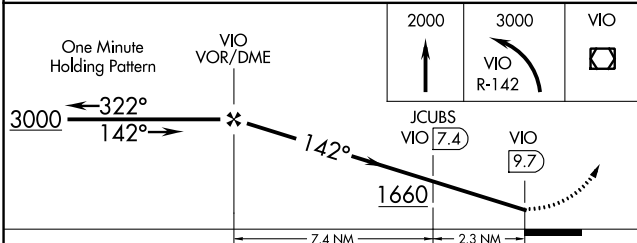
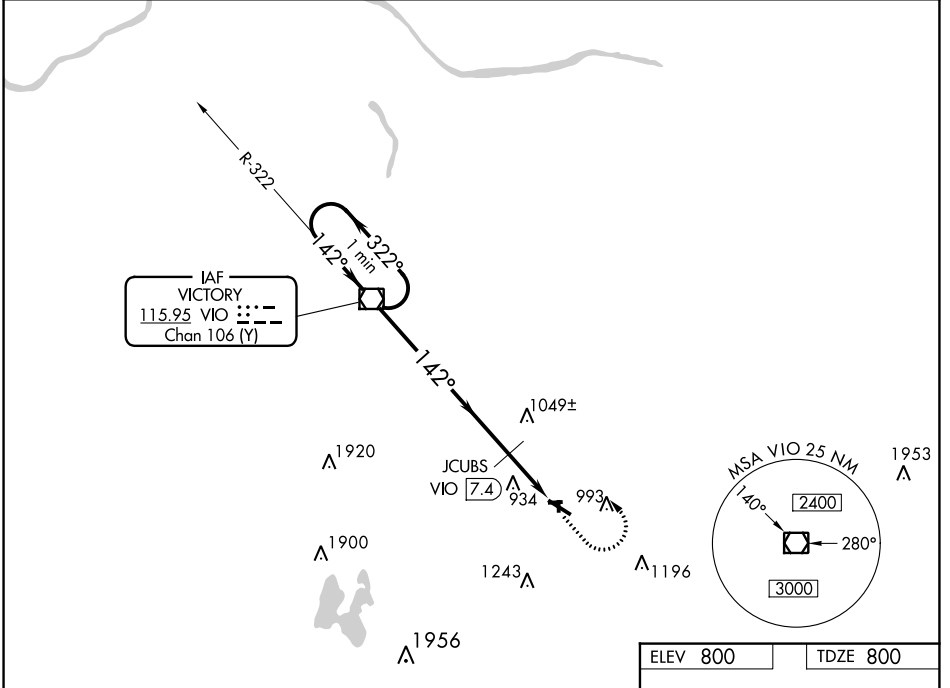
VOR RWY 12

HASTINGS (9D9)

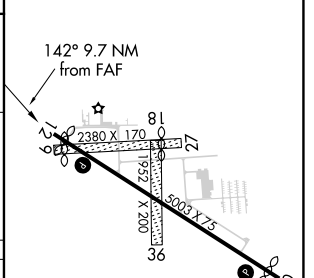
▼ Helicopter visibility reduction below 3/4 SM NA. Use Grand Rapids altimeter setting; when not received, use Ionia altimeter setting and increase all MDA 20 feet. Increase JCUBS DME minimums S-12 Cat C visibility 1/8 mile. Circling NA to Rwy 9, 18, 27, 36.

▲ NA MISSED APPROACH: Climb to 2000, then climbing left turn to 3000 on VIO VOR/DME R-142 to VIO VOR/DME and hold.

GRR ASOS 118.725	GREAT LAKES APP CON * 128.4 257.6	UNICOM 123.075 (CTAF) 0
----------------------------	---	-----------------------------------



ELEV 800	TDZE 800
----------	----------



CATEGORY	A	B	C	D
S-12	1660-1 860 (900-1)	1660-1¼ 860 (900-1¼)	1660-2½ 860 (900-2½)	NA
C CIRCLING	1660-1 860 (900-1)	1660-1¼ 860 (900-1¼)	1660-2½ 860 (900-2½)	NA
JCUBS DME MINIMUMS				
S-12	1340-1	540 (600-1)	1340-1½ 540 (600-1½)	NA
C CIRCLING	1380-1 580 (600-1)	1420-1 620 (700-1)	1440-1¾ 640 (700-1¾)	NA

MIRL Rwy 12-30 0					
REIL Rwys 12 and 30 0					
FAF to MAP 9.7 NM					
Knots	60	90	120	150	180
Min:Sec	9:42	6:28	4:51	3:53	3:14

EC-1, 28 NOV 2024 to 26 DEC 2024

EC-1, 28 NOV 2024 to 26 DEC 2024