

WAAS CH 86819 W15A	APP CRS 152°	Rwy Idg TDZE Apt Elev	4001 730 730
---------------------------------	------------------------	-----------------------------	---

RNAV (GPS) RWY 15

MOUNT PLEASANT MUNI (MPZ)

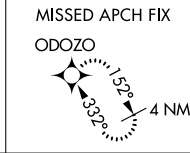
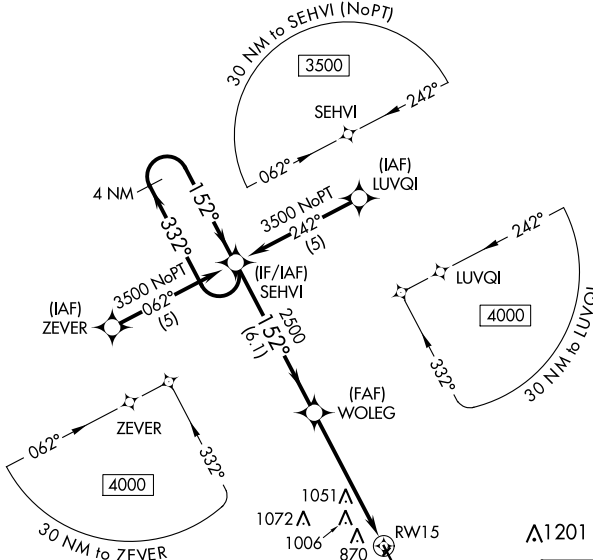
⚠ Baro-VNAV NA when using Burlington altimeter setting. For uncompensated Baro-VNAV systems, LNAV/VNAV NA below -1.6°C (4°F) or above 54°C (130°F). DME/DME RNP-0.3 NA. Visibility reduction by helicopters NA. When VGSJ inoperative, straight-in minimums NA at night. When local altimeter setting not received, use Burlington altimeter setting: increase LPV DA to 1031 feet, LNAV/VNAV DA to 1394 feet and all LNAV/VNAV visibilities ¼ mile; increase all MDA 60 feet, increase LNAV and Circling Cat C visibility ¼ mile. Circling NA to Rwy 3/21.

MISSED APPROACH:
Climb to 3500 direct ODOZO and hold.

AWOS-3
119.325

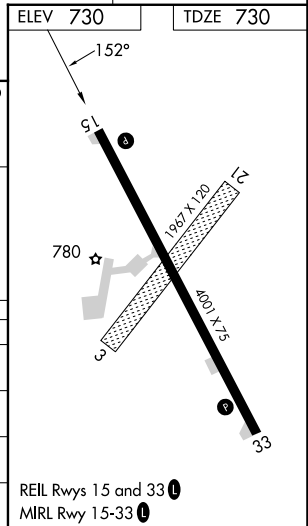
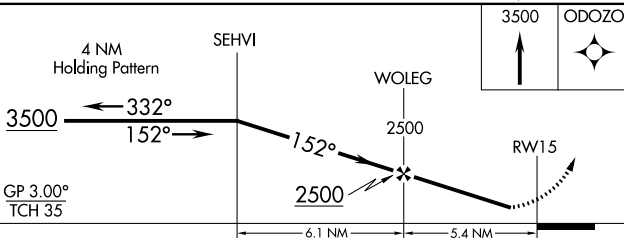
CHICAGO CENTER
135.6 316.1

UNICOM
123.05 (CTAF) 0



⚠ 1201

ELEV 730	TDZE 730
----------	----------



CATEGORY	A	B	C	D
LPV DA	980-1 250 (300-1)			NA
LNAV/VNAV DA	1343-2¼ 613 (700-2¼)			NA
LNAV MDA	1360-1 630 (700-1)	1360-1¾ 630 (700-1¾)		NA
CIRCLING	1360-1 630 (700-1)	1420-2 690 (700-2)		NA

REIL Rwy 15 and 33 **0**
MRL Rwy 15-33 **0**