

|  |                        |   |
|--|------------------------|---|
| WAAS<br>CH <b>99738</b><br><b>W19A</b> | APP CRS<br><b>187°</b> | Rwy Idg <b>4902</b><br>TDZE <b>1600</b><br>Apt Elev <b>1600</b> |
|--|------------------------|---|

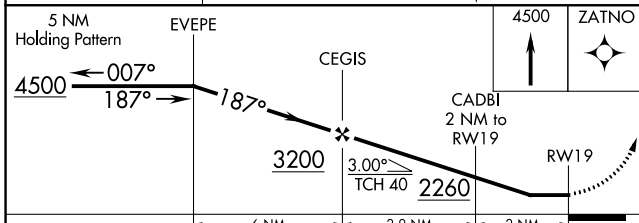
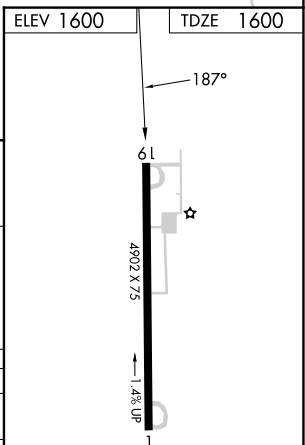
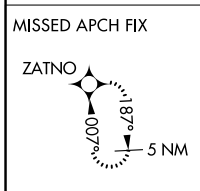
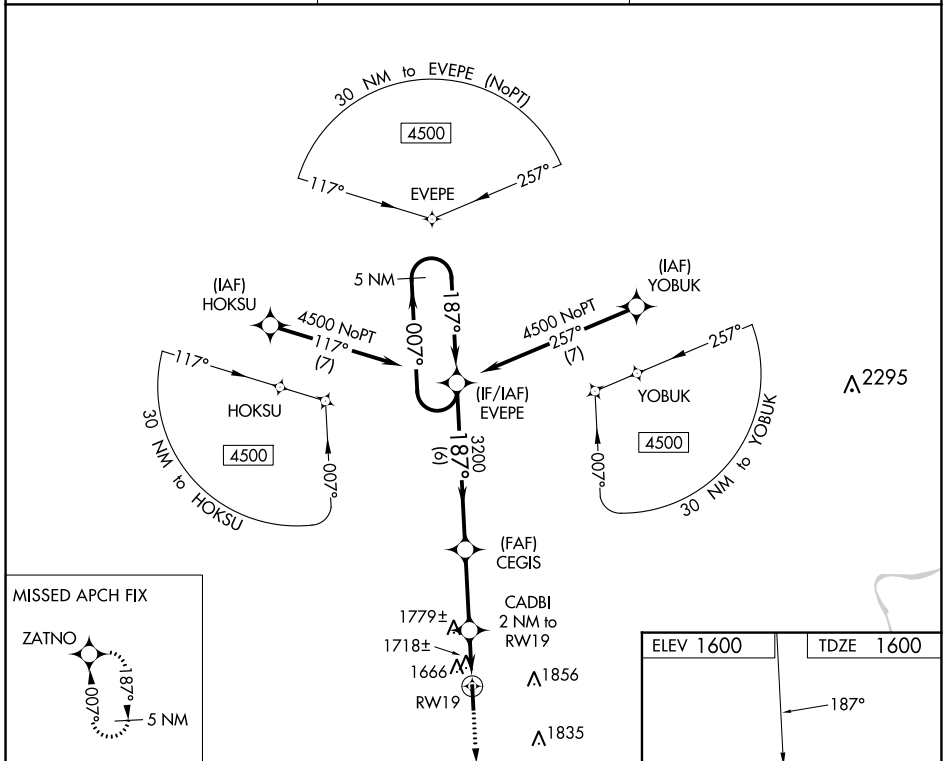
# RNAV (GPS) RWY 19

TITUSVILLE (6G1)

**NA** DME/DME RNP-0.3 NA. Helicopter visibility reduction below ¾ SM NA. Use Franklin altimeter setting. When not received, use Port Meade altimeter setting and increase all MDA 40 feet; increase LP Cats C/D and Circling Cat C visibility ¼ mile. Night landing: Rwy 1 NA.

**MISSED APPROACH:** Climb to 4500 direct ZATNO and hold.

|                                |   |                      |
|--------------------------------|---|----------------------|
| FKL AWOS-3PT<br><b>118.175</b> | YOUNGSTOWN APP CON ★<br><b>133.95 322.3</b> | CTAF<br><b>122.9</b> |
|--------------------------------|---|----------------------|



| CATEGORY          | A                  | B | C                    | D                    |
|-------------------|--------------------|---|----------------------|----------------------|
| LP MDA            | 2020-1 420 (500-1) |   | 2020-1½ 420 (500-1½) |                      |
| LNAV MDA          | 2080-1 480 (500-1) |   | 2080-1¾ 480 (500-1¾) |                      |
| <b>C</b> CIRCLING | 2100-1 500 (500-1) |   | 2200-1½ 600 (600-1½) | 2280-2¼ 680 (700-2¼) |

MRL Rwy 1-19

NE-4, 28 NOV 2024 to 26 DEC 2024

NE-4, 28 NOV 2024 to 26 DEC 2024