

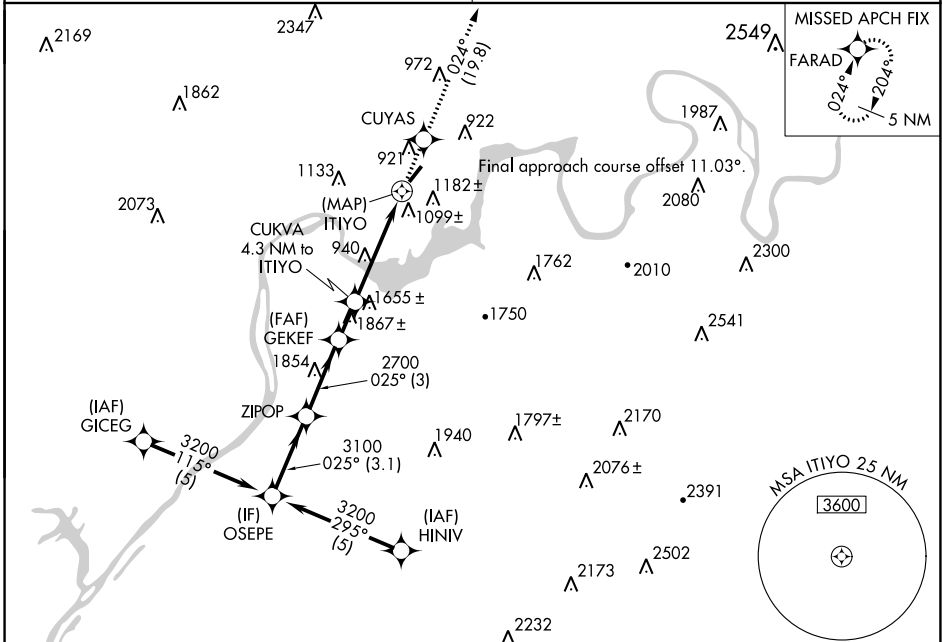
APP CRS	Rwy Idg	3498
025°	TDZE	641
	Apt Elev	641

RNAV (GPS) RWY 4

MARION COUNTY/BROWN FLD (A/P)

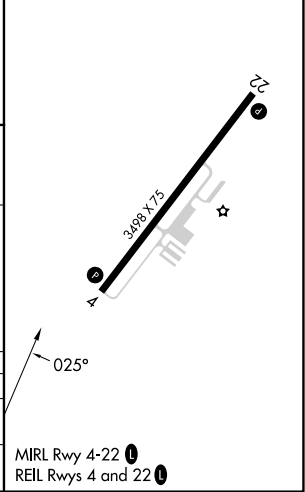
RNP APCH-GPS	Procedure NA at night. Rwy 4 helicopter visibility reduction below 1 SM NA. Obtain local altimeter setting on CTAF; when not received, use Chattanooga altimeter setting and increase all MDAs 60 feet and LNAV Cat A visibility ¼ SM.	MISSED APPROACH: Climb to 4000 direct CUYAS and on track 024° to FARAD and hold.
--------------	--	--

CHATTANOOGA APP CON *	UNICOM
119.2 323.075	122.8 (CTAF) 0



ELEV	641	TDZE	641
------	------------	------	------------

Visual Segment - Obstacles:				4000	CUYAS	tr 024°	FARAD
OSEPE	ZIPOP	GEKEF	CUKVA	ITIYO			
3200	3100	2700	2240				
3.1 NM		3 NM	1.5 NM	4.3 NM	0.5 NM		
CATEGORY	A	B	C	D			
LNAV MDA	1500-1 859 (900-1)	1500-1¼ 859 (900-1¼)	1500-2½ 859 (900-2½)	NA			
CIRCLING	1560-1¼ 919 (1000-1¼)	1840-1½ 1199 (1200-1½)	1860-3 1219 (1300-3)	NA			



SE-1, 28 NOV 2024 to 26 DEC 2024

SE-1, 28 NOV 2024 to 26 DEC 2024