

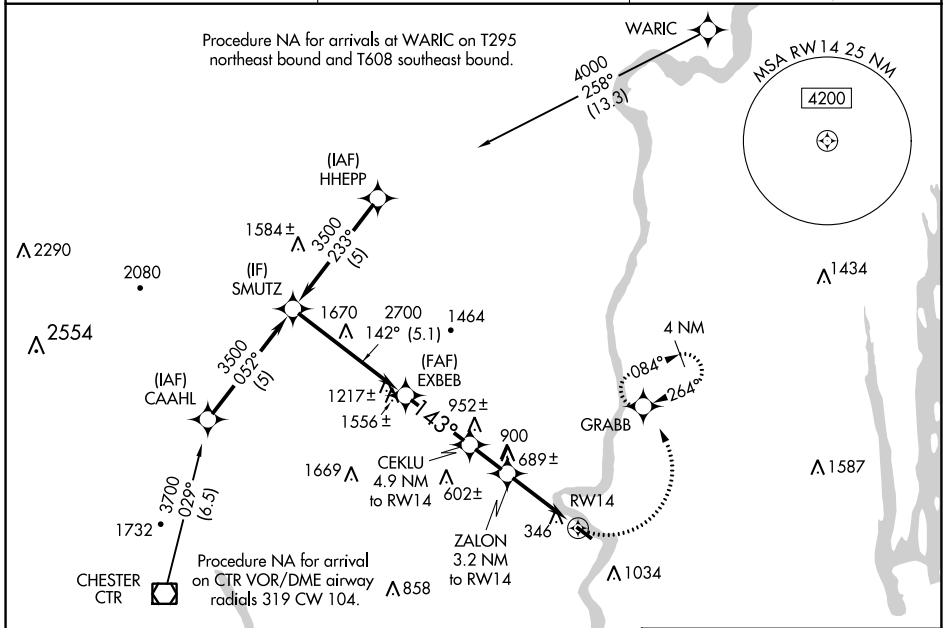
APP CRS	Rwy Idg	3335
143°	TDZE	121
	Apt Elev	121

RNAV (GPS) RWY 14

NORTHAMPTON (7B2)

RNP APCH - GPS.	<p>Procedure NA at night. Obtain local altimeter setting on CTAF; when not received, use Windsor Locks altimeter setting. Rwy 14 helicopter visibility reduction below 1 SM NA.</p>	<p>MISSED APPROACH: Climbing left turn to 3000 direct GRABB and hold, continue climb-in-hold to 3000.</p>
<p>▼ Procedure NA</p>		

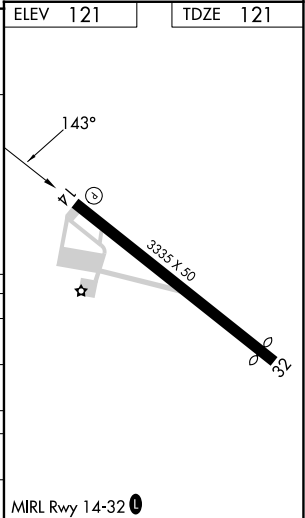
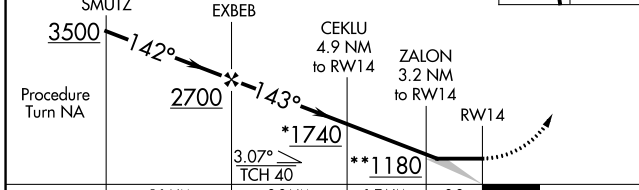
BRADLEY APP CON 125.35 281.5	CLNC DEL 133.6	UNICOM 122.7 (CTAF) 0
--	--------------------------	---------------------------------



NE-1, 28 NOV 2024 to 26 DEC 2024

NE-1, 28 NOV 2024 to 26 DEC 2024

VGSI and descent angles not coincident (VGSI Angle 4.50/TCH 60). * 1820 when using Windsor Locks altimeter setting. ** 1260 when using Windsor Locks altimeter setting.	3000	GRABB	ELEV 121	TDZE 121
---	------	-------	----------	----------



CATEGORY	A	B	C	D
RNAV MDA	940-1 819 (900-1)	940-1¼ 819 (900-1¼)		NA
CIRCLING	940-1¼ 819 (900-1¼)	1400-1½ 1279 (1300-1½)		NA
WINDSOR LOCKS ALTIMETER SETTING MINIMUMS				
RNAV MDA	1020-1¼	899 (900-1¼)		NA
CIRCLING	1020-1¼ 899 (900-1¼)	1460-1½ 1339 (1400-1½)		NA