

LOC/DME I-OCX 109.55 Chan 32 (Y)	APP CRS 005°	Rwy ldg 5301 TDZE 721 Apt Elev 730
---	------------------------	---

ILS or LOC RWY 36

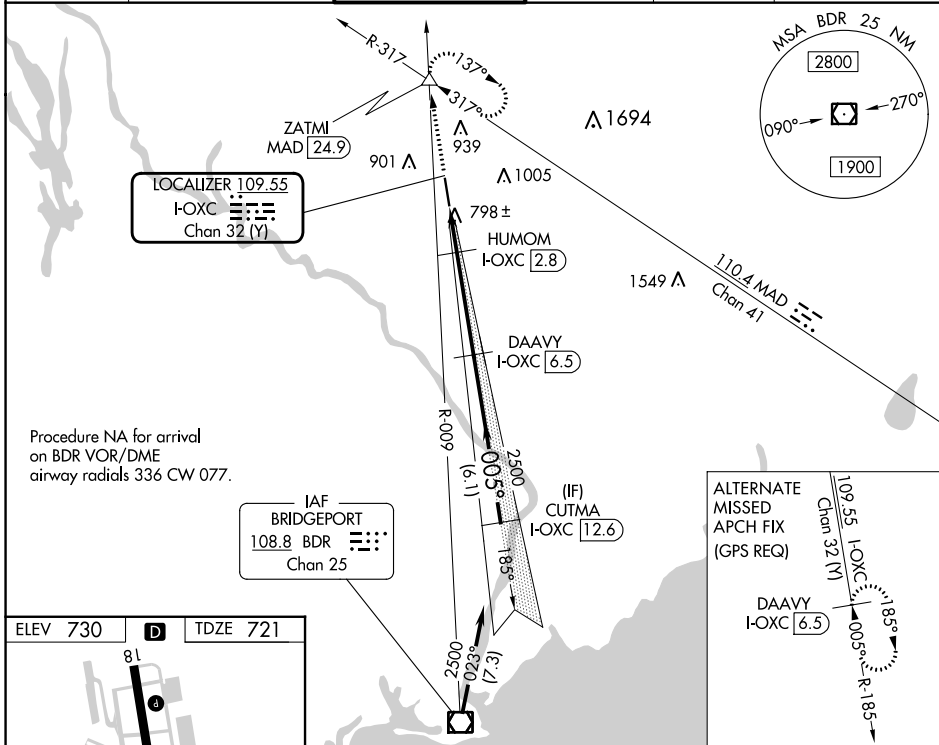
WATERBURY-OXFORD (OXC)

DME required.

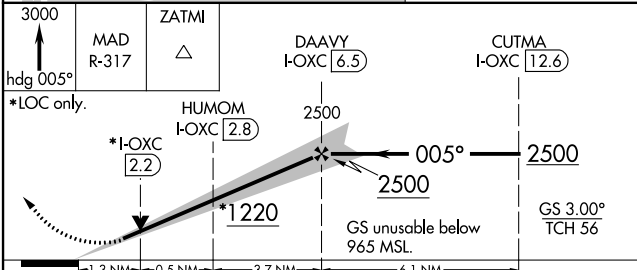
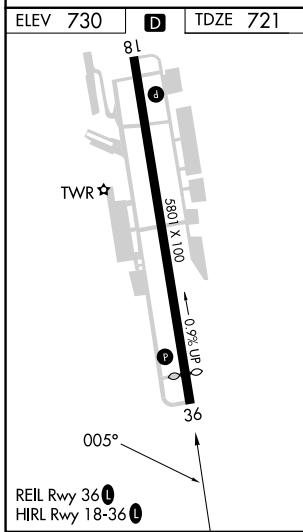
▲ NA Rwy 36 helicopter visibility reduction below ¾ SM NA.

MISSED APPROACH: Climb to 3000 on heading 005° and MAD VOR/DME R-317 to ZATMI INT/MAD 24.9 DME and hold. Continue climb-in-hold to 3000.

ATIS 132.975	NEW YORK APP CON 124.075 343.65	OXFORD TOWER ★ 118.475 (CTAF) U	GND CON 121.65	CLNC DEL 121.65	UNICOM 122.95
------------------------	---	--	--------------------------	---------------------------	-------------------------



Procedure NA for arrival on BDR VOR/DME airway radials 336 CW 077.



CATEGORY	A	B	C	D
S-ILS 36	971-¾ 250 (300-¾)			
S-LOC 36	1140-1	419 (500-1)	1140-1½ 419 (500-1½)	
☑ CIRCLING	1300-1	570 (600-1)	1380-1¾ 650 (700-1¾)	1460-2¼ 730 (800-2¼)

NE-1, 28 NOV 2024 to 26 DEC 2024

NE-1, 28 NOV 2024 to 26 DEC 2024