

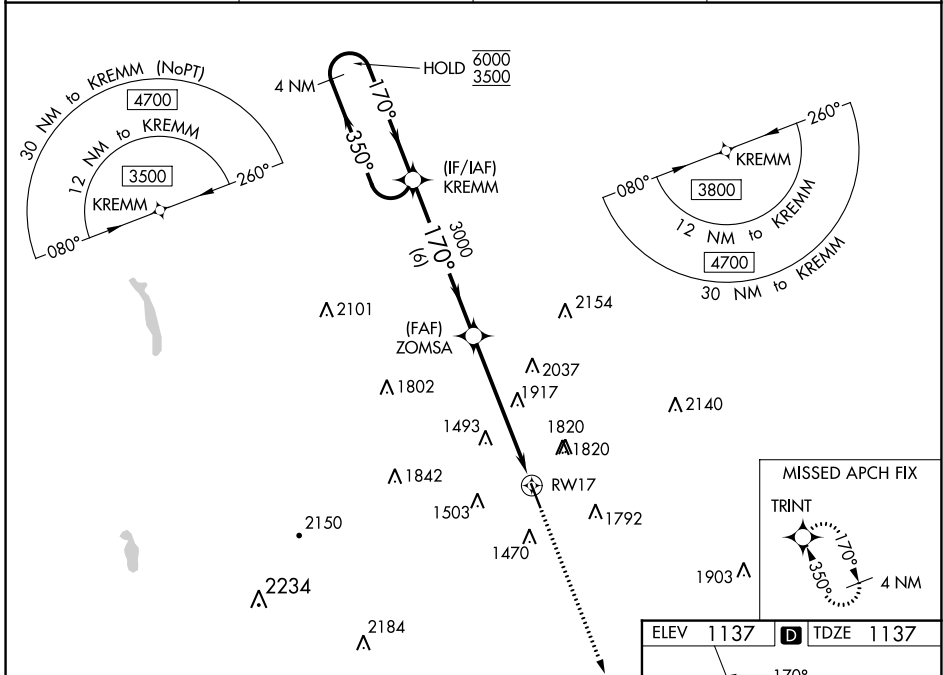
WAAS CH 65818 W17A	APP CRS 170°	Rwy Idg 5014
		TDZE 1137
		Apt Elev 1137

RNAV (GPS) RWY 17

HAMILTON MUNI (VGC)

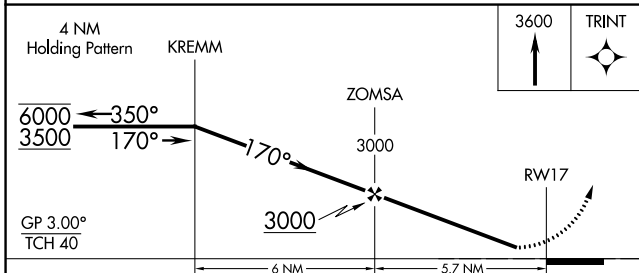
RNP APCH - GPS.		MISSED APPROACH: Climb to 3600 direct TRINT and hold.
▼ Rwy 17 helicopter visibility reduction below 1 SM NA. For uncompensated Baro-VNAV systems, LNAV/VNAV NA below -17°C or above 54°C. Straight-In and Circling Rwy 17 NA at night. ▲ NA		

AWOS-3P 119.425	SYRACUSE APP CON 126.125 269.125	UNICOM 123.0 (CTAF)	122.7
---------------------------	--	-------------------------------	--------------

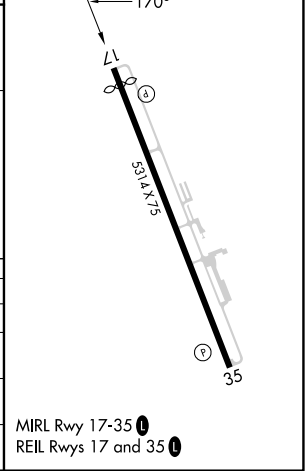


NE-2, 28 NOV 2024 to 26 DEC 2024

NE-2, 28 NOV 2024 to 26 DEC 2024



ELEV 1137	D TDZE 1137
------------------	---------------------------



CATEGORY	A	B	C	D
LPV DA	1447-7/8	310 [400-7/8]		NA
LNAV/VNAV DA	2412-5	1275 [1300-5]		NA
LNAV MDA	2220-1 1/4 1083 (1100-1 1/4)	2220-1 1/2 1083 (1100-1 1/2)	2220-3 1083 (1100-3)	NA
C CIRCLING	2220-1 1/4 1083 (1100-1 1/4)	2220-1 1/2 1083 (1100-1 1/2)	2340-3 1203 (1300-3)	NA

MIRL Rwy 17-35
REIL Rwy 17 and 35