

DALTON, GEORGIA

AL-5792 (FAA)

22363

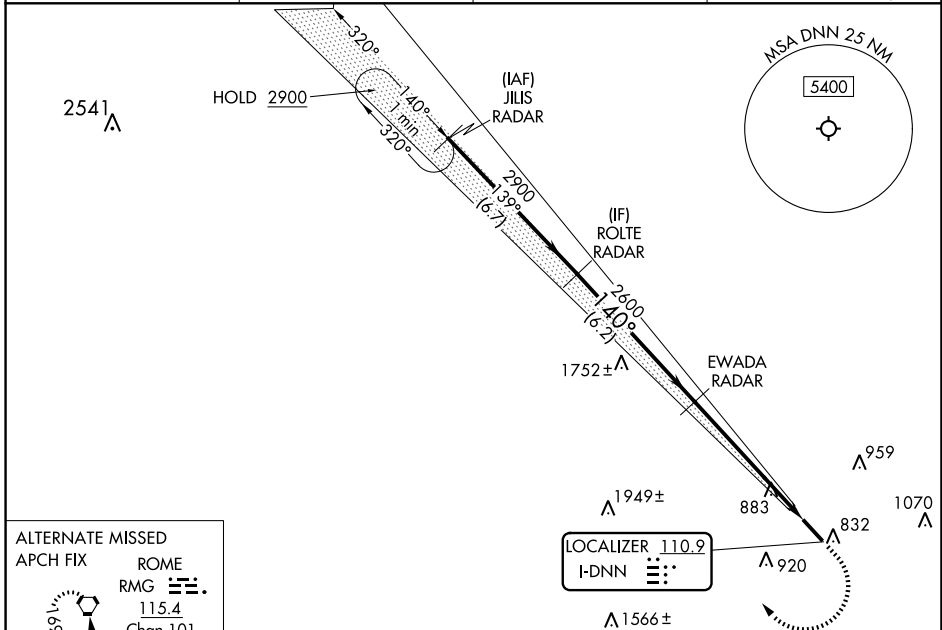
LOC I-DNN <b>110.9</b>	APP CRS <b>140°</b>	Rwy Idg TDZE Apt Elev	<b>5496</b> <b>709</b> <b>709</b>
---------------------------	------------------------	-----------------------------	---

# ILS or LOC RWY 14

DALTON MUNI (DNN)

RNP APCH - GPS. RADAR required.	MALSR 	MISSED APPROACH: Climb to 1700 then climbing right turn to 3000 direct JILS and hold.
Circling to Rwy 32 NA at night. Autopilot coupled approach NA below 1200 MSL. Rwy 14 helicopter visibility reduction below 3/4 SM NA. Inop table does not apply to S-ILS 14. For inop ALS, increase S-LOC 14 Cat A/B visibility to 1 SM.		

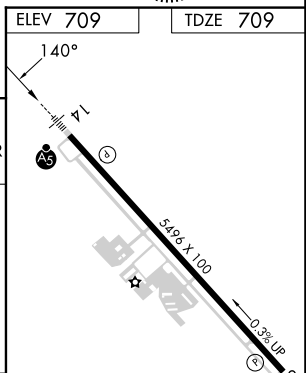
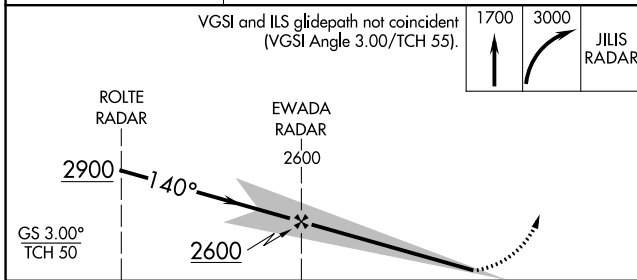
AWOS-3PT <b>127.65</b>	CHATTANOOGA APP CON ★ <b>125.1 379.1</b>	CLNC DEL <b>120.25</b>	UNICOM <b>122.975</b> (CTAF)
---------------------------	---	---------------------------	---------------------------------



ALTERNATE MISSED APCH FIX

ROME  
RMG   
115.4  
Chan 101

R-169



CATEGORY	A	B	C	D	HIRL Rwy 14-32												
S-ILS 14		1074-3/4	365 (400-3/4)														
S-LOC 14	1260-3/4	551 (600-3/4)	1260-1 1/8	551 (600-1 1/8)	FAF to MAP 5.8 NM												
CIRCLING	1260-1	551 (600-1)	1340-1 3/4 631 (700-1 3/4)	1420-2 1/4 711 (800-2 1/4)	<table border="1"> <tr> <td>Knots</td> <td>60</td> <td>90</td> <td>120</td> <td>150</td> <td>180</td> </tr> <tr> <td>Min:Sec</td> <td>5:48</td> <td>3:52</td> <td>2:54</td> <td>2:19</td> <td>1:56</td> </tr> </table>	Knots	60	90	120	150	180	Min:Sec	5:48	3:52	2:54	2:19	1:56
Knots	60	90	120	150	180												
Min:Sec	5:48	3:52	2:54	2:19	1:56												

DALTON, GEORGIA  
Amdt 2 29DEC22

34°43'N-84°52'W

# ILS or LOC RWY 14

SE-4, 28 NOV 2024 to 26 DEC 2024

SE-4, 28 NOV 2024 to 26 DEC 2024