


| | | | |
|---------------------------|------------------------|-----------------------------|---|
| LOC I-BPM 111.9 | APP CRS 133° | Rwy Idg TDZE Apt Elev | 7000 1031 1031 |
|---------------------------|------------------------|-----------------------------|---|

ILS or LOC RWY 13

ST CLOUD RGNL (STC)

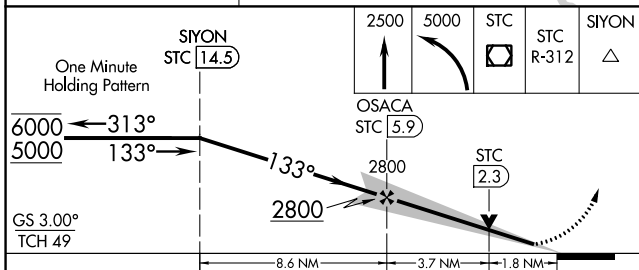
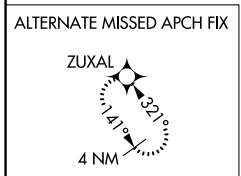
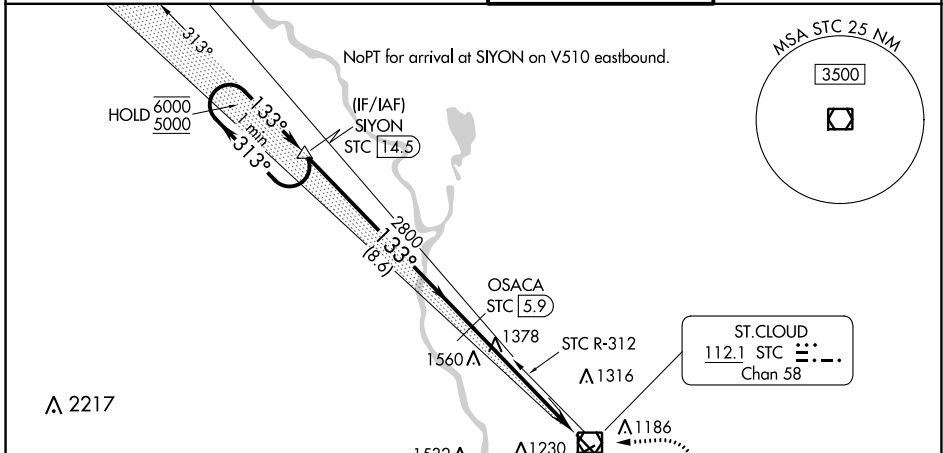
DME required.

⚠ For inop ALS when using Little Falls altimeter setting, increase S-ILS-13 all Cats visibility to 7/8 SM. When local altimeter setting not received, use Little Falls altimeter setting, increase DA to 1307 feet; increase all MDAs 80 feet and S-LOC 13 visibility Cats C and D 1/4 SM, and Circling visibility Cats C and D 1/4 SM. For inop ALS, increase S-LOC 13 Cats C and D visibility to 1 3/4 SM. DME from STC VOR/DME. DME use requires simultaneous reception of I-BPM and STC DME. VDP NA when using Little Falls altimeter setting.

MALSR 

MISSED APPROACH: Climb to 2500 then climbing left turn to 5000 direct STC VOR/DME and on STC VOR/DME R-312 to SIYON/STC 14.5 DME and hold.

| | | | |
|------------------------|---|---|--------------------------|
| ATIS 119.375 | MINNEAPOLIS CENTER 121.05 235.775 | ST. CLOUD TOWER ★ 118.25 (CTAF) 0 | GND CON 123.75 |
|------------------------|---|---|--------------------------|



| | |
|-----------|--------------------|
| ELEV 1031 | D TDZE 1031 |
|-----------|--------------------|

MIRL Rwy 5-23 **0**
HIRL Rwy 13-31 **0**

FAF to MAP 5.4 NM

| | | | | | |
|---------|------|------|------|------|------|
| Knots | 60 | 90 | 120 | 150 | 180 |
| Min:Sec | 5:24 | 3:36 | 2:42 | 2:10 | 1:48 |

| CATEGORY | A | B | C | D |
|----------|------------------------|---|----------------------------|----------------------------|
| S-ILS 13 | 1231-1/2 200 (200-1/2) | | | |
| S-LOC 13 | 1640-1/2 609 (700-1/2) | | 1640-1 3/8 609 (700-1 3/8) | |
| CIRCLING | 1640-1 609 (700-1) | | 1640-1 3/4 609 (700-1 3/4) | 1860-2 3/4 829 (900-2 3/4) |

NC-1, 28 NOV 2024 to 26 DEC 2024

NC-1, 28 NOV 2024 to 26 DEC 2024