

WAAS CH <b>42838</b> <b>W22A</b>	APP CRS <b>224°</b>	Rwy Idg TDZE Apt Elev	<b>5001</b> <b>979</b> <b>979</b>
--	------------------------	-----------------------------	---

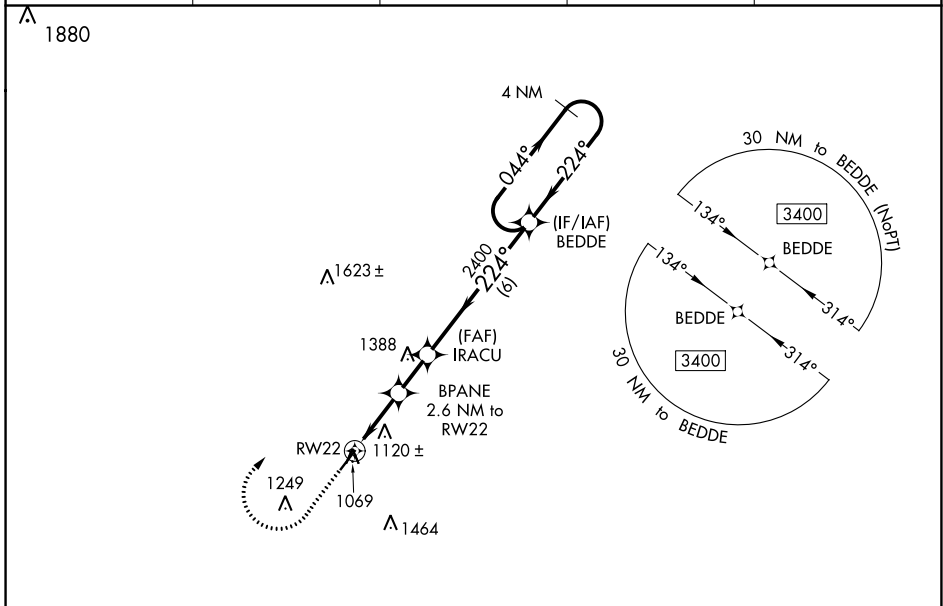
# RNAV (GPS) RWY 22

RICHARD DOWNING (I40)

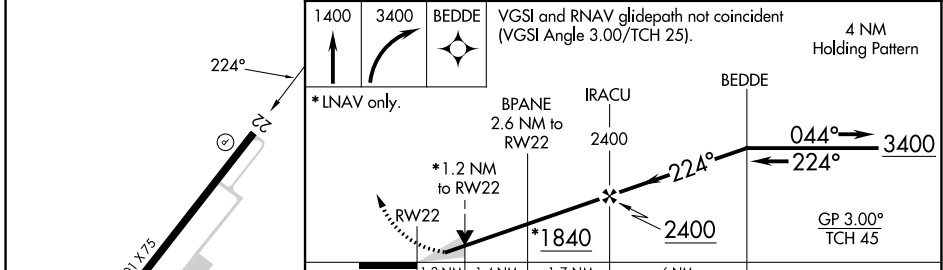
**▽** For uncompensated Baro-VNAV systems, LNAV/VNAV NA below -16°C (4°F) or above 54°C (130°F). Baro-VNAV and VDP NA when using Zanesville altimeter setting.  
**△ NA** DME/DME RNP-0.3 NA. When local altimeter setting not received, use Zanesville altimeter setting and increase LPV DA to 1291 feet and all visibilities ¼ SM, increase LNAV/VNAV DA to 1501 feet and all visibilities ½ SM, increase all MDA 80 feet and LNAV Cat C/D visibility ½ SM, Circling Cat C/D visibility ½ SM.

**MISSED APPROACH:** Climb to 1400 then climbing right turn to 3400 direct BEDDE and hold.

AWOS-3 <b>118.875</b>	INDIANAPOLIS CENTER <b>124.45 323.275</b>	GCO <b>121.725</b>	UNICOM <b>123.0</b> (CTAF)	<b>122.9</b> <b>0</b>
--------------------------	--	-----------------------	-------------------------------	-----------------------



ELEV 979	TDZE 979
----------	----------



1400 3400 BEDDE VGSI and RNAV glidepath not coincident (VGSI Angle 3.00/TCH 25). 4 NM Holding Pattern

\*LNAV only.

BPANE 2.6 NM to RW22 IRACU 2400 BEDDE

\*1.2 NM to RW22 \*1840 2400 044° 3400

GP 3.00° TCH 45

CATEGORY	A	B	C	D
LPV DA		1229-¾	250 (300-¾)	
LNAV/VNAV DA		1439-1½	460 (500-1½)	
LNAV MDA	1380-1	401 (500-1)	1380-1½	401 (500-1½)
<b>C</b> CIRCLING	1440-1 461 (500-1)	1520-1 541 (600-1)	1780-2¼ 801 (900-2¼)	1780-2½ 801 (900-2½)

EC-2, 28 NOV 2024 to 26 DEC 2024

EC-2, 28 NOV 2024 to 26 DEC 2024