

WAAS CH <b>61037</b> <b>W14A</b>	APP CRS <b>137°</b>	Rwy Idg TDZE Apt Elev	<b>4320</b> <b>2589</b> <b>2595</b>
--	------------------------	-----------------------------	---

# RNAV (GPS) RWY 14

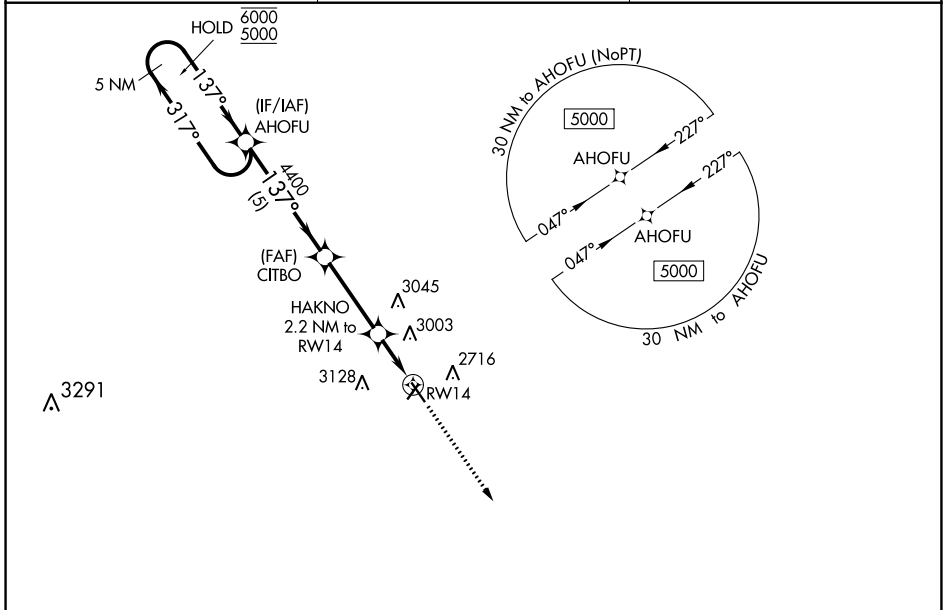
MILLER FLD (VTN)

RNP APCH.

**⚠** For uncompensated Baro-VNAV systems, LNAV/VNAV NA below -25°C or above 54°C .  
Rwy 14 helicopter visibility reduction below ¾ SM NA.

MISSED APPROACH:  
Climb to 5000 direct  
GIYIT and hold.

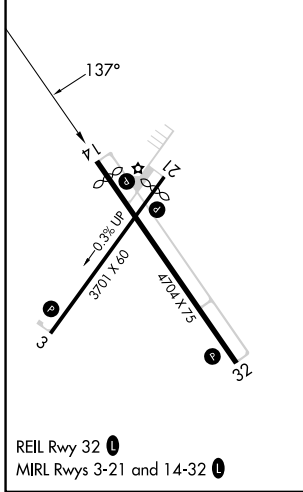
ASOS <b>118.075</b>	DENVER CENTER <b>127.95 338.2</b>	UNICOM <b>122.8 (CTAF) 0</b>
------------------------	--------------------------------------	---------------------------------



NC-2, 28 NOV 2024 to 26 DEC 2024

NC-2, 28 NOV 2024 to 26 DEC 2024

ELEV 2595	TDZE 2589
-----------	-----------



GIYIT 5 NM

5 NM Holding Pattern	AHOFU	CITBO	5000	GIYIT
6000 ← 317°	4400	HAKNO 2.2 NM to RWY14	↑	⬠
5000 → 137°	4400	*1.7 NM to RWY14		
GP 3.00°		*3320		
TCH 40	5 NM	3.4 NM	0.5	1.7 NM

CATEGORY	A	B	C	D
LPV DA	2861-1	272 (300-1)		NA
LNAV/VNAV DA	3239-2¼	650 (700-2¼)		NA
LNAV MDA	3160-1	571 (600-1)		NA
<b>C</b> CIRCLING	3160-1 565 (600-1)	3560-1½ 965 (1000-1½)		NA