

(CWARD2.CWARD) 21168

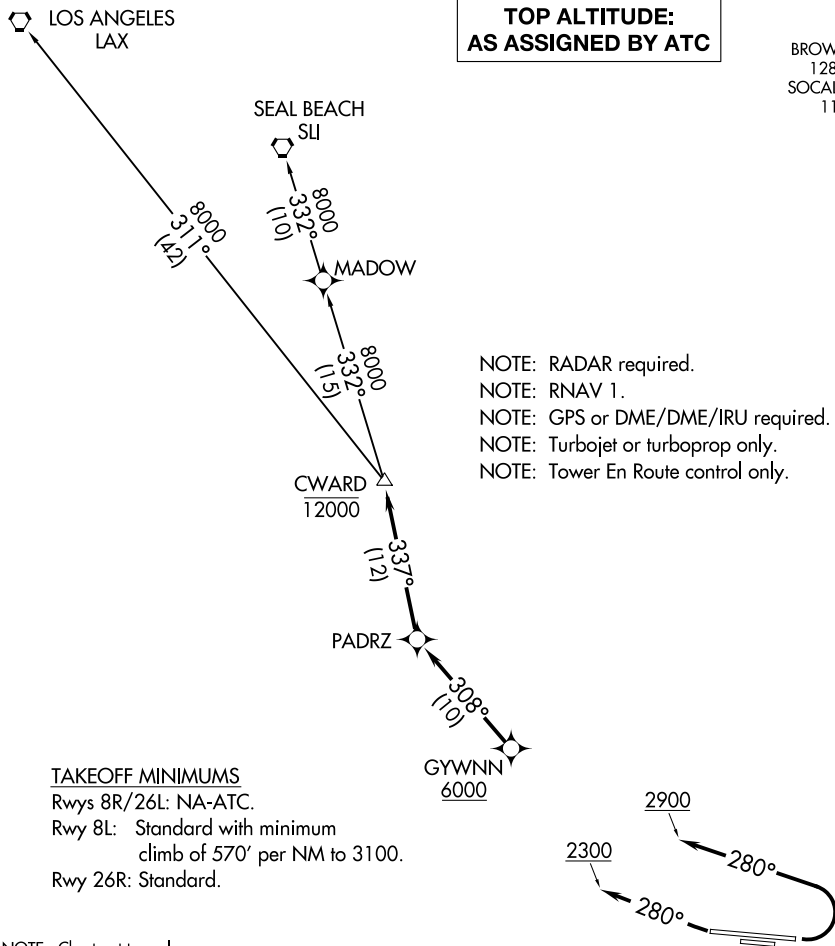
CWARD TWO DEPARTURE (RNAV)

AL-5814 (FAA)

BROWN FLD MUNI (SDM)
SAN DIEGO, CALIFORNIA

**TOP ALTITUDE:
AS ASSIGNED BY ATC**

ATIS
132.35
BROWN TOWER*
128.25 225.4
SOCAL DEP CON
119.6 363.1



- NOTE: RADAR required.
- NOTE: RNAV 1.
- NOTE: GPS or DME/DME/IRU required.
- NOTE: Turbojet or turboprop only.
- NOTE: Tower En Route control only.

TAKEOFF MINIMUMS

- Rwys 8R/26L: NA-ATC.
- Rwy 8L: Standard with minimum climb of 570' per NM to 3100.
- Rwy 26R: Standard.

NOTE: Chart not to scale.



DEPARTURE ROUTE DESCRIPTION

TAKEOFF RUNWAY 8L: Climbing left turn heading 280° to 2900, expect vectors to cross GYWNN at or above 6000, then on track 308° to PADRZ, then on track 337° to cross CWARD at or below 12000, thence. . . .

TAKEOFF RUNWAY 26R: Climbing right turn heading 280° to 2300, expect vectors to cross GYWNN at or above 6000, then on track 308° to PADRZ, then on track 337° to cross CWARD at or below 12000, thence. . . .

. . . on transition. Maintain ATC assigned altitude. Expect filed altitude 10 minutes after departure.

- LOS ANGELES TRANSITION (CWARD2.LAX)
- SEAL BEACH TRANSITION (CWARD2.SLI)

CWARD TWO DEPARTURE (RNAV)

(CWARD2.CWARD) 07DEC17

SAN DIEGO, CALIFORNIA
BROWN FLD MUNI (SDM)

SW-3, 28 NOV 2024 to 26 DEC 2024

SW-3, 28 NOV 2024 to 26 DEC 2024