

WAAS CH 56611 W23A	APP CRS 233°	Rwy Idg 4699 TDZE 431 Apt Elev 434
---------------------------------	------------------------	---

RNAV (GPS) RWY 23

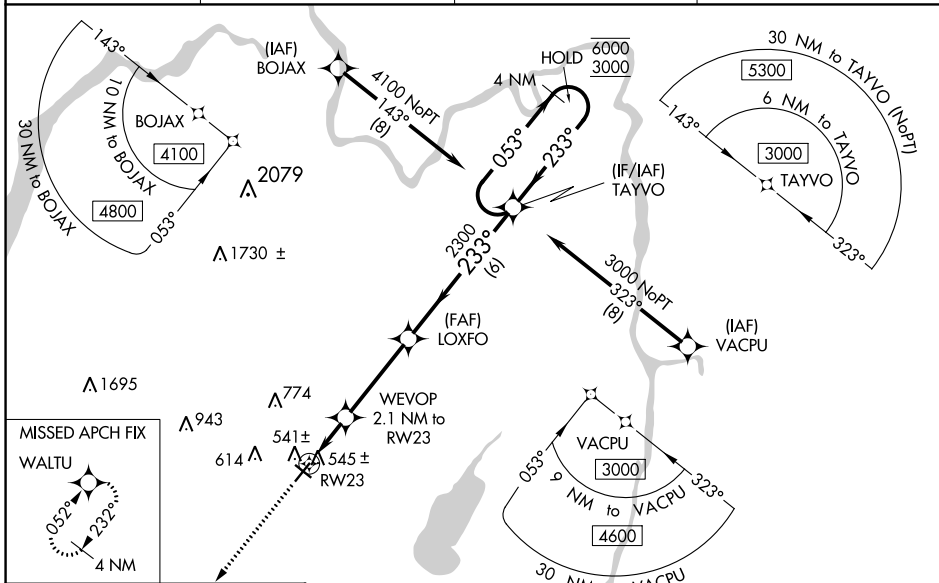
SARATOGA COUNTY (5B2)

RNP APCH

NA Baro-VNAV and VDP NA when using Albany altimeter setting. Rwy 23 helicopter visibility reduction below 3/4 SM NA. For uncompensated Baro-VNAV systems, LNAV/VNAV NA below -15°C or above 54°C. Circling NA at night. When local altimeter setting not received, use Albany altimeter setting and increase all DAs 63 feet and MDAs 80 feet. Increase LPV and LNAV/VNAV all Cats visibility 1/8 SM, LNAV Cats C/D visibility 3/8 SM, and Circling Cat C visibility 1/4 SM.

MISSED APPROACH: Climb to 3000 direct WALTU and hold.

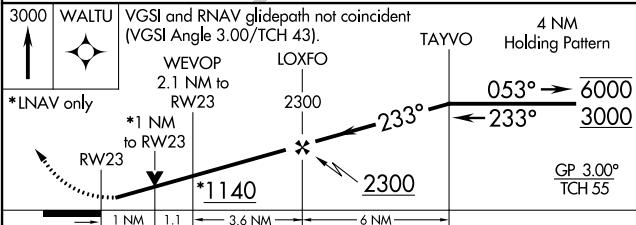
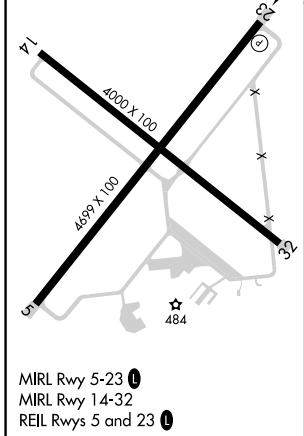
AWOS-3 132.025	ALBANY APP CON 118.05 263.075	CLNC DEL (GCO) 118.125	UNICOM 123.075 (CTAF) 0
--------------------------	---	----------------------------------	-----------------------------------



NE-2, 28 NOV 2024 to 26 DEC 2024

NE-2, 28 NOV 2024 to 26 DEC 2024

ELEV 434	TDZE 431
-----------------	-----------------



CATEGORY	A	B	C	D
LPV DA		698-7/8	267 (300-7/8)	
LNAV/VNAV DA		706-7/8	275 (300-7/8)	
LNAV MDA		800-1	369 (400-1)	
<input checked="" type="checkbox"/> CIRCLING	980-1 546 (600-1)	1080-1 646 (700-1)	1140-2 706 (800-2)	1340-3 906 (1000-3)