

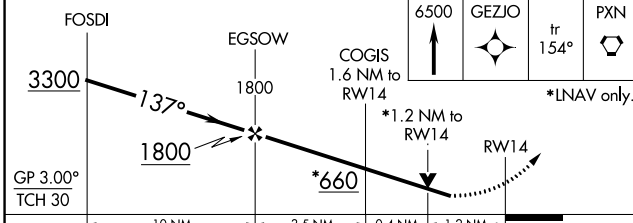
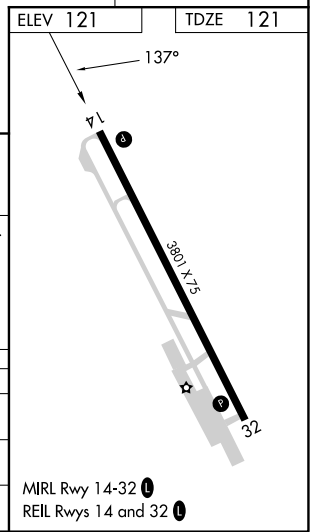
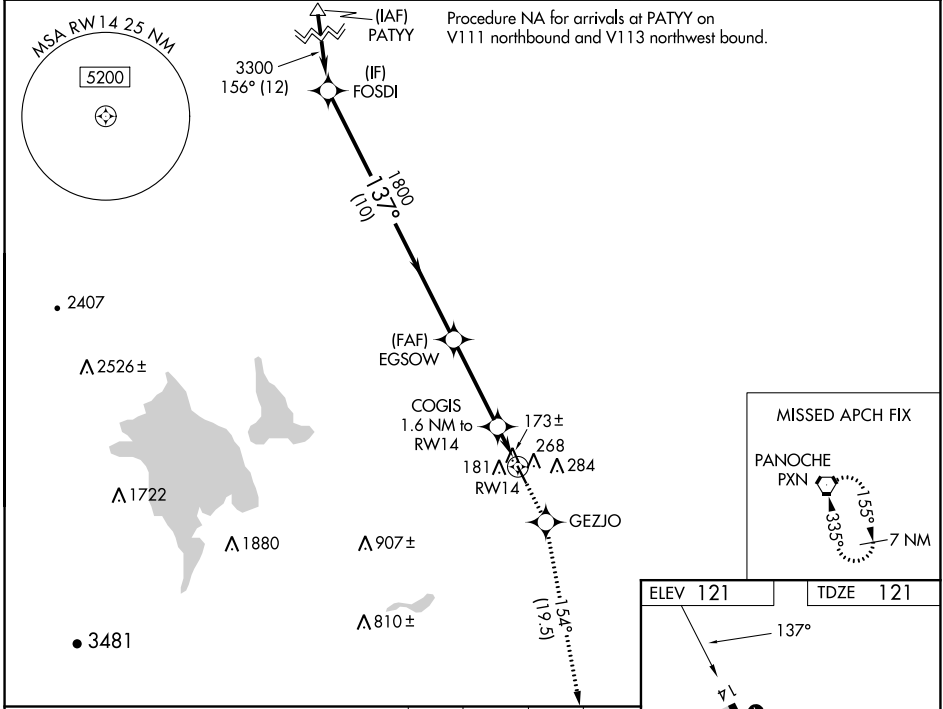
WAAS CH <b>53715</b> <b>W14A</b>	APP CRS <b>137°</b>	Rwy Idg TDZE Apt Elev	<b>3801</b> <b>121</b> <b>121</b>
--	------------------------	-----------------------------	---

# RNAV (GPS) RWY 14

LOS BANOS MUNI (LSN)

<b>RNP APCH.</b> ⚠️ <b>NA</b> Rwy 14 helicopter visibility reduction below ¼ SM NA. Baro-VNAV and VDP NA when using Merced Yosemite Rgnl altimeter setting. For uncompensated Baro-VNAV systems, LNAV/VNAV NA below -15°C or above 54°C. When local altimeter setting not received, use Merced Yosemite Rgnl altimeter setting and increase all DA/MDA 60 feet, and all visibility ¼ SM.		<b>MISSED APPROACH:</b> Climb to 6500 direct GEZJO and on track 154° to PXN VORTAC and hold, continue climb-in-hold to 6500.
---	--	--

AWOS-3 <b>118,675</b>	NORCAL APP CON <b>120.95 269,45</b>	UNICOM <b>122.8</b> (CTAF) <b>📻</b>
--------------------------	--	--



CATEGORY	A	B	C	D
LPV DA	455-1¼ 334 (400-1¼)			
LNAV/VNAV DA	519-1½ 398 (400-1½)			
LNAV MDA	520-1 399 (400-1)		520-1½ 399 (400-1½)	520-1¼ 399 (400-1¼)

SW-2, 28 NOV 2024 to 26 DEC 2024

SW-2, 28 NOV 2024 to 26 DEC 2024