

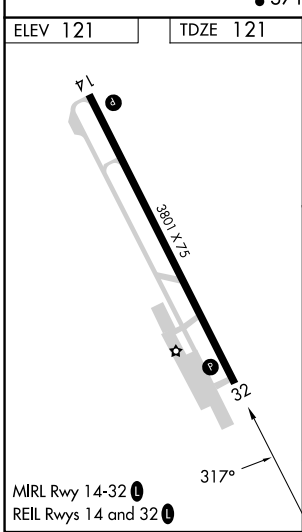
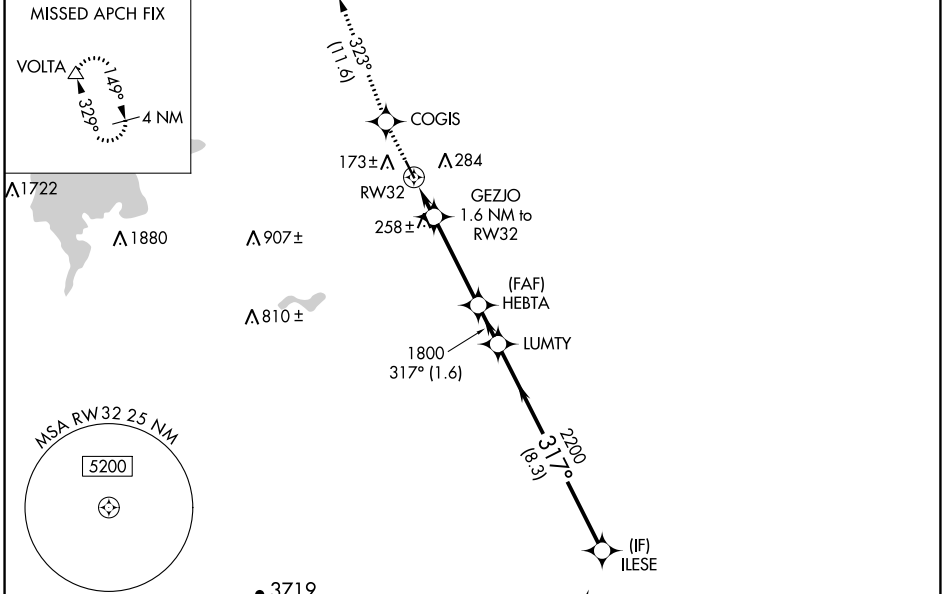
APP CRS 317°	Rwy Idg 3801 TDZE 121 Apt Elev 121
------------------------	---

RNAV (GPS) RWY 32

LOS BANOS MUNI (LSN)

RNP APCH.	<p>▼ Rwy 32 helicopter visibility reduction below 3/4 SM NA. VDP NA when using Merced Yosemite Rgnl altimeter setting. When local altimeter setting not received, use Merced Yosemite Rgnl altimeter setting and increase all MDA 60 feet, and all visibility 1/4 SM.</p> <p>▲ NA</p>	MISSED APPROACH: Climb to 3000 direct COGIS and on track 323° to VOLTA and hold.
-----------	---	--

AWOS-3 118.675	NORCAL APP CON 120.95 269.45	UNICOM 122.8 (CTAF) 0
--------------------------	--	---------------------------------



3000	COGIS	VOLTA	ILESE
↑	fr 323°	△	
	GEZJO 1.6 NM to RW32	HEBTA	LUMTY
	RW32 1.1 NM to RW32	1800	2200
	3.00° TCH 38	317°	3600
	680		
	1.1 NM 0.5 NM 3.6 NM 1.6 NM 8.3 NM		
CATEGORY	A	B	C D
LNAV MDA	520-1	399 (400-1)	520-1 1/8 399 (400-1 1/8)

SW-2, 28 NOV 2024 to 26 DEC 2024

SW-2, 28 NOV 2024 to 26 DEC 2024