

APP CRS 267°	Rwy ldg 4400
	TDZE 893
	Apt Elev 894

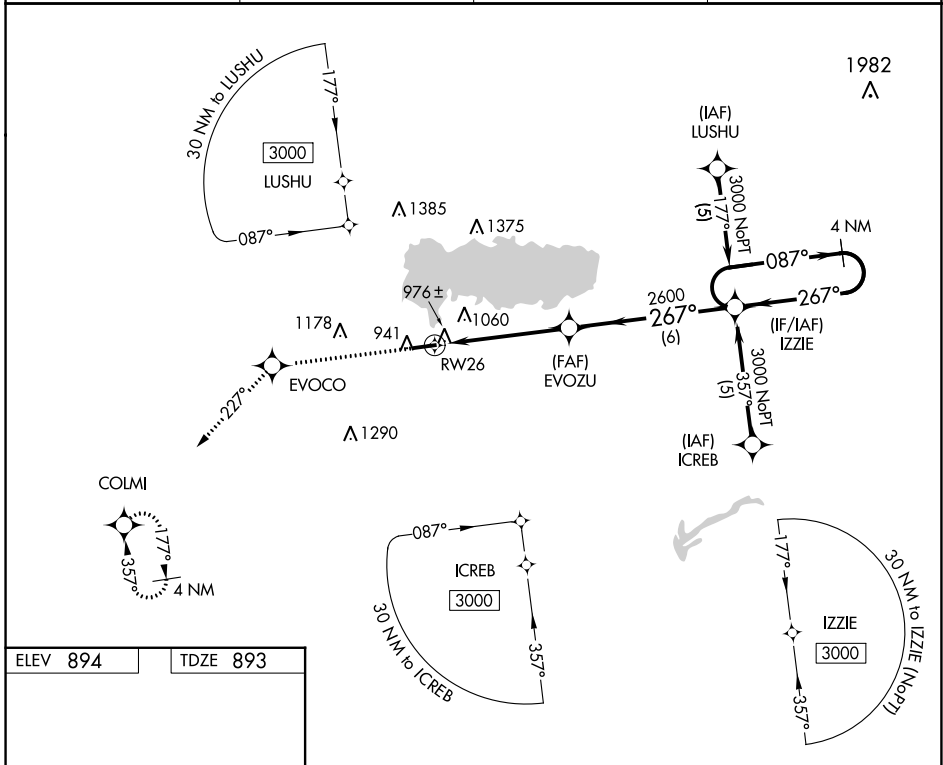
RNAV (GPS) RWY 26

LAKEFIELD (CQA)

⚠ DME/DME RNP-0.3 NA. Visibility reduction by helicopters NA. Baro-VNAV NA. Use Wapakoneta altimeter setting; when not received, use James M Cox Dayton Intl altimeter setting: increase LNAV/VNAV DA to 1349 feet and visibility all Cats ¼ SM; increase all MDA 80 feet and visibility LNAV and Circling Cat C ¼ SM.

⚠ MISSED APPROACH: Climb to 3000 direct EVOCO and on track 227° to COLMI and hold.

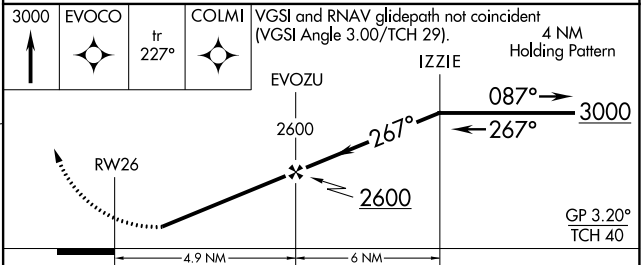
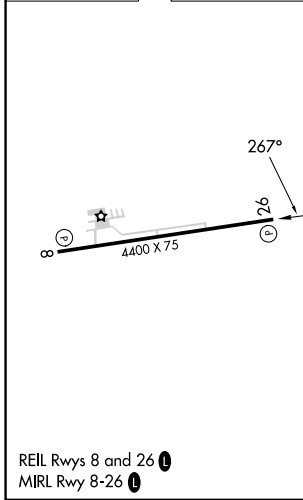
AXV AWOVS-3PT 128.325	COLUMBUS APP CON 134.45 352.05	UNICOM 122.8 (CTAF)	123.3 ⓪
---------------------------------	--	-------------------------------	-----------------------



EC-2, 28 NOV 2024 to 26 DEC 2024

EC-2, 28 NOV 2024 to 26 DEC 2024

ELEV 894	TDZE 893
----------	----------



CATEGORY	A	B	C	D
LNAV/VNAV DA	1277-1¼	384 (400-1¼)		NA
LNAV MDA	1260-1	367 (400-1)		NA
CIRCLING	1360-1 466 (500-1)	1400-1 506 (600-1)	1480-1½ 586 (600-1½)	NA