

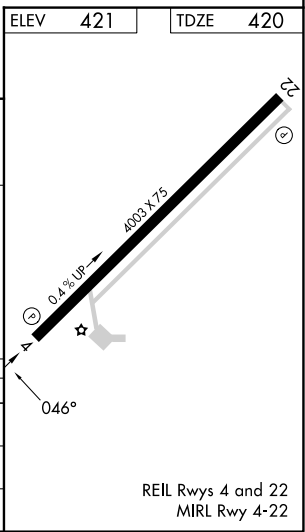
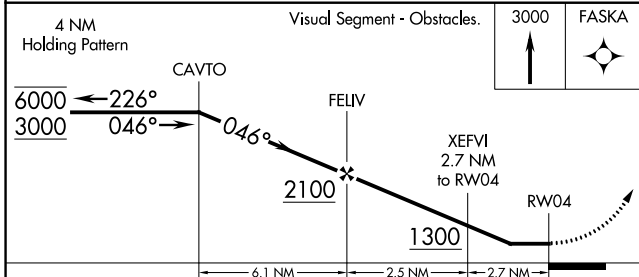
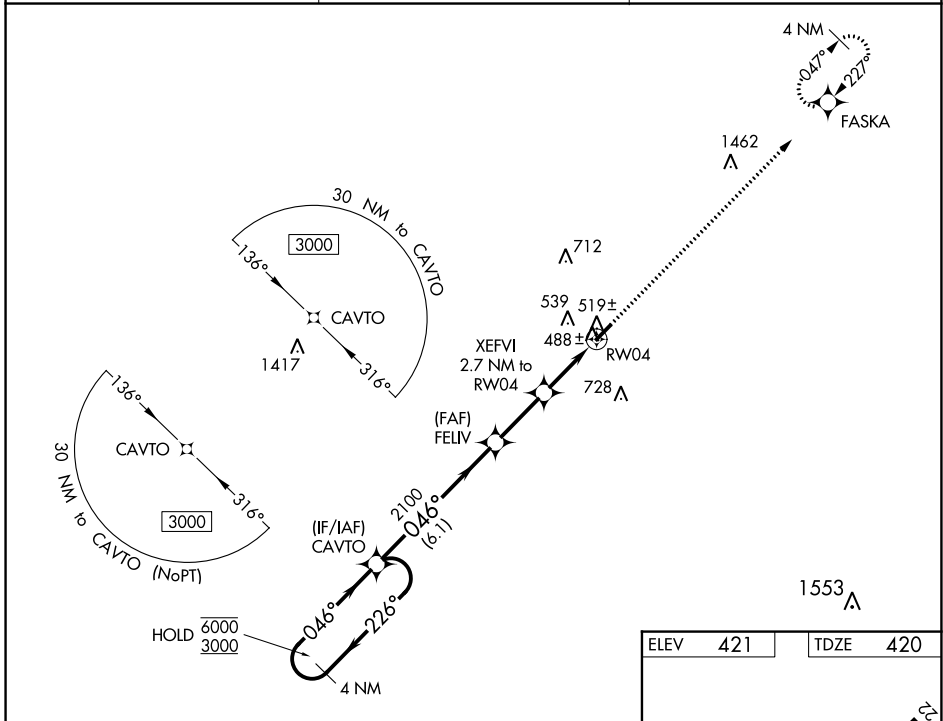
WAAS CH 78038 W04A	APP CRS 046°	Rwy Idg TDZE Apt Elev	4003 420 421
--	------------------------	-----------------------------	---

RNAV (GPS) RWY 4

HUMBOLDT MUNI (M53)

RNP APCH - GPS.		MISSED APPROACH: Climb to 3000 direct FASKA and hold.
<p>▼ Rwy 4 helicopter visibility reduction below 1 SM NA. Use Jackson altimeter setting, when not received, use Dyersburg altimeter setting; increase all MDA 60 feet; increase LP Cats C/D visibility 1/8 mile; increase LNAV Cats C/D and Circling Cats C/D visibility 1/4 mile. Straight-in Rwy 4 NA at night, Circling Rwy 4 NA at night.</p> <p>▲ NA</p>		

MKL ASOS 119.325	MEMPHIS CENTER 134.65 316.15	UNICOM 122.8 (CTAF)
----------------------------	--	-------------------------------



CATEGORY	A	B	C	D
LP MDA	780-1	360 (400-1)		
LNAV MDA	800-1	380 (400-1)		
▲ CIRCLING	900-1 479 (500-1)	920-1 499 (500-1)	1120-2 699 (700-2)	1120-2 1/4 699 (700-2 1/4)

SE-1, 28 NOV 2024 to 26 DEC 2024

SE-1, 28 NOV 2024 to 26 DEC 2024