

WAAS CH <b>82019</b> <b>W02A</b>	APP CRS <b>024°</b>	Rwy Idg <b>5000</b> TDZE <b>890</b> Apt Elev <b>892</b>
--	------------------------	---

# RNAV (GPS) RWY 2

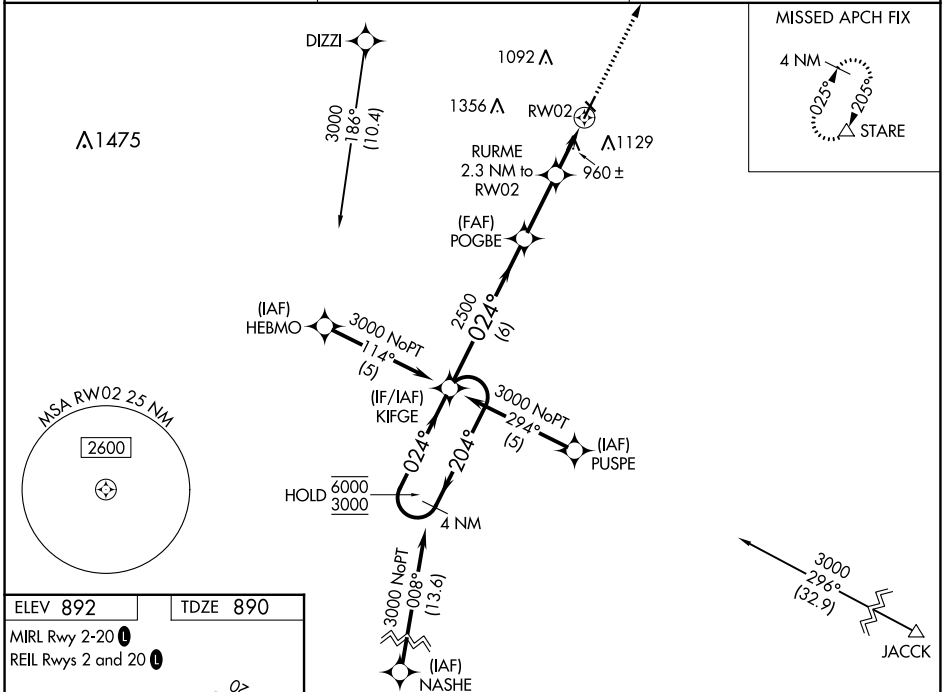
NEVADA MUNI (NVD)

RNP APCH - GPS.

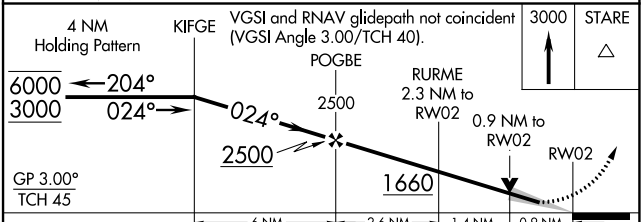
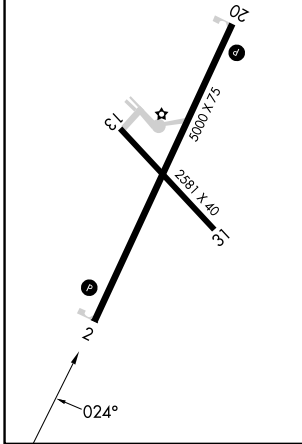
**NA** Circling NA to Rwy 13 and 31. Baro-VNAV and VDP NA when using Joplin altimeter setting. For uncompensated Baro-VNAV systems, LNAV/VNAV NA below -16°C or above 54°C. When local altimeter setting not received, use Joplin altimeter setting: increase LPV DA to 1200 feet; increase LNAV/VNAV DA to 1329 feet and all visibilities ¼ SM; increase all MDAs 120 feet and LNAV visibility Cat C ¾ SM, and Circling visibility Cat C ¼ SM.

MISSED APPROACH:  
Climb to 3000 direct STARE and hold.

AWOS-3PT <b>119.175</b>	KANSAS CITY CENTER <b>125.55 327.0</b>	UNICOM <b>122.8 (CTAF)</b>
----------------------------	---	-------------------------------



ELEV 892	TDZE 890
MIRL Rwy 2-20	REIL Rwy 2 and 20



CATEGORY	A		B		C		D
	1090-1	200 (200-1)	1219-1	329 (400-1)	1220-1	330 (400-1)	NA
LPV DA	1090-1	200 (200-1)	1219-1	329 (400-1)	1220-1	330 (400-1)	NA
LNAV/VNAV DA	1219-1	329 (400-1)	1220-1	330 (400-1)	1220-1	330 (400-1)	NA
LNAV MDA	1220-1	330 (400-1)	1220-1	330 (400-1)	1220-1	330 (400-1)	NA
CIRCLING	1260-1	1440-1	1440-1	1440-1½	1440-1½	1440-1½	NA
	368 (400-1)	548 (600-1)	548 (600-1)	548 (600-1½)	548 (600-1½)	548 (600-1½)	NA

NC-3, 28 NOV 2024 to 26 DEC 2024

NC-3, 28 NOV 2024 to 26 DEC 2024