

WAAS CH 93922 W17A	APP CRS 172°	Rwy Idg TDZE Apt Elev	4305 1616 1616
--	------------------------	-----------------------------	---

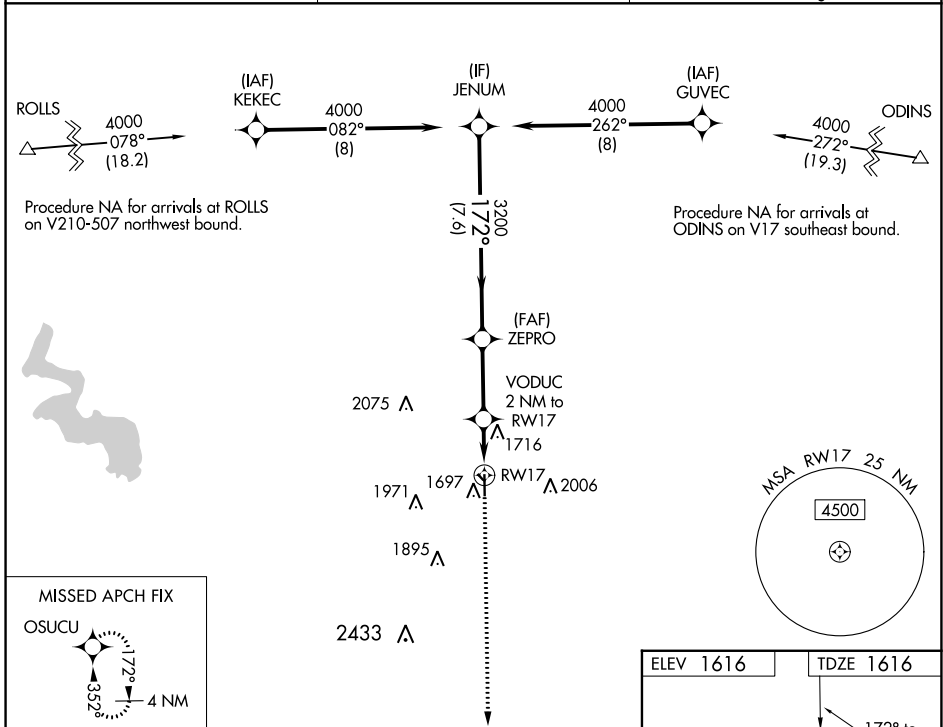
RNAV (GPS) RWY 17

CLINTON RGNL (CLK)

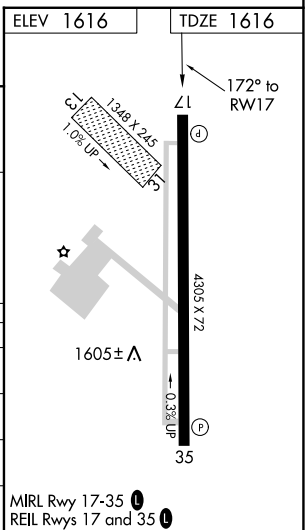
⚠ DME/DME RNP-0.3 NA. For uncompensated Baro-VNAV systems, LNAV/VNAV NA below -12°C (11°F) or above 54°C (130°F). Circling NA to Rwy 13 and 31. When local altimeter setting not received, use Weatherford altimeter setting; Increase DA to 1898 and all visibilities ½ mile; increase all MDA 40 feet and visibility Cat C ¼ mile. Baro-VNAV and VDP NA when using Weatherford altimeter setting.

MISSED APPROACH: Climb to 4000 direct OSUCU and hold.

AWOS-3 119.225	FORT WORTH CENTER 128.4 269.37	UNICOM 122.8 (CTAF) 0
--------------------------	--	---------------------------------



JENUM	4000		ZEPRO	3200		VODUC 2 NM to RW17	4000	OSUCU	
	172°			3200					*LNAV only.
GP 3.00° TCH 40		7.6 NM		2.9 NM		*1 NM to RW17		RW17	
*2280									
CATEGORY	A	B	C	D					
LPV DA	1866-7/8		250 (300-7/8)		NA				
LNAV/VNAV DA	1866-7/8		250 (300-7/8)		NA				
LNAV MDA	1980-1		364 (400-1)		NA				
CIRCLING	2100-1 484 (500-1)		2220-1 604 (700-1)		2320-2 704 (800-2)		NA		



SC-1, 28 NOV 2024 to 26 DEC 2024

SC-1, 28 NOV 2024 to 26 DEC 2024