

WAAS CH <b>58112</b> <b>W05A</b>	APP CRS <b>050°</b>	Rwy Idg TDZE <b>123</b> Apt Elev <b>125</b>	<b>5001</b>
--	------------------------	---	-------------

# RNAV (GPS) RWY 5

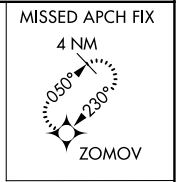
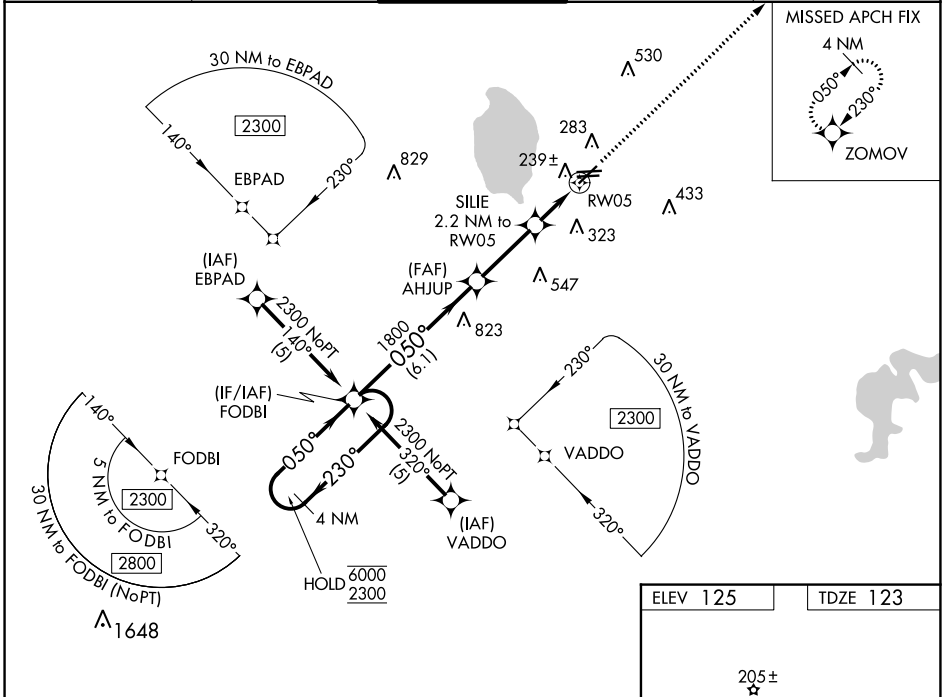
BARTOW EXEC (BOW)

RNP APCH.

**⚠** Rwy 5 helicopter visibility reduction below ¼ SM NA. When local altimeter setting not received, use Tampa Intl altimeter setting and increase LPV DA to 553 feet, LNAV/VNAV DA to 684 feet and all MDA 120 feet, increase LNAV Cat C visibility ¼ SM, Cat D ½ SM. For uncompensated Baro-VNAV systems, LNAV/VNAV NA below -1.5°C or above 54°C. VDP and Baro-VNAV NA when using Tampa Intl altimeter setting.

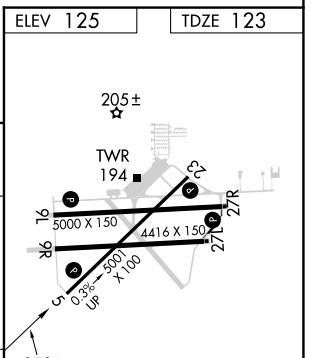
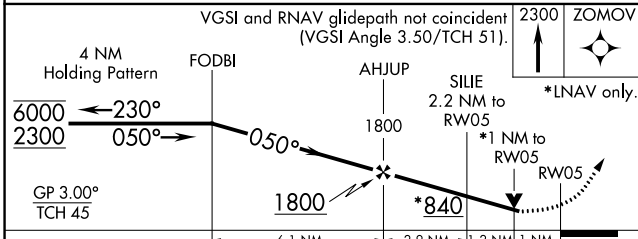
**MISSED APPROACH:**  
Climb to 2300 direct ZOMOV and hold.

AWOS-3 <b>123.775</b>	TAMPA APP CON <b>120.65 290.3</b>	<b>BARTOW TOWER ★</b> <b>121.20 (CTAF)</b>	GND CON <b>121.9</b>	UNICOM <b>122.95</b>
--------------------------	--------------------------------------	---	-------------------------	-------------------------



SE-3, 28 NOV 2024 to 26 DEC 2024

SE-3, 28 NOV 2024 to 26 DEC 2024



CATEGORY	A	B	C	D
LPV DA	447-1¼		324 (400-1¼)	
LNAV/VNAV DA	509-1½		386 (400-1½)	
LNAV MDA	520-1 397 (400-1)		520-1½ 397 (400-1½)	520-1¼ 397 (400-1¼)

MIRL Rwy 5-23 and 9L-27R  
REIL Rwy 5, 23, 9L and 27R