

WAAS CH 45605 W23A	APP CRS 229°	Rwy Idg TDZE Apt Elev	3995 1027 1072
--	------------------------	-----------------------------	---

RNAV (GPS) RWY 23

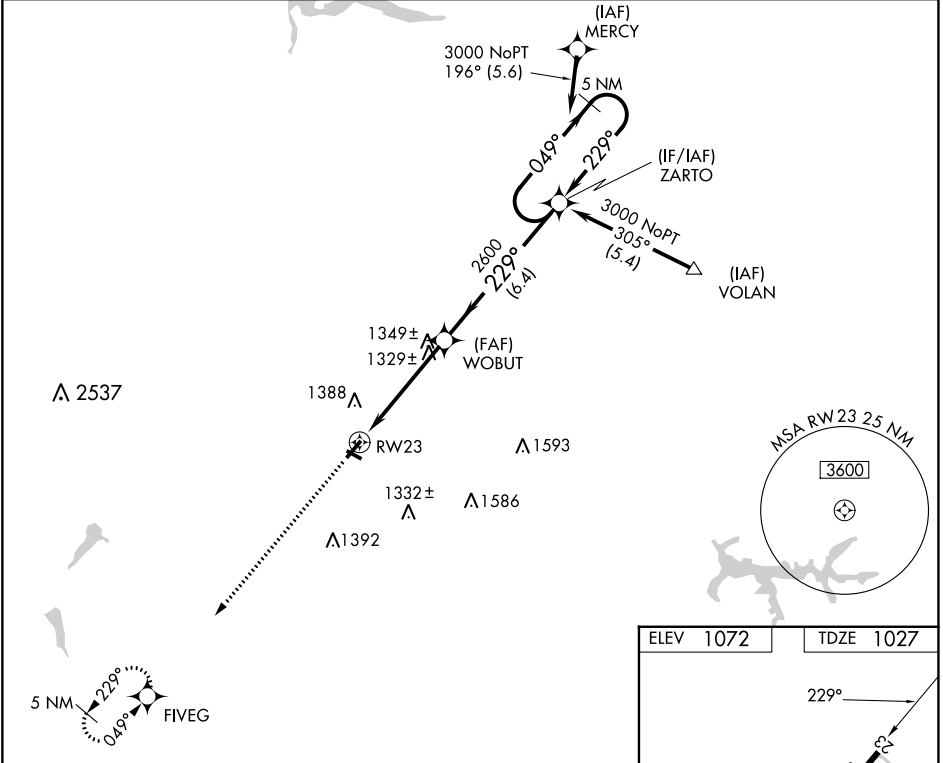
NEW CASTLE MUNI (UCP)

RNP APCH.

⚠ VDP NA when using Youngstown/Warren Rgnl altimeter setting. When local altimeter setting not received, use Youngstown/Warren Rgnl altimeter setting and increase all DA 61 feet and all MDA 80 feet; increase LNAV Cat C and Circling Cat C visibility $\frac{1}{4}$ SM.

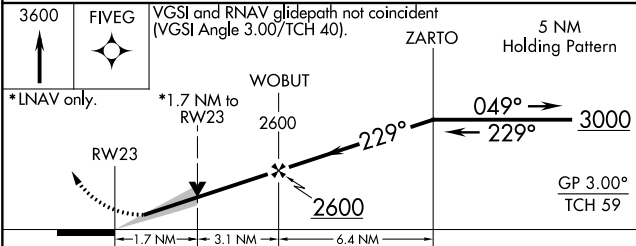
MISSED APPROACH:
Climb to 3600 direct FIVEG and hold.

AWOS-3PT 124.175	YOUNGSTOWN APP CON ★ 133.95 322.3	UNICOM 123.0 (CTAF) ①
----------------------------	---	---------------------------------

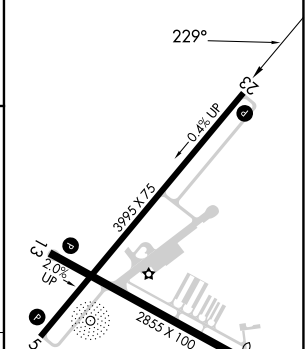


NE-4, 28 NOV 2024 to 26 DEC 2024

NE-4, 28 NOV 2024 to 26 DEC 2024



ELEV 1072	TDZE 1027
-----------	-----------



CATEGORY	A	B	C	D
LPV DA	1288-1		261 (300-1)	NA
LNAV MDA	1580-1	553 (600-1)	1580-1½ 553 (600-1½)	NA
CIRCLING	1600-1 528 (600-1)	1700-1 628 (700-1)	1700-1¾ 628 (700-1¾)	NA

REIL Rwy 5 and 23 ①
MIRL Rwy 5-23 ①