

WAAS CH 78005 W05A	APP CRS 049°	Rwy Idg TDZE 1027 Apt Elev 1072	3995
--	------------------------	---	-------------

RNAV (GPS) RWY 5

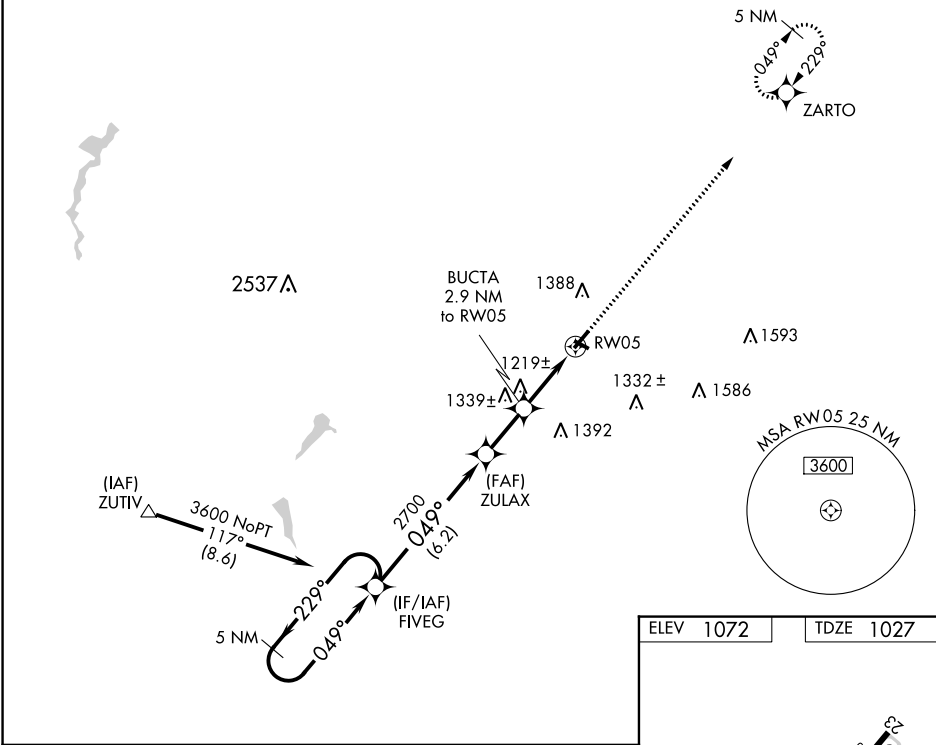
NEW CASTLE MUNI (UCP)

RNP APCH.

▼ VDP NA when using Youngstown/Warren Rgnl altimeter setting. Rwy 5 helicopter visibility reduction below 3/4 SM NA. When local altimeter setting not received, use Youngstown/Warren Rgnl altimeter setting and increase all DA 61 feet and all MDA 80 feet; increase LNAV Cat C and Circling Cat C visibility 1/4 SM.

MISSED APPROACH: Climb to 3000 direct ZARTO and hold.

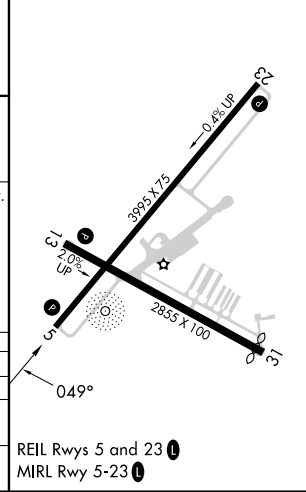
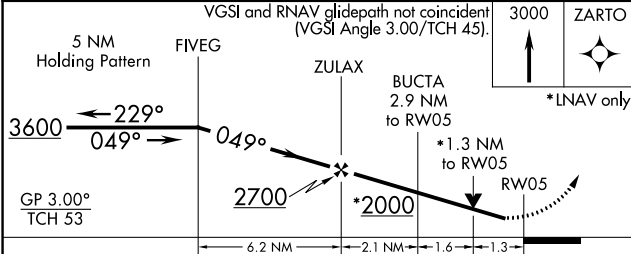
AWOS-3PT 124.175	YOUNGSTOWN APP CON★ 133.95 322.3	UNICOM 123.0 (CTAF) 0
----------------------------	--	---------------------------------



NE-4, 28 NOV 2024 to 26 DEC 2024

NE-4, 28 NOV 2024 to 26 DEC 2024

ELEV 1072	TDZE 1027
-----------	-----------



CATEGORY	A	B	C	D
LPV DA	1307-1		280 (300-1)	NA
LNAV MDA	1480-1	453 (500-1)	1480-1 ³ / ₈ 453 (500-1 ³ / ₈)	NA
CIRCLING	1600-1 528 (600-1)	1700-1 628 (700-1)	1700-1 ³ / ₄ 628 (700-1 ³ / ₄)	NA

REIL Rwy 5 and 23 0
MIRL Rwy 5-23 0