

RAVENNA, OHIO

AL-5844 (FAA)

24025

VOR/DME ACO <b>114.4</b> Chan <b>91</b>	APP CRS <b>344°</b>	Rwy Idg TDZE Apt Elev	<b>N/A</b> <b>N/A</b> <b>1198</b>
---	------------------------	-----------------------------	---

**VOR-A**  
PORTAGE COUNTY (POV)

**⚠** When local altimeter setting not received, use Akron-Canton Rgnl altimeter setting and increase all MDA 60 feet.  
**⚠** Circling Cat C NA at night.

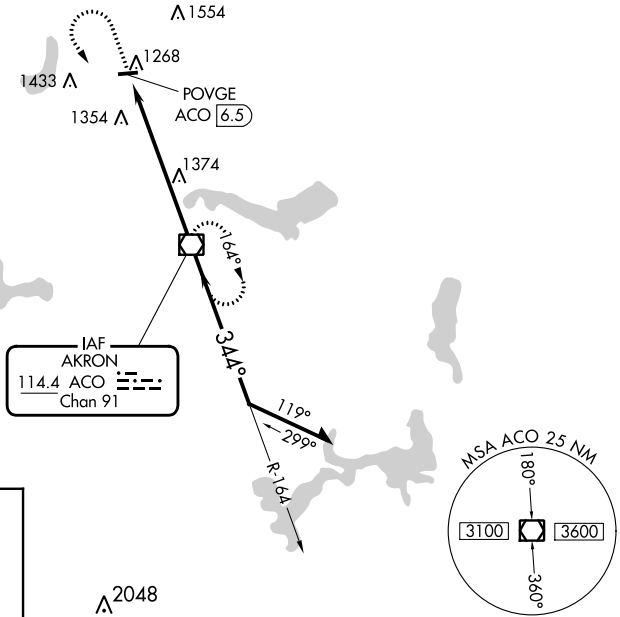
**MISSED APPROACH:** Climb to 2900 then left turn direct ACO VOR/DME and hold.

AWOS-3  
**118.675**

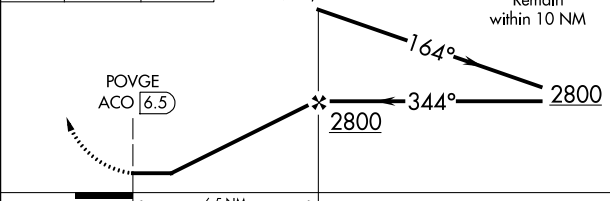
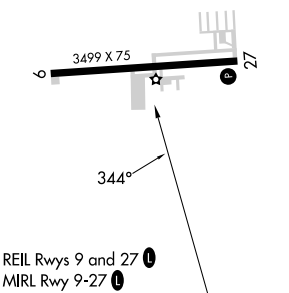
CLEVELAND APP CON★  
**125.5 371.875**

CLNC DEL  
**125.65**

UNICOM  
**123.05** (CTAF) **📞**



ELEV 1198



FAF to MAP 6.5 NM					
Knots	60	90	120	150	180
Min:Sec	6:30	4:20	3:15	2:36	2:10

CATEGORY	A	B	C	D
<input checked="" type="checkbox"/> CIRCLING	1740-1 542 (600-1)	1800-1 602 (700-1)	1920-2 722 (800-2)	NA

RAVENNA, OHIO  
Amdt 6B 30JAN20

41°13'N - 81°15'W

PORTAGE COUNTY (POV)  
**VOR-A**

EC-2, 28 NOV 2024 to 26 DEC 2024

EC-2, 28 NOV 2024 to 26 DEC 2024