

(BEAVY6.BEAVY) 24081

AL-5853 (FAA)

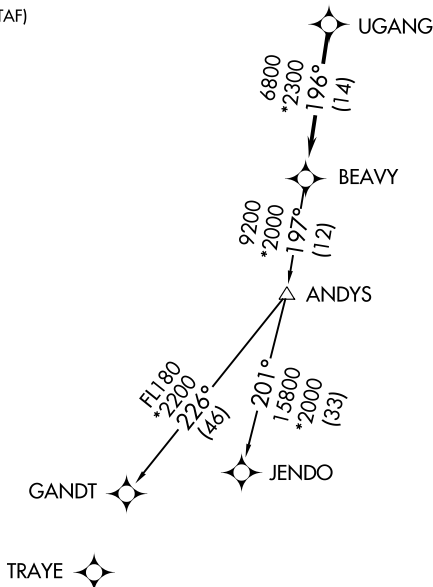
# BEAVY SIX DEPARTURE (RNAV)

LANCASTER COUNTY-MC WHIRTER FLD (LKR)  
LANCASTER, SOUTH CAROLINA

CHARLOTTE DEP CON  
120.05 307.8  
AWOS-3  
120.825  
GCO  
121.725  
UNICOM (CTAF)  
122.725

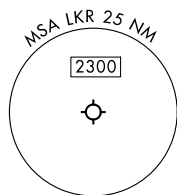
RNAV 1-DME/DME/IRU or GPS.  
RADAR required.

**TOP ALTITUDE:  
3000**



TAKEOFF MINIMUMS  
Rwys 6, 24: Standard.

- NOTE: For turbo jets only.
- NOTE: If unable to accept climb rates, advise ATC on initial contact.
- NOTE: Transponder code will be issued via PDC or Charlotte CLNC DEL.
- NOTE: Upon reaching 10000 MSL, accelerate to and maintain 280K, if unable advise ATC.



NOTE: Chart not to scale.

## DEPARTURE ROUTE DESCRIPTION

Climb on heading assigned by ATC, on RADAR vectors to UGANG, then on depicted route to BEAVY. Then on assigned transition maintain 3000, expect clearance to filed altitude within 10 minutes after departure.

GANDT TRANSITION (BEAVY6.GANDT)  
JENDO TRANSITION (BEAVY6.JENDO)

BEAVY SIX DEPARTURE (RNAV)  
(BEAVY6.BEAVY) 21MAR24

LANCASTER, SOUTH CAROLINA  
LANCASTER COUNTY-MC WHIRTER FLD (LKR)

SE-2, 28 NOV 2024 to 26 DEC 2024

SE-2, 28 NOV 2024 to 26 DEC 2024