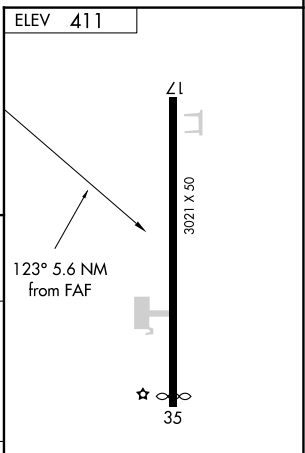
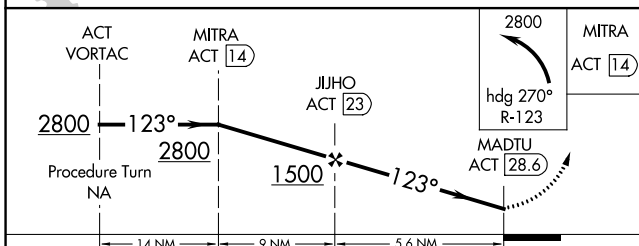
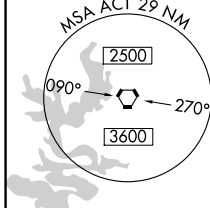
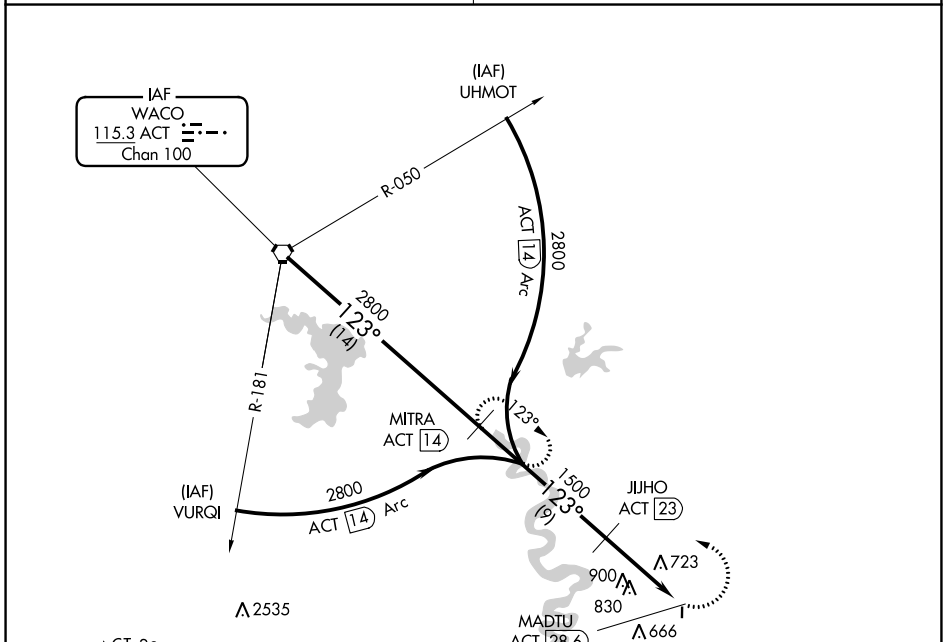


VOR ACT <b>115.3</b> Chan <b>100</b>	APP CRS <b>123°</b>	Rwy Idg TDZE Apt Elev <b>N/A</b> <b>N/A</b> <b>411</b>
--	------------------------	---

# VOR/DME or GPS-A

MARLIN (T15)

<p><b>▼</b> Use Waco Rgnl altimeter setting.</p> <p><b>▲</b> NA</p>	<p>MISSED APPROACH: Climbing left turn to 2800 via heading 270° and R-123 to MITRA/1.4 DME and hold.</p>
<p>WACO APP CON ★</p> <p><b>127.65 352.0</b></p>	<p>CTAF</p> <p><b>122.9</b></p>



CATEGORY	A	B	C	D
CIRCLING	1280-1 869 (900-1)	1280-1¼ 869 (900-1¼)	NA	NA

IURL Rwy 17-35

SC-5, 28 NOV 2024 to 26 DEC 2024

SC-5, 28 NOV 2024 to 26 DEC 2024