


LOC I-GTR <b>110.7</b>	APP CRS <b>182°</b>	Rwy Idg <b>8003</b>
		TDZE <b>264</b>
		Apt Elev <b>264</b>

# ILS or LOC RWY 18

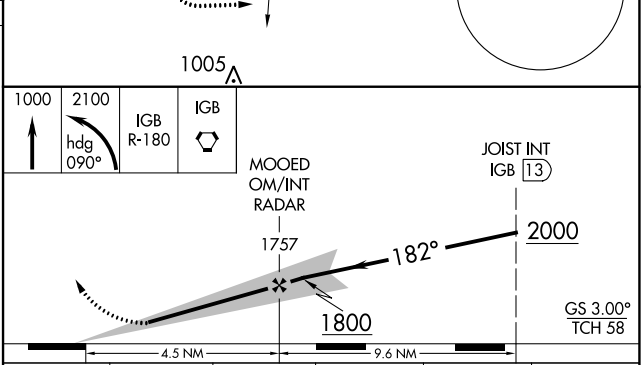
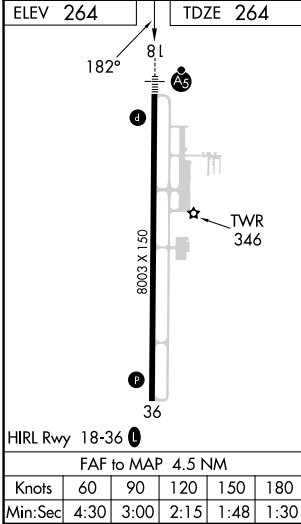
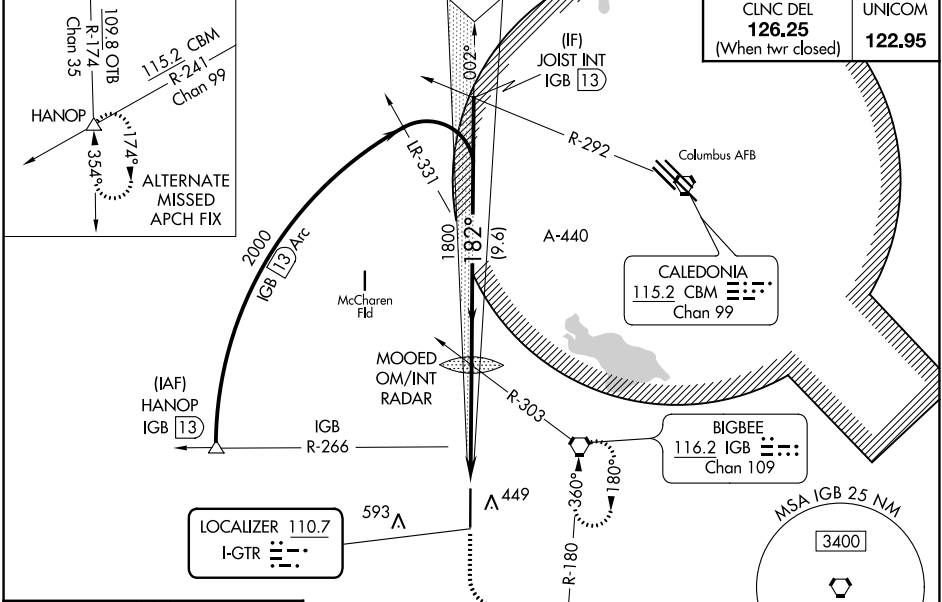
GOLDEN TRIANGLE RGNL (GTR)

**A** For inop ALS, increase S-ILS 18 Cat E visibility to ¾ SM, S-LOC 18 Cat E visibility to 1½ SM.

MALSR 

MISSED APPROACH: Climb to 1000 then climbing left turn to 2100 on heading 090° and on IGB VORTAC R-180 to IGB VORTAC and hold, continue climb-in-hold to 2100.

ATIS <b>126.375</b>	COLUMBUS APP CON * <b>135.6 323.275</b>	GOLDEN TRIANGLE TOWER * <b>118.2 (CTAF) 0 298.875</b>	GND CON <b>135.375 322.475</b>	CLNC DEL <b>135.375 322.475</b>
------------------------	--	--	-----------------------------------	------------------------------------



CATEGORY	A	B	C	D	E
S-ILS 18	464-½ 200 (200-½)				
S-LOC 18	660-½	396 (400-½)	660-⅝ 396 (400-⅝)		
CIRCLING	760-1	496 (500-1)	960-2 696 (700-2)	960-2¼ 696 (700-2¼)	960-2½ 696 (700-2½)

SC-4, 28 NOV 2024 to 26 DEC 2024

SC-4, 28 NOV 2024 to 26 DEC 2024