

WAAS CH <b>99600</b> <b>W36A</b>	APP CRS <b>002°</b>	Rwy Idg <b>8003</b> TDZE <b>261</b> Apt Elev <b>264</b>
--	------------------------	---

# RNAV (GPS) RWY 36

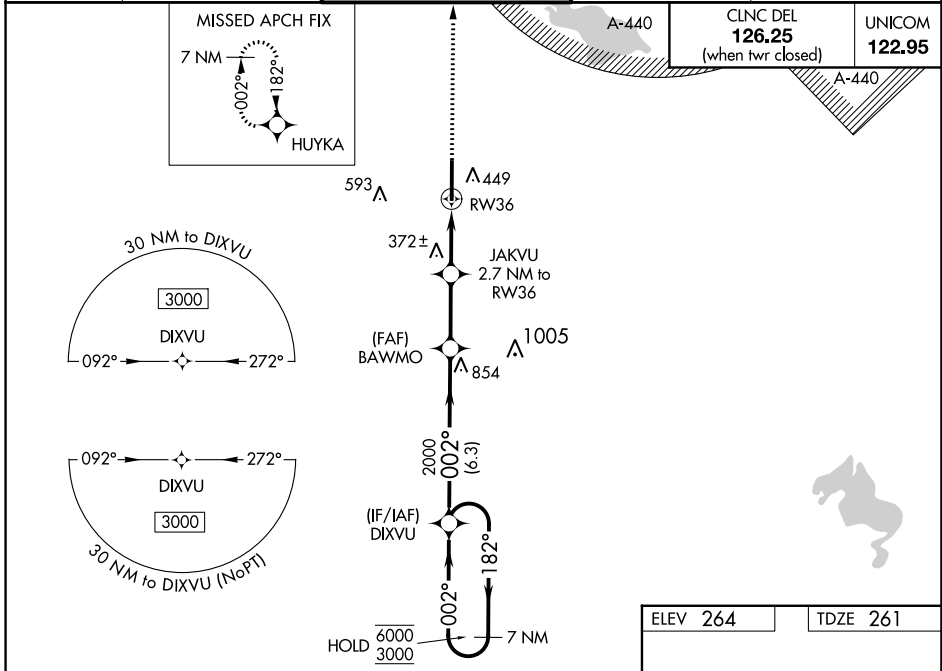
GOLDEN TRIANGLE RGNL (GTR)

**RNP APCH.**

⚠ For uncompensated Baro-VNAV systems, LNAV/VNAV NA below -15°C or above 54°C. When local altimeter setting not received, use Columbus AFB altimeter setting: increase LPV DA to 500 feet, LNAV/VNAV DA to 593 feet and LNAV/VNAV visibility 1/8 SM; increase all MDAs 40 feet. Baro-VNAV and VDP NA when using Columbus AFB altimeter setting.

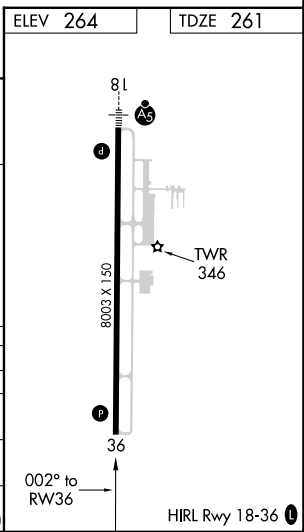
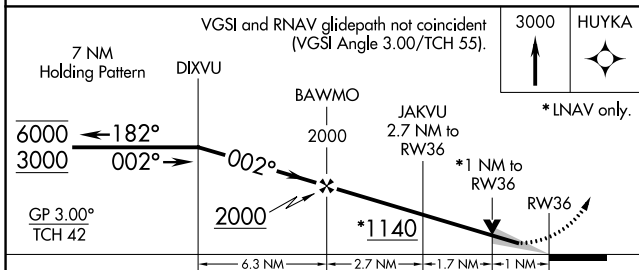
**MISSED APPROACH:**  
Climb to 3000 direct HUYKA and hold.

ATIS <b>126.375</b>	COLUMBUS APP CON * <b>135.6 323.275</b>	GOLDEN TRIANGLE TOWER * <b>118.2 (CTAF) 298.875</b>	GND CON <b>135.375 322.475</b>	CLNC DEL <b>135,375 322,475</b>
------------------------	--	--	-----------------------------------	------------------------------------



SC-4, 28 NOV 2024 to 26 DEC 2024

SC-4, 28 NOV 2024 to 26 DEC 2024



CATEGORY	A	B	C	D	E
LPV DA	461-3/4 200 (200-3/4)				
LNAV/VNAV DA	554-7/8 293 (300-7/8)				
LNAV MDA	640-1 379 (400-1)		640-1 1/8 379 (400-1 1/8)		
<b>C</b> CIRCLING	760-1	496 (500-1)	960-2 696 (700-2)	960-2 1/4 696 (700-2 1/4)	960-2 1/2 696 (700-2 1/2)