

WAAS CH 93635	APP CRS 324°	Rwy Idg 4200
W32A	TDZE 448	
	Apt Elev 455	

RNAV (GPS) RWY 32

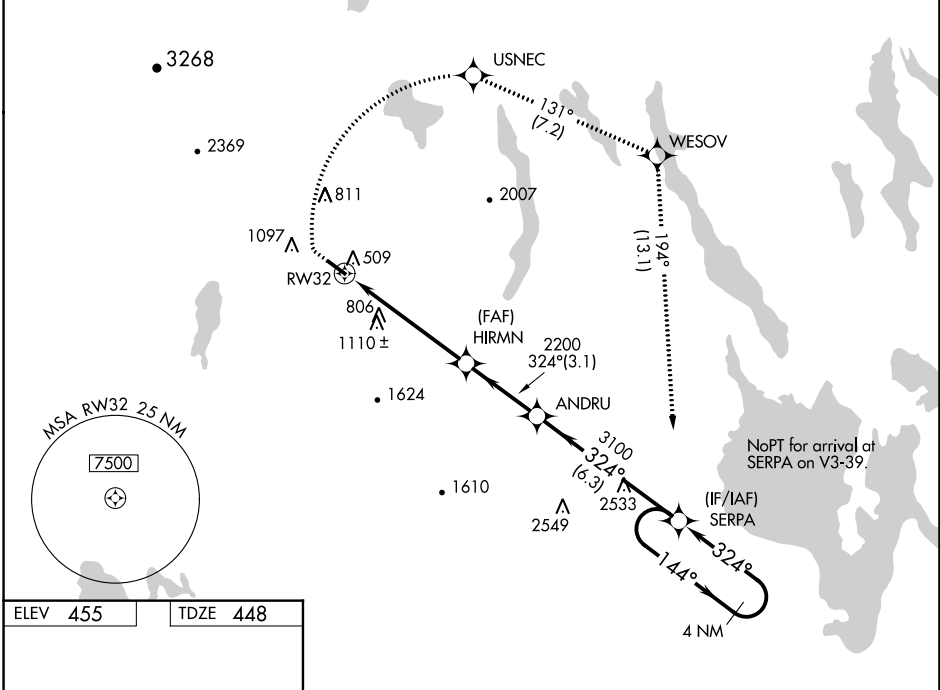
EASTERN SLOPES RGNL (IZG)

RNP APCH.

When local altimeter setting not received, use Auburn/Lewiston altimeter setting and increase all DA to 1005 feet and increase LPV all Cats visibility $\frac{1}{4}$ SM; increase all MDA 100 feet, and increase LNAV Cat B visibility $\frac{1}{4}$ SM and Cat C visibility $\frac{1}{2}$ SM, and increase Circling Cat B visibility $\frac{1}{4}$ SM. Rwy 32 helicopter visibility reduction below $\frac{3}{4}$ SM NA. VDP NA when using Auburn/Lewiston altimeter setting. Circling to Rwy 14 NA at night.

MISSED APPROACH: Climb to 1040 then climbing right turn to 3600 direct USNEC and on track 131° to WESOV and on track 194° to SERPA and hold.

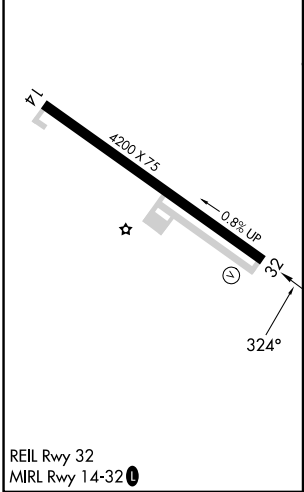
ASOS 135.775	PORTLAND APP CON * 119.75 269.35	UNICOM 122.8 (CTAF)
------------------------	--	-------------------------------



NE-1, 28 NOV 2024 to 26 DEC 2024

NE-1, 28 NOV 2024 to 26 DEC 2024

ELEV 455	TDZE 448
-----------------	-----------------



1040	3600	USNEC	tr 131°	WESOV	tr 194°	SERPA	VGSI and RNAV glidepath not coincident (VGSI Angle 3.00°/TCH 17).
*LNAV only.							SERPA Holding Pattern
RW32		HIRMN 2200	ANDRU 3100	SERPA 3600		GP 3.00° TCH 51	
2.2 NM		3.2 NM	3.1 NM	6.3 NM			
CATEGORY	A	B	C	D			
LPV DA	914-1 $\frac{3}{8}$		466 (500-1 $\frac{3}{8}$)		NA		
LNAV MDA	1140-1		692 (700-1)		1140-2		NA
	885 (900-1 $\frac{1}{4}$)		945 (1000-1 $\frac{1}{4}$)		1560-3		1105 (1200-3)
CIRCLING	1340-1 $\frac{1}{4}$		1400-1 $\frac{1}{4}$		1560-3		

REIL Rwy 32
MIRL Rwy 14-32

FRYEBURG, MAINE
Amdt 1B 30JAN20

43°59'N - 70°57'W

RNAV (GPS) RWY 32

EASTERN SLOPES RGNL (IZG)