

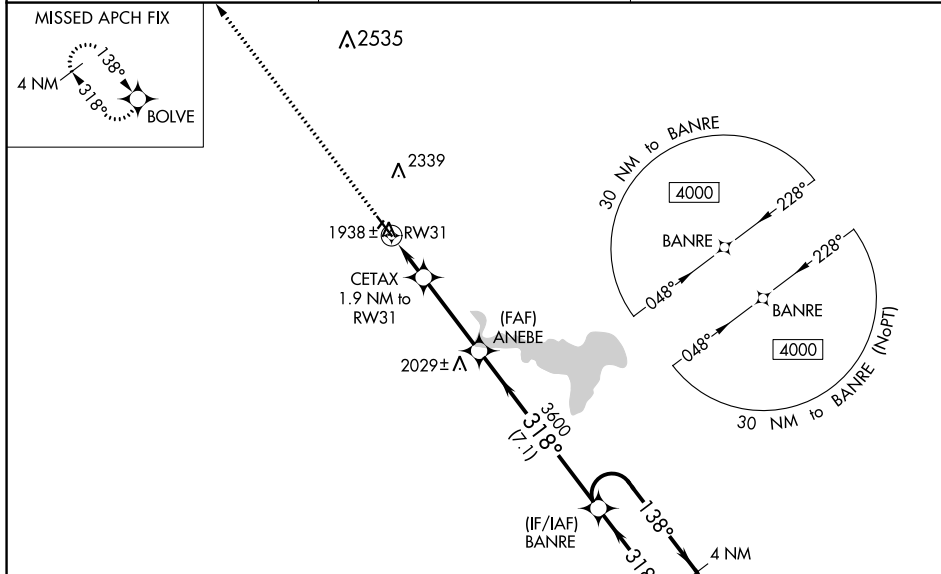
WAAS CH 93638 W31A	APP CRS 318°	Rwy Idg TDZE Apt Elev	5101 1900 1907
--	------------------------	-----------------------------	---

RNAV (GPS) RWY 31

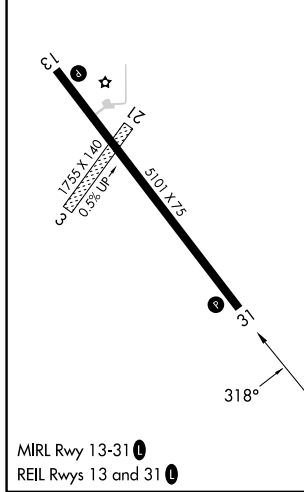
PHILLIPSBURG MUNI (PHG)

RNP APCH - GPS.	<p>⚠ Baro-VNAV NA when using Hays Rgnl altimeter setting. For uncompensated Baro-VNAV systems, LNAV/VNAV NA below -18°C or above 54°C. Circling NA northeast of Rwy 13-31. Rwy 31 helicopter visibility reduction below 1 SM NA. Circling NA to Rws 3 and 21. When local altimeter setting not received, use Hays Rgnl altimeter setting and increase all DA and MDA 140 feet, increase LPV and LNAV/VNAV visibilities ¼ mile all Cats and LNAV and Circling Cat C visibility ¼ mile.</p>	MISSED APPROACH: Climb to 4000 direct BOLVE and hold.
-----------------	--	---

AWOS-3PT 119.125	DENVER CENTER 132.7 226.675	UNICOM 122.8 (CTAF)
----------------------------	---------------------------------------	-------------------------------



ELEV 1907	TDZE 1900
-----------	-----------



4000	BOLVE	VGSI and RNAV glidepath not coincident (VGSI Angle 3.00/TCH 43).		BANRE	4 NM Holding Pattern
		CETAX 1.9 NM to RW31	ANEBE		
		RW31	3600	3600	4000
		1.9	3.3 NM	7.1 NM	
		2540	318°	138°	318°
					GP 3.00° TCH 60
CATEGORY	A	B	C	D	
LPV DA		2150-1	250 (300-1)		NA
LNAV/VNAV DA		2150-1	250 (300-1)		NA
LNAV MDA		2200-1	300 (300-1)		NA
C CIRCLING	2280-1 373 (400-1)	2360-1 453 (500-1)	2380-1½ 473 (500-1½)		NA

NC-2, 28 NOV 2024 to 26 DEC 2024

NC-2, 28 NOV 2024 to 26 DEC 2024