

WAAS CH <b>90316</b> <b>W25A</b>	APP CRS <b>247°</b>	Rwy ldg TDZE Apt Elev	<b>5600</b> <b>765</b> <b>766</b>
--	------------------------	-----------------------------	---

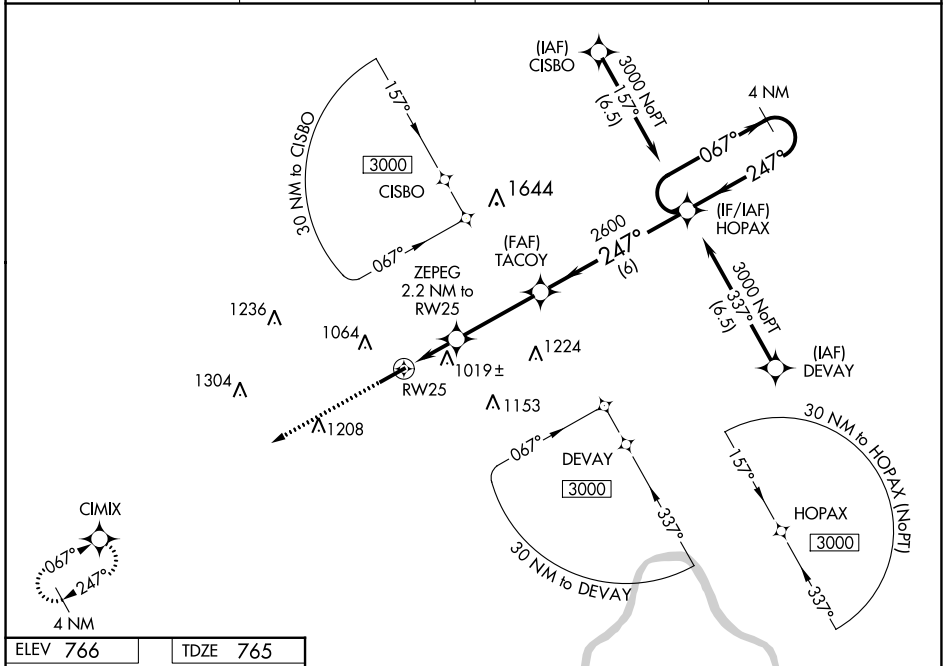
# RNAV (GPS) RWY 25

OHIO UNIVERSITY (UNI)

**⚠** For uncompensated Baro-VNAV systems, LNAV/VNAV NA below -16°C (4°F) or above 54°C (130°F). DME/DME RNP-0.3 NA.

**MISSED APPROACH:**  
Climb to 3000 direct CIMIX and hold.

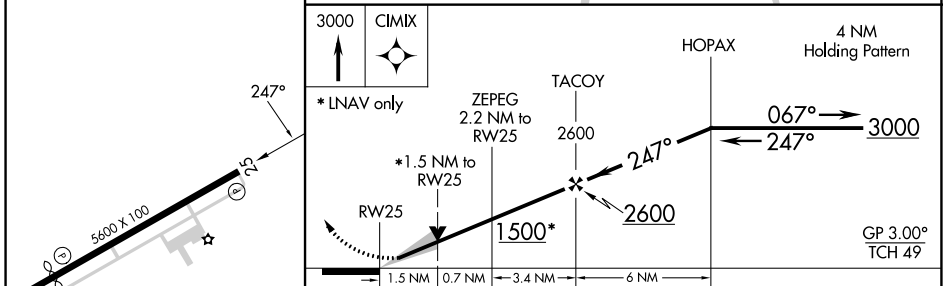
AWOS-3 <b>128.325</b>	HUNTINGTON APP CON <b>120.95 270.1</b>	CLNC DEL <b>120.95</b>	UNICOM <b>123.075 (CTAF) 0</b>
--------------------------	---	---------------------------	-----------------------------------



EC-2, 28 NOV 2024 to 26 DEC 2024

EC-2, 28 NOV 2024 to 26 DEC 2024

ELEV 766	TDZE 765
----------	----------



CATEGORY	A	B	C	D
LPV DA		965- <sup>3</sup> / <sub>4</sub>	200 (200- <sup>3</sup> / <sub>4</sub> )	
LNAV/VNAV DA		1356-2	591 (600-2)	
LNAV MDA	1280-1	515 (600-1)	1280-1 <sup>3</sup> / <sub>8</sub>	515 (600-1 <sup>3</sup> / <sub>8</sub> )
<b>C</b> CIRCLING	1380-1	614 (700-1)	1420-1 <sup>3</sup> / <sub>4</sub> 654 (700-1 <sup>3</sup> / <sub>4</sub> )	1480-2 <sup>1</sup> / <sub>4</sub> 714 (800-2 <sup>1</sup> / <sub>4</sub> )

MIRL Rwy 7-25 0  
REL Rws 7 and 25 0