

# RNAV (GPS) RWY 4

TAOS RGNL (SKX)

|                        |                             |   |
|------------------------|-----------------------------|---|
| APP CRS<br><b>045°</b> | Rwy Idg<br>TDZE<br>Apt Elev | <b>5504</b><br><b>7070</b><br><b>7095</b> |
|------------------------|-----------------------------|---|

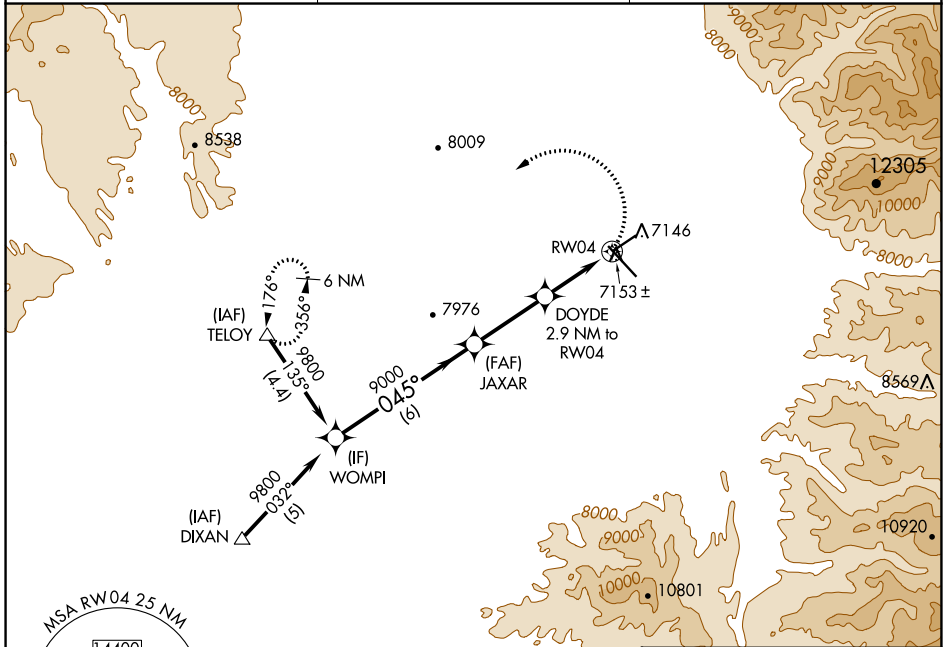
**▼** DME/DME RNP-0.3 NA  
If local altimeter setting not received, procedure NA.

MISSED APPROACH: Climbing left turn to 11000 direct TELOY and hold.

AWOS-3PT  
**132.975**

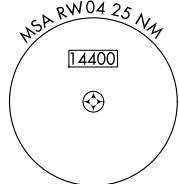
ALBUQUERQUE CENTER  
**132.8 346.35**

UNICOM  
**122.8 (CTAF) 0**

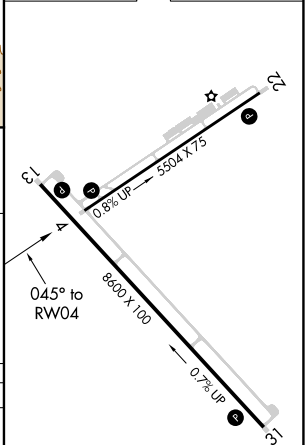
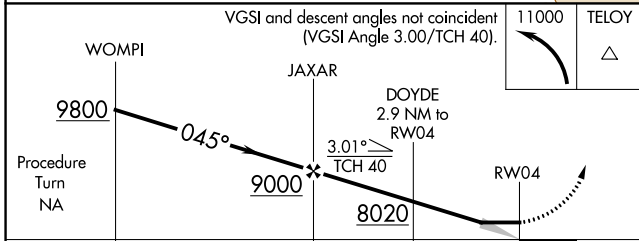


SW-1, 28 NOV 2024 to 26 DEC 2024

SW-1, 28 NOV 2024 to 26 DEC 2024



ELEV 7095 | TDZE 7070



|                      |                       |                       |                         |                          |       |
|----------------------|-----------------------|-----------------------|-------------------------|--------------------------|-------|
| Procedure Turn<br>NA | WOMPI                 |                       | JAXAR                   | DOYDE<br>2.9 NM to RWY 4 | TELOY |
|                      | 9800                  |                       | 9000                    | 8020                     | 11000 |
|                      | 6 NM                  |                       | 3.1 NM                  | 2.9 NM                   |       |
| CATEGORY             | A                     | B                     | C                       | D                        |       |
| LNAV MDA             | 7480-1                | 412 (400-1)           | 7480-1¼                 | 412 (400-1¼)             |       |
| CIRCLING             | 7600-1<br>505 (600-1) | 7640-1<br>545 (600-1) | 7920-2½<br>825 (900-2½) | 8020-3<br>925 (1000-3)   |       |

REIL Rwy 4, 13 and 31  
MIRL Rwy 4-22 and 13-31