

DALLAS THREE DEPARTURE  
(DALL3.TTT) 25ANZ4

DENTON, TEXAS  
DENTON ENTERPRISE (DTON)

LONE STAR DEP CON  
118.1 306.95  
CLNC DEL  
123.95  
GND CON  
123.95  
DENTON TOWER\*  
119.95 (CTAF)

RADAR and DME required.

TAKEOFF MINIMUMS  
Rwys 18L/R, 36L/R: Standard.

TOP ALTITUDE:  
ASSIGNED BY ATC

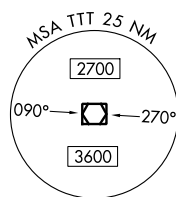
BONHAM  
114.6 BYP  
Chan 93

MAVERICK  
113.1 TTT  
Chan 78

GREGG COUNTY  
112.9 GGG  
Chan 76

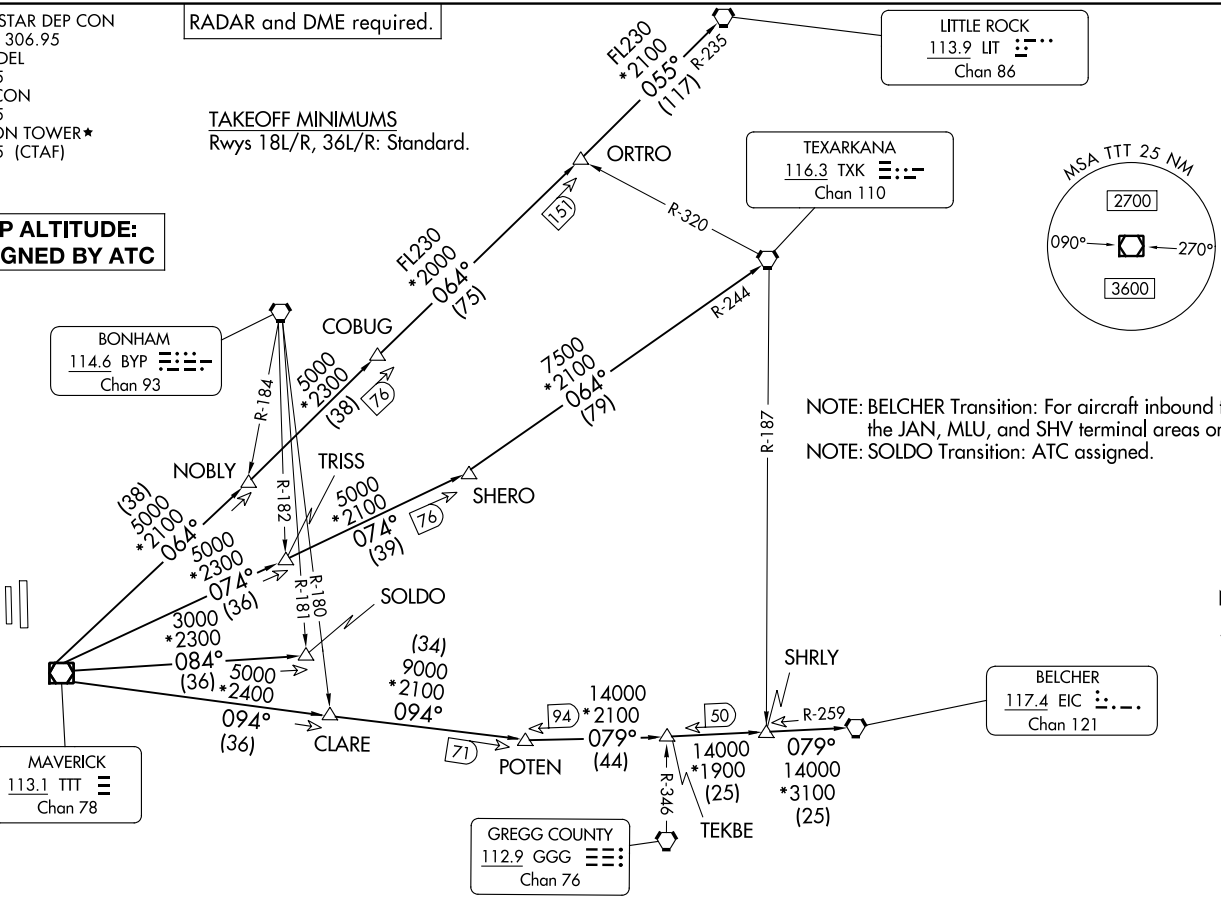
TEXARKANA  
116.3 TXK  
Chan 110

LITTLE ROCK  
113.9 LIT  
Chan 86



NOTE: BELCHER Transition: For aircraft inbound to the JAN, MLU, and SHV terminal areas only.  
NOTE: SOLDO Transition: ATC assigned.

BELCHER  
117.4 EIC  
Chan 121



(CONTINUED ON FOLLOWING PAGE)

NOTE: Chart not to scale.

DALLAS THREE DEPARTURE  
(DALL3.TTT) 24305

AI-5866 (FAA)

DENTON ENTERPRISE (DTON)  
DENTON, TEXAS

# DALLAS THREE DEPARTURE

DENTON, TEXAS



## DEPARTURE ROUTE DESCRIPTION

When entering controlled airspace, fly assigned heading for RADAR vectors to appropriate route. Maintain ATC assigned altitude.

BELCHER TRANSITION (DALL3.EIC): From over TTT VOR/DME on TTT R-094 to POTEN, then on EIC R-259 to EIC VORTAC.

LITTLE ROCK TRANSITION (DALL3.LIT): From over TTT VOR/DME on TTT R-064 to ORTRO, then on LIT R-235 to LIT VORTAC.

SOLDO TRANSITION (DALL3.SOLDO): From over TTT VOR/DME on TTT R-084 to SOLDO.

TEXARKANA TRANSITION (DALL3.TXK): From over TTT VOR/DME on TTT R-074 to SHERO, then on TXK R-244 to TXK VORTAC.

SC-2, 28 NOV 2024 to 26 DEC 2024

SC-2, 28 NOV 2024 to 26 DEC 2024