

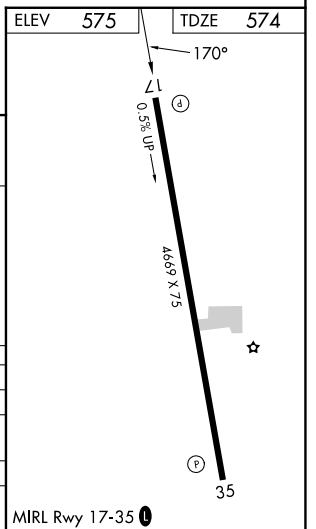
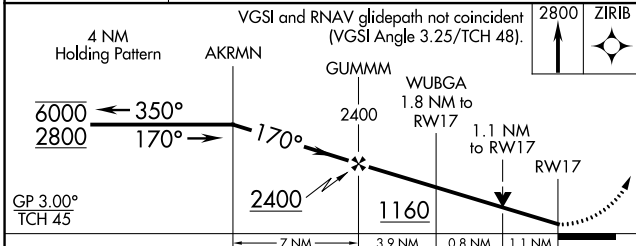
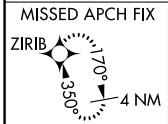
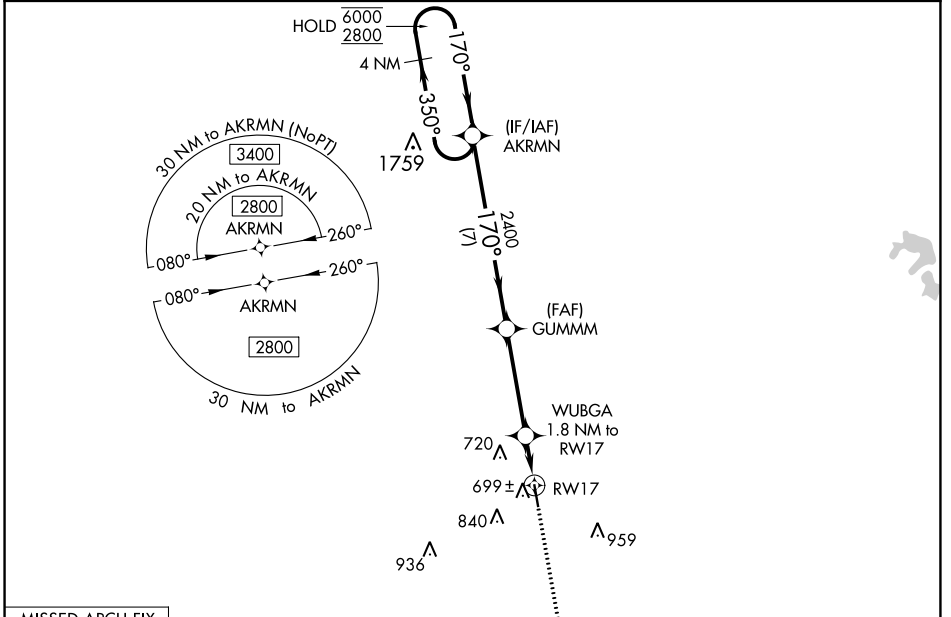
WAAS CH 70336 W17A	APP CRS 170°	Rwy Idg TDZE Apt Elev	4669 574 575
--	------------------------	-----------------------------	---

RNAV (GPS) RWY 17

LOUISVILLE/WINSTON COUNTY (LMS)

RNP APCH - GPS.	<p>▽ Rwy 17 helicopter visibility reduction below 3/4 SM NA. ▲ For uncompensated Baro-VNAV systems, LNAV/VNAV NA below -16°C or above 54°C.</p>	MISSED APPROACH: Climb to 2800 direct ZIRIB and hold.
-----------------	---	--

AWOS-3PT 118.325	MEMPHIS CENTER 132.75 263.0	UNICOM 122.7 (CTAF) 0
----------------------------	---------------------------------------	---------------------------------



CATEGORY	A	B	C	D
LPV DA		824-1	250 (300-1)	
LNAV/VNAV DA		880-1	306 (400-1)	
LNAV MDA	960-1	386 (400-1)	960-1 1/8	386 (400-1 1/8)
C CIRCLING	1020-1 445 (500-1)	1260-1 685 (700-1)	1260-2 685 (700-2)	1260-2 1/4 685 (700-2 1/4)

MIRL Rwy 17-35 0