

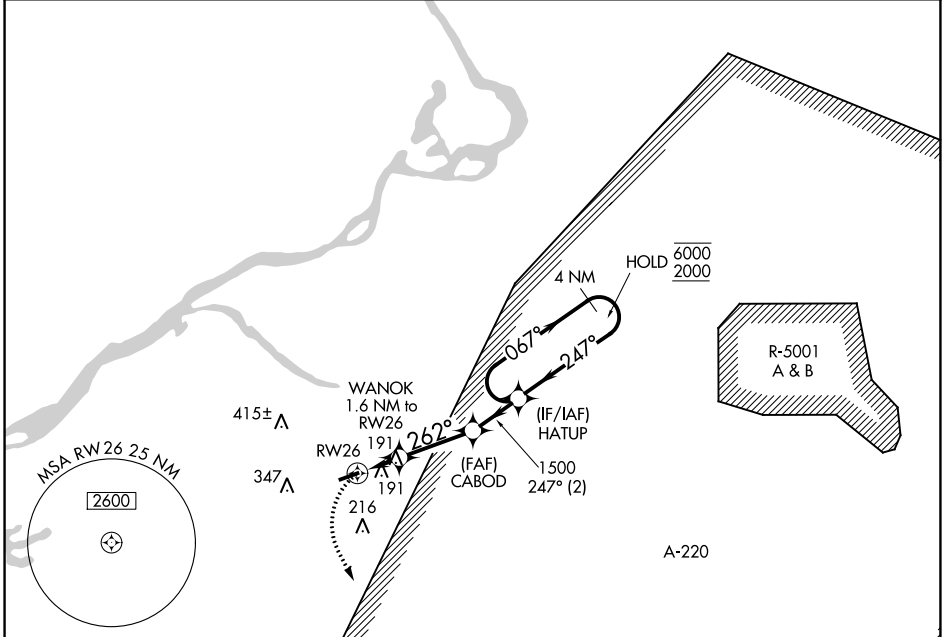
APP CRS	Rwy Idg	<b>3881</b>
<b>262°</b>	TDZE	<b>53</b>
	Apt Elev	<b>53</b>

# RNAV (GPS) RWY 26

SOUTH JERSEY RGNL (VAY)

RNP APCH.		MISSED APPROACH: Climbing left turn to 2000 direct INNEZ and hold.	
Rwy 26 helicopter visibility reduction below 1 SM NA. Procedure NA at night.			

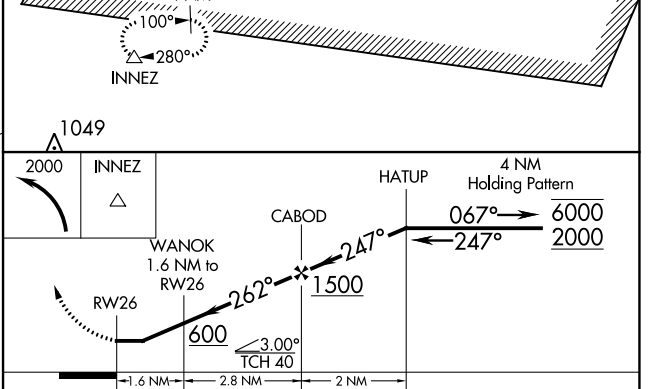
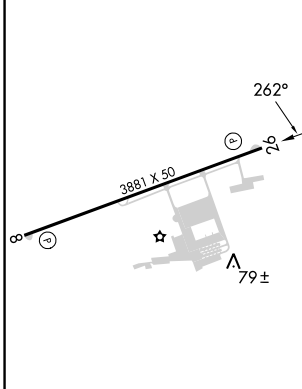
ASOS	MC GUIRE APP CON	UNICOM	<b>123.3</b>
<b>119.325</b>	<b>126.475 363.8</b>	<b>122.8 (CTAF)</b>	



NE-2, 28 NOV 2024 to 26 DEC 2024

NE-2, 28 NOV 2024 to 26 DEC 2024

ELEV 53	TDZE 53
---------	---------



MIRL Rwy 8-26			
REIL Rwy 8 and 26			
CATEGORY	A	B	C D
LNAV MDA	480-1	427 (500-1)	NA
CIRCLING	520-1	540-1	NA
	467 (500-1)	487 (500-1)	