

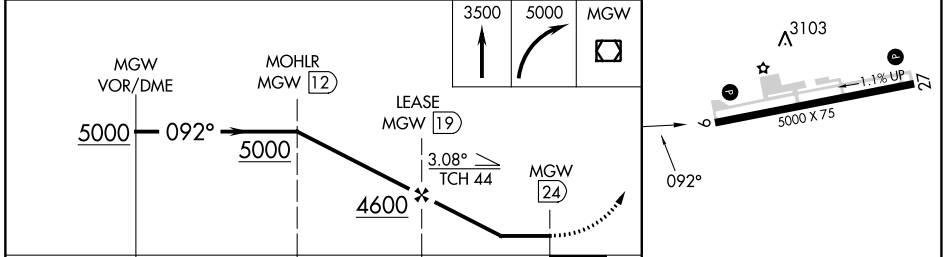
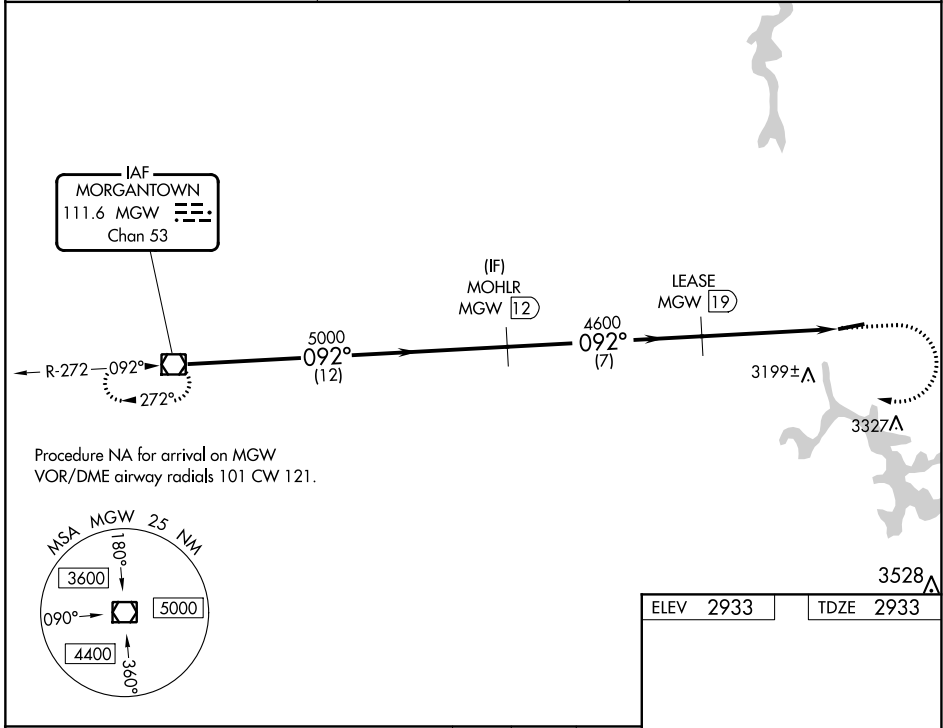
| | | |
|---|------------------------|--|
| VOR/DME MGW 111.6 Chan 53 | APP CRS 092° | Rwy Idg TDZE Apt Elev 5000 2933 2933 |
|---|------------------------|--|

VOR RWY 9

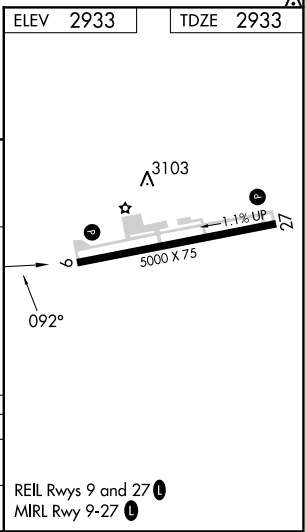
GARRETT COUNTY (2G4)

| | |
|--|--|
| DME required. | MISSED APPROACH: Climb to 3500 then climbing right turn to 5000 direct MGW VOR/DME and hold. |
| <p>T Rwy 09 helicopter visibility reduction below $\frac{3}{4}$ SM NA. When local altimeter setting not received, use Morgantown altimeter setting and increase all MDA 300 feet; increase S-09 Cat B and Circling Cat A and B visibility $\frac{1}{4}$ SM and S-09 and Circling Cat C visibility 1 SM.</p> | |

| | | |
|--------------------------|---|---------------------------------|
| AWOS-3 120.125 | CLARKSBURG APP CON * 119,425 284,65 | UNICOM 123.0 (CTAF) 0 |
|--------------------------|---|---------------------------------|



| CATEGORY | A | B | C | D |
|-------------------|--------|-------------|-------------------------|----|
| S-09 | 3460-1 | 527 (600-1) | 3460-1½ 527 (600-1½) | NA |
| C CIRCLING | 3460-1 | 527 (600-1) | 3500-1½ 567 (600-1½) | NA |



NE-3, 28 NOV 2024 to 26 DEC 2024

NE-3, 28 NOV 2024 to 26 DEC 2024