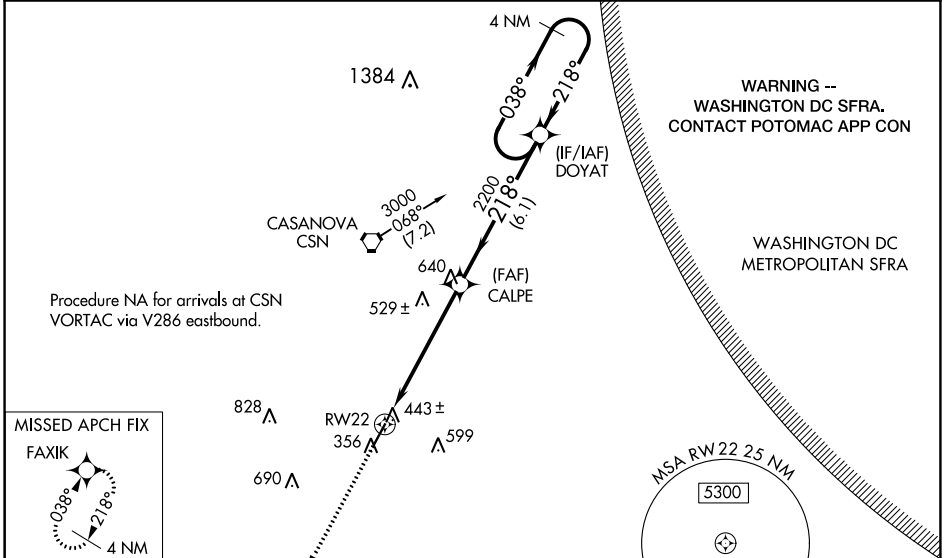


WAAS CH 56306 W22A	APP CRS 218°	Rwy Idg TDZE 315 Apt Elev 316	5000 315 316
--	------------------------	---	---

RNAV (GPS) RWY 22

CULPEPER RGNL (CJR)

RNP APCH.			MISSED APPROACH: Climb to 3000 direct FAXIK and hold.
<p>⚠ When VGSI inoperative, procedure NA at night. Baro-VNAV NA when using Washington Dulles Intl altimeter setting. For uncompensated Baro-VNAV systems, LNAV/VNAV NA below -15°C or above 48°C. Rwy 22 helicopter visibility reduction below 1 SM NA. When local altimeter setting not received, use Washington Dulles Intl altimeter setting and increase all DAs/MDAs 80 feet, LPV and LNAV/VNAV all Cats visibility ¼ mile, LNAV Cats C and D visibility ¼ mile.</p>			
AWOS-3 119.325	POTOMAC APP CON 128.525 306.925	CLNC DEL 121.6	UNICOM 123.075 (CTAF) 📞



NE-3, 28 NOV 2024 to 26 DEC 2024

NE-3, 28 NOV 2024 to 26 DEC 2024

ELEV 316	TDZE 315	MISSED APCH FIX FAXIK																									
<table border="1"> <tr> <td>CATEGORY</td> <td>A</td> <td>B</td> <td>C</td> <td>D</td> </tr> <tr> <td>LPV DA</td> <td colspan="2">657-1¼</td> <td colspan="2">342 (400-1¼)</td> </tr> <tr> <td>LNAV/VNAV DA</td> <td colspan="2">703-1½</td> <td colspan="2">388 (400-1½)</td> </tr> <tr> <td>LNAV MDA</td> <td>800-1</td> <td>485 (500-1)</td> <td>800-1¼</td> <td>800-1½</td> </tr> <tr> <td></td> <td></td> <td></td> <td>485 (500-1¼)</td> <td>485 (500-1½)</td> </tr> </table>		CATEGORY	A	B	C	D	LPV DA	657-1¼		342 (400-1¼)		LNAV/VNAV DA	703-1½		388 (400-1½)		LNAV MDA	800-1	485 (500-1)	800-1¼	800-1½				485 (500-1¼)	485 (500-1½)	<p>REIL Rwy 4 and 22 📞</p> <p>MIRL Rwy 4-22 📞</p>
CATEGORY	A	B	C	D																							
LPV DA	657-1¼		342 (400-1¼)																								
LNAV/VNAV DA	703-1½		388 (400-1½)																								
LNAV MDA	800-1	485 (500-1)	800-1¼	800-1½																							
			485 (500-1¼)	485 (500-1½)																							