

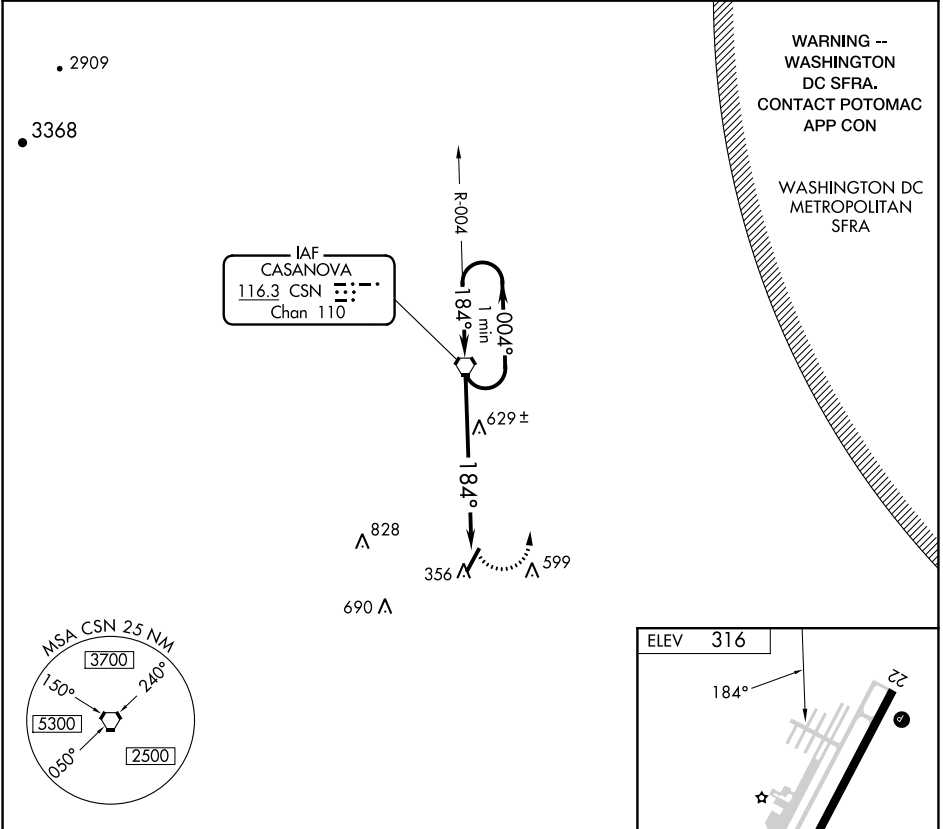
VORTAC CSN <b>116.3</b> Chan <b>110</b>	APP CRS <b>184°</b>	Rwy Idg TDZE Apt Elev	<b>N/A</b> <b>N/A</b> <b>316</b>
---	------------------------	-----------------------------	--

**VOR-A**  
CULPEPER RGNL (CJR)

**⚠** When VGSI inoperative, procedure NA at night. Visibility reduction by Helicopters NA. When local altimeter setting not received, use Washington Dulles Intl altimeter setting and increase all DAs/MDAs 80 feet, Circling Cats C and D visibility ¼ mile.

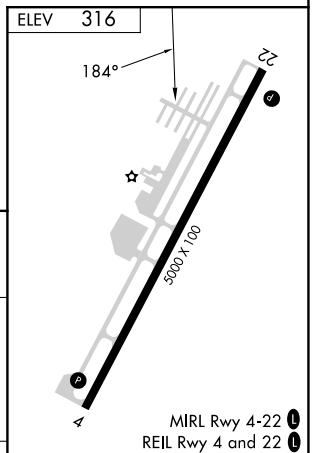
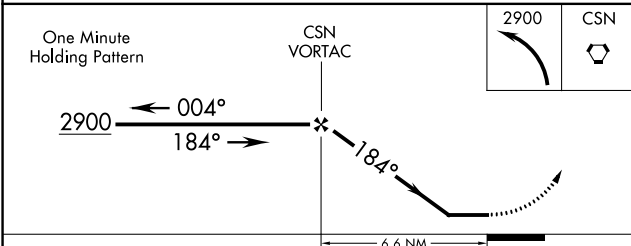
MISSED APPROACH: Climbing left turn to 2900 direct CSN VORTAC and hold.

AWOS-3 <b>119.325</b>	POTOMAC APP CON <b>128.525 306.925</b>	CLNC DEL <b>121.6</b>	UNICOM <b>123.075 (CTAF)</b> <b>Ⓛ</b>
--------------------------	---	--------------------------	--



NE-3, 28 NOV 2024 to 26 DEC 2024

NE-3, 28 NOV 2024 to 26 DEC 2024



CATEGORY	A	B	C	D	FAF to MAP 6.6 NM					
	920-1 604 (700-1)	960-1 644 (700-1)	960-1 ¾ 644 (700-1¾)	1100-2 ½ 784 (800-2½)	Knots	60	90	120	150	180
CIRCLING					Min:Sec	6:36	4:24	3:18	2:38	2:12