


WAAS CH 49009 W05A	APP CRS 052°	Rwy Idg TDZE Apt Elev	7100 89 93
--	------------------------	-----------------------------	---------------------------------------

RNAV (GPS) RWY 5

ALBERT J ELLIS (O.A.J)

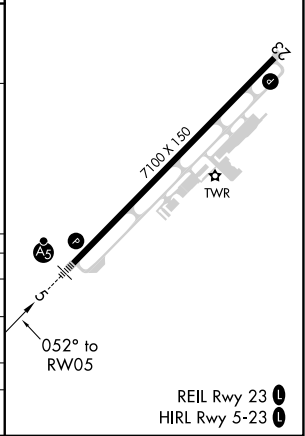
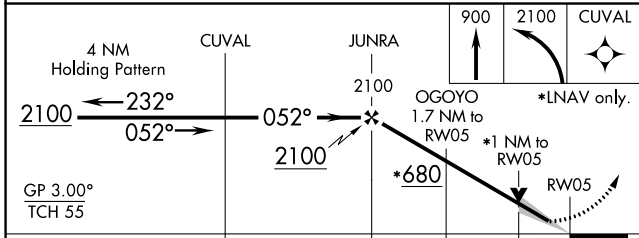
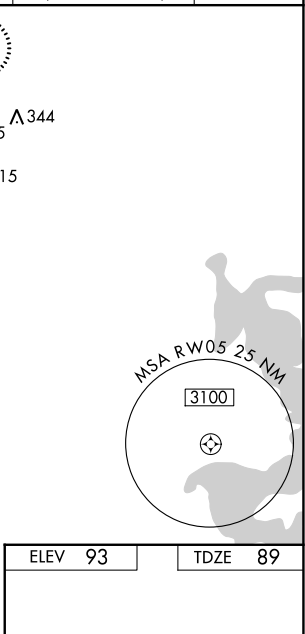
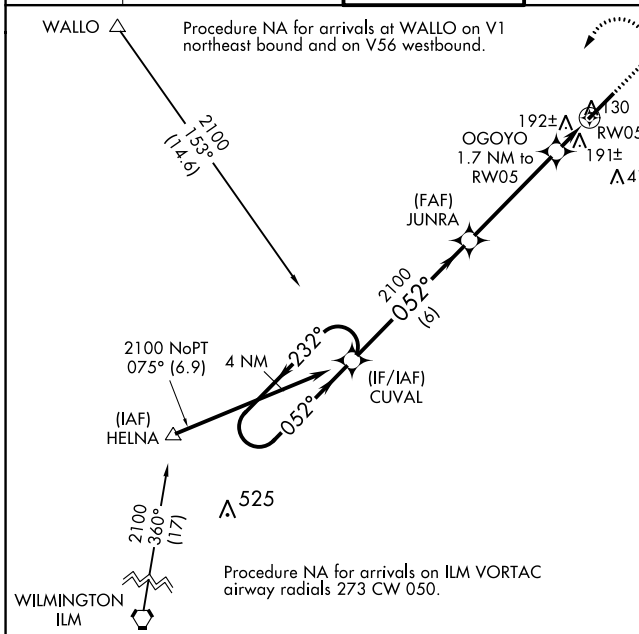
Baro-VNAV NA when using Wilmington altimeter setting. For uncompensated Baro-VNAV systems, LNAV/VNAV NA below -1.5°C (5°F) or above 43°C (109°F). DME/DME RNP -0.3 NA. VDP NA with Wilmington altimeter setting. When local altimeter setting not received, use Wilmington altimeter setting and increase LPV DA to 383 feet; increase LNAV/VNAV DA to 559 feet and all visibilities 3/8 SM. Increase all MDAs 100 feet and LNAV visibility Cat C/D 3/8 SM, and Circling visibility Cat C/D 1/4 SM. For inoperative MALSR, increase LNAV Cat C/D visibility to 1 mile. For inoperative MALSR, when using Wilmington altimeter setting, increase LPV all Cats visibility to 3/8 mile, increase LNAV/VNAV all Cats to 1/2 mile, and LNAV Cat C/D to 1/8 mile.

MALSR



MISSED APPROACH:
Climb to 900 then climbing left turn to 2100 direct CUVAL and hold.

ATIS 124.475	WILMINGTON APP CON ★ 135.75 317.425	ELLIS TOWER ★ 132.65 (CTAF)	GND CON 125.4	CLNC DEL 121.4 257.6 (when twr closed)	UNICOM 122.95
------------------------	---	---------------------------------------	-------------------------	---	-------------------------



CATEGORY	A		B		C		D	
LPV DA	289-1/2		200 (200-1/2)					
LNAV/VNAV DA	465-3/4		376 (400-3/4)					
LNAV MDA	460-1/2	371 (400-1/2)	460-5/8	371 (400-5/8)				
CIRCLING	540-1 447 (500-1)	560-1 467 (500-1)	720-1 3/4 627 (700-1 3/4)	720-2 627 (700-2)				

SE-2, 28 NOV 2024 to 26 DEC 2024

SE-2, 28 NOV 2024 to 26 DEC 2024