

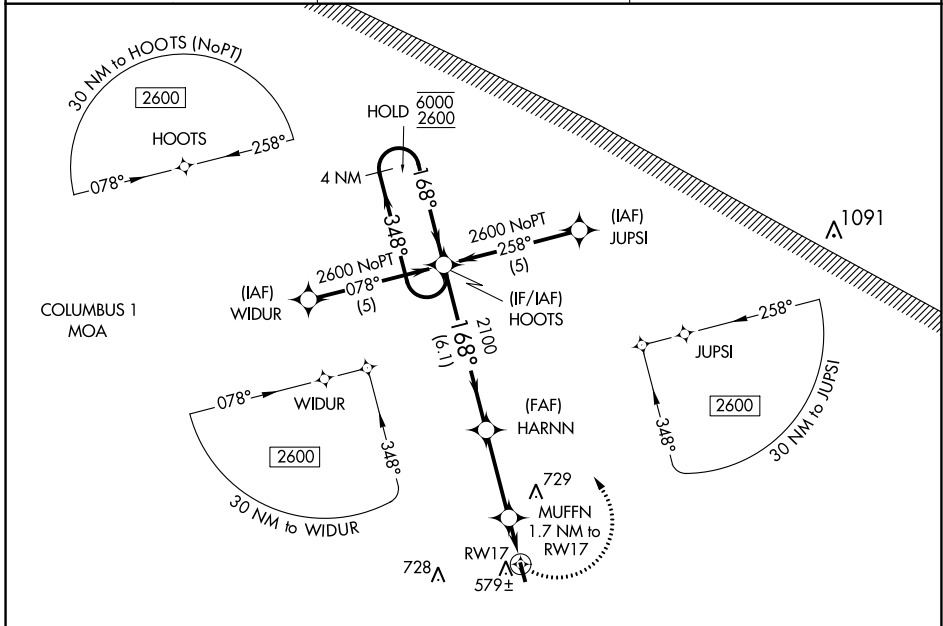
APP CRS	Rwy Idg	3613
168°	TDZE	463
	Apt Elev	463

RNAV (GPS) RWY 17

LAMAR COUNTY (M55)

RNP APCH.	MISSED APPROACH: Climbing left turn to 2600 direct HOOTs and hold.
<p>▼ Rwy 17 helicopter visibility reduction below 1 SM NA. Use Columbus AFB altimeter setting. Procedure NA at night.</p> <p>▲ NA</p>	

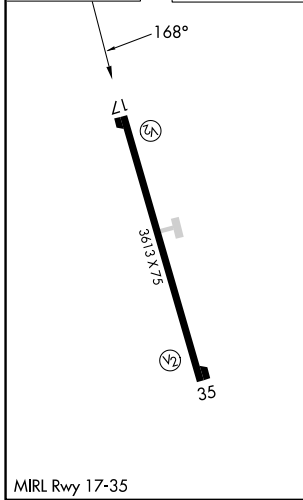
KCBM ATIS* 115.2 273.5	COLUMBUS APP CON* 126.075 239.25	CTAF 122.9
----------------------------------	--	----------------------



SE-4, 28 NOV 2024 to 26 DEC 2024

SE-4, 28 NOV 2024 to 26 DEC 2024

ELEV 463	TDZE 463
-----------------	-----------------



4 NM Holding Pattern				2600	HOOTs
				6.1 NM	3.3 NM
				1.7 NM	
CATEGORY	A	B	C	D	
LNAV MDA	960-1	497 (500-1)	960-1 $\frac{3}{8}$ 497 (500-1 $\frac{3}{8}$)	960-1 $\frac{1}{2}$ 497 (500-1 $\frac{1}{2}$)	
CIRCLING	1100-1	637 (700-1)	1180-2 717 (800-2)	1180-2 $\frac{1}{4}$ 717 (800-2 $\frac{1}{4}$)	