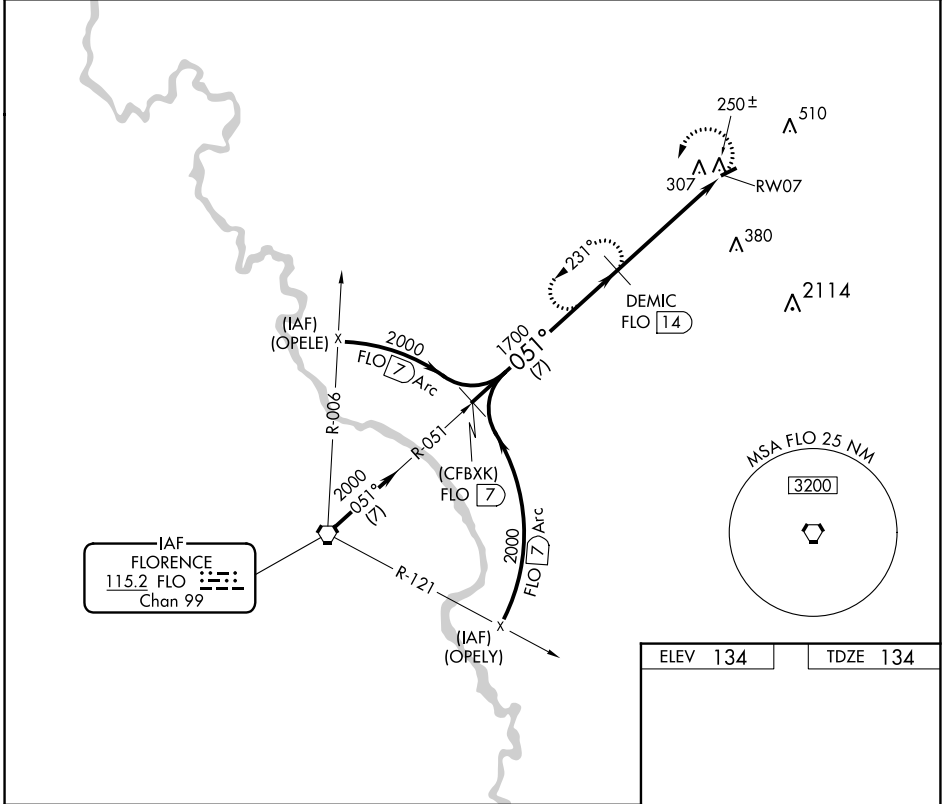


VORTAC FLO <b>115.2</b> Chan <b>99</b>	APP CRS <b>051°</b>	Rwy Idg <b>3000</b> TDZE <b>134</b> Apt Elev <b>134</b>
--	------------------------	---

# VOR/DME or GPS RWY 7

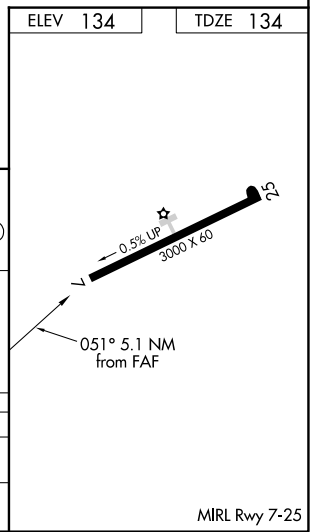
DILLON COUNTY (DLC)

<p>▼ ▲NA</p> <p>Use Florence altimeter setting.</p>	<p>MISSED APPROACH: Climbing left turn to 2000 via FLO R-051 to DEMIC 14 DME and hold.</p>
<p>FLORENCE APP CON ★</p> <p><b>118.6 341.7</b></p>	<p>CTAF</p> <p><b>122.9</b></p>



SE-2, 28 NOV 2024 to 26 DEC 2024

SE-2, 28 NOV 2024 to 26 DEC 2024



Procedure Turn NA	(CFBXK) FLO 7	2000	051°	1700	DEMIC FLO 14	2000	FLO R-051	DEMIC FLO 14
	7 NM		5.1 NM					
CATEGORY	A	B	C	D				
S-7	660-1	526 (600-1)	660-1½ 526 (600-1½)	NA				
CIRCLING	700-1	566 (600-1)	700-1½ 566 (600-1½)	NA				