

APP CRS	Rwy Idg	N/A
020°	TDZE	N/A
	Apt Elev	11

RNAV (GPS)-B

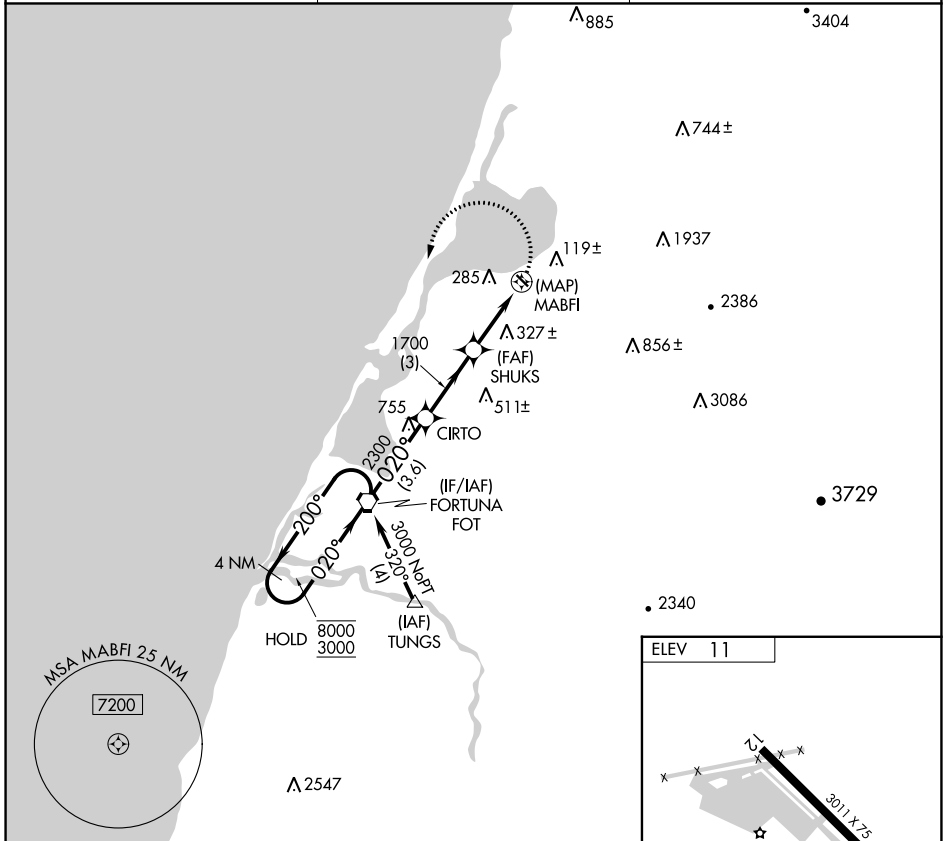
MURRAY FLD (EKA)

RNP APCH-GPS.

Procedure NA at night. Use Arcata altimeter setting when not received, use Crescent City altimeter setting and increase all MDA 100 feet. Circling Cat C NA when using Crescent City altimeter. Rwy 12, 30 helicopter visibility reduction below 1 SM NA.

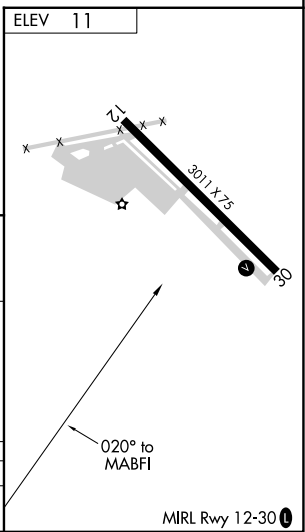
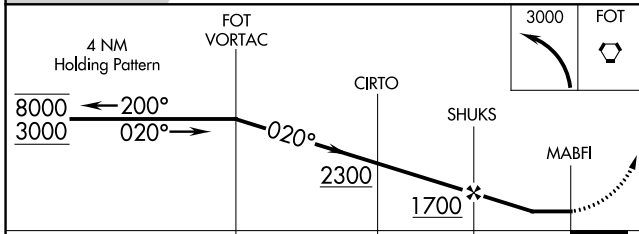
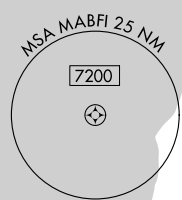
MISSED APPROACH: Climbing left turn to 3000 direct FOT VORTAC and hold.

ACV ASOS 118.525	SEATTLE CENTER 124.85 306.3	UNICOM 122.7 (CTAF)
----------------------------	---------------------------------------	-------------------------------



SW-2, 28 NOV 2024 to 26 DEC 2024

SW-2, 28 NOV 2024 to 26 DEC 2024



CATEGORY	A	B	C	D
CIRCLING	980-1¼ 969 (1000-1¼)	1220-1½ 1209 (1300-1½)	1640-3 1629 (1700-3)	NA

MIRL Rwy 12-30